



IKA®

Product Overview



designed
to work perfectly





Welcome to the IKA® group

IKA®-Werke GmbH & Co. KG in Staufen, Germany can now look back on a century of history.

The company, which was founded in 1910 as a distributor for pharmacies and hospitals, relocated from bombed-out Cologne to Staufen in 1942. There it quickly became the global market leader for laboratory technology as well as dispersing, stirring, and kneading instruments. Today, IKA® employs over 800 people at eight different locations on four continents.

IKA® laboratory technology offers a vast spectrum of innovative devices for numerous applications in research and development. For mixing, tempering, distilling or crushing, market leaders in varying fields of application rely on IKA®'s innovative and proven technology.

For more information, please visit:
www.ika.com

The cover of this brochure is a collection of images of our IKAworldwide instagram followers. We would like to say Thank You to all of them.



[IKAworldwide](#) | [#lookattheblue](#)

Mixing

Magnetic Stirrers	Page 4
Overhead Stirrers	Page 28
Shakers	Page 42

Crushing

Dispersers	Page 62
Mills	Page 86

Heating / Tempering

Dry Block Heaters	Page 98
Hotplates	Page 104
Temperature control	Page 108

Separation

Centrifuge	Page 118
Rotary Evaporators	Page 120

Laboratory Reactors

Packages	Page 134
----------	----------

Analytical Technology

Calorimeters	Page 148
--------------	----------

Software

labworldsoft®	Page 144
CalWin	Page 144

Packages	Page 158
----------	----------





Mixing

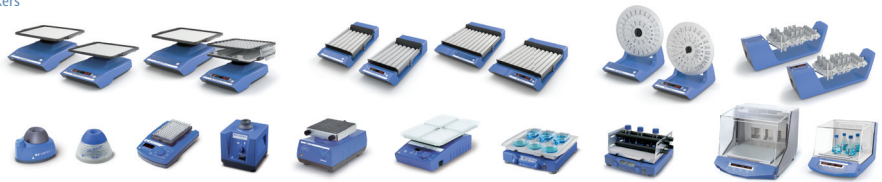
Magnetic Stirrers



Overhead Stirrers



Shakers



Crushing

Dispersers



Mills



Heating / Tempering

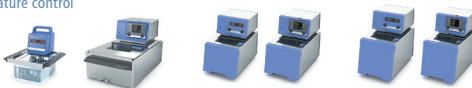
Dry Block Heaters



Hotplates



Temperature control



Separation

Centrifuge



Rotary Evaporators



Laboratory Reactors



Analytical Technology

Calorimeters



Software

labworldsoft® / CalWin



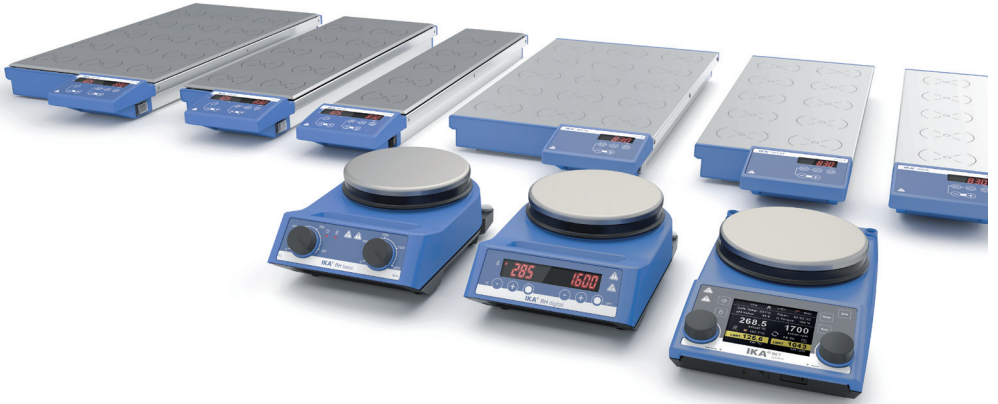


Magnetic stirrers



IKA® magnetic stirrers are made for Scientists. When a product is developed, the engineers focus on safety, power and intelligence. There is a complete range of magnetic stirrers to handle various tasks, applications and quantities, either with or without heating capabilities and with open or closed vessels. IKA® stirrers require up to 25% less energy than other manufacturer's products.

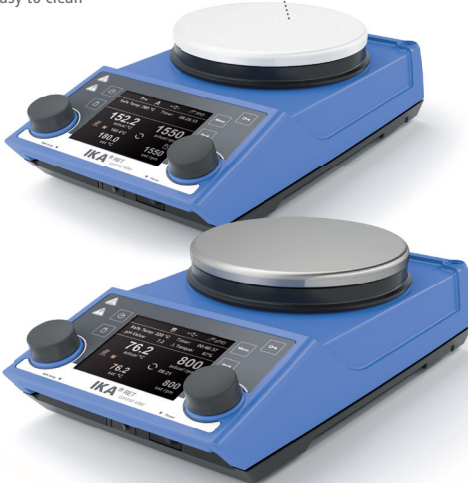




Patented

RET® control-visc with white coated heating plate!

- > Offers excellent chemical resistance
- > Easy to clean



RET® control-visc



Integrated temperature sensor for precise temperature control



Integrated weighing function allows the user to measure weight changes of up to 5,000 g



Torque trend measurement Viscosity changes in the medium can be measured by using a torque measurement device. The results can be depicted on the display



RS 232 interface for PC connection



USB interface to control and document all parameters using labworldsoft® software and for updating your firmware



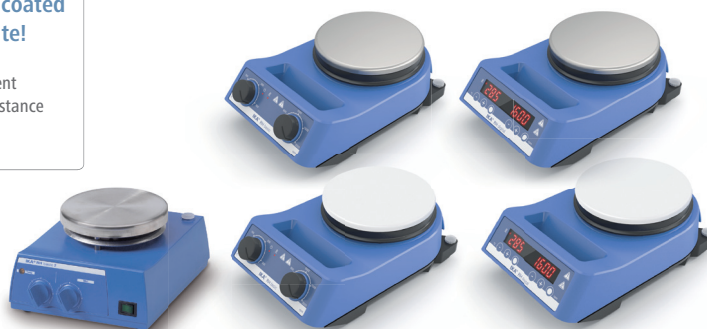


Magnetic stirrers with heating



RH basic / digital with white coated heating plate!

- > Offers excellent chemical resistance
- > Easy to clean




Technical data	RH basic 2	RH basic RH basic white	RH digital RH digital white
Max. stirring quantity (H ₂ O)	10 l	15 l	15 l
Motor rating input / output	15 / 2 W	20 / 2 W	20 / 2 W
Speed range	100 – 2000 rpm	100 – 2000 rpm	100 – 2000 rpm
Speed display	scale (0 – 6)	scale	LED
Heat output	400 W	600 W	600 W
Temperature range	RT – 320 °C	50 – 320 °C	50 – 320 °C
Max. magnetic bar (L x Ø)	–	80 mm	80 mm
Safety circuit	400 °C	100 – 360 °C	100 – 360 °C
Control accuracy with sensor	–	ETS-D5: ± 0.5 K ETS-D6: ± 0.2 K	ETS-D5: ± 0.5 K ETS-D6: ± 0.2 K
Heating plate material	stainless steel (1.4301)	stainless steel 1.4301 white ceramic	stainless steel 1.4301 white ceramic
Dimensions	Ø 125 mm	Ø 135 mm	Ø 135 mm
Weight	2.4 kg	2.8 kg	2.8 kg
	Ident. No. 3339000	Ident. No. 5019700 Ident. No. 5029700	Ident. No. 5019800 Ident. No. 4678000






Best-seller!

MAGNETIC STIRRING

Watch the video:
www.ika.com/video



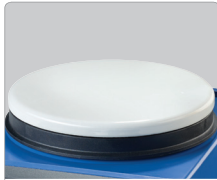

	RCT basic	RET basic
Technical data		
Max. stirring quantity (H ₂ O)	20 l	20 l
Motor rating input / output	16 / 9 W	16 / 9 W
Speed range	50 – 1500 rpm	50 – 1700 rpm
Heat output	600 W	600 W
Temperature range	RT – 310 °C	RT – 340 °C
Adjustable safety circuit	50 – 360 °C	50 – 360 °C
Control accuracy with sensor	PT 1000: ± 1 K	PT 1000: ± 1 K
	ETS-D5: ± 0.5 K	ETS-D5: ± 0.5 K
	ETS-D6: ± 0.2 K	ETS-D6: ± 0.2 K
Heating plate material	aluminum alloy	stainless steel
Heating plate dimensions	Ø 135 mm	Ø 135 mm
Dimensions (W x D x H)	160 x 270 x 85 mm	160 x 270 x 95 mm
Weight	2.5 kg	2.5 kg
	Ident. No. 20002621*	Ident. No. 3622000

* PT 1000.60 included in delivery.



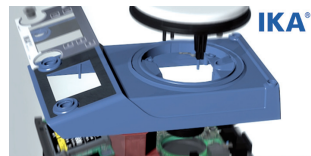


Magnetic stirrers with heating



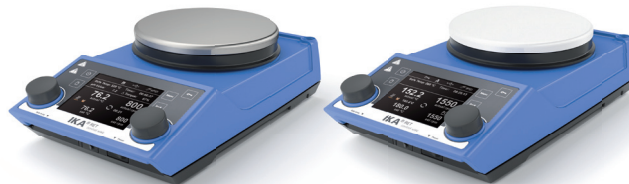
RET® control-visc with white coated heating plate!

- > Offers excellent chemical resistance
- > Easy to clean



▶ RET® control-visc

Watch the video:
www.ika.com/video



Technical data

Max. stirring quantity (H ₂ O)
Motor rating input / output
Speed range
Heat output
Temperature range
Adjustable safety circuit
Control accuracy with sensor
Heating plate material
Heating plate dimensions
Dimensions (W x D x H)
Weight

RET® control-visc

replaces RET control/t

20 l
22 / 12 W
50 – 1700 rpm
600 W
RT – 340 °C
50 – 380 °C
PT 100: ± 0.2 K
stainless steel 1.4301
Ø 135 mm
160 x 270 x 85 mm
3 kg

Ident. No. 5020000*

RET® control-visc white

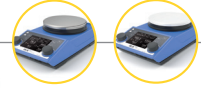
replaces RET control/t

20 l
22 / 12 W
50 – 1700 rpm
600 W
RT – 340 °C
50 – 380 °C
PT 100: ± 0.2 K
white ceramic
Ø 135 mm
160 x 270 x 85 mm
3 kg

Ident. No. 5030000*

* PT 100.70 included in delivery





TFT display for better image quality and easy navigation



Extra strong heating



Integrated temperature sensor for precise temperature control



Torque trend measurement
Viscosity changes in the medium can be measured by using a torque measurement device. The results can be depicted on the display



Integrated weighing function allows the user to measure weight changes of up to 5,000 g



USB interface to control and document all parameters using labworldsoft® software and for updating your firmware



The Magnetic Stirrer for Scientists

Strongest and safest magnetic stirrer in its class with integrated patented weighing function and high sensitive torque trend indication



Magnetic stirrers with heating



Watch the video now:
www.ika.com/video



**C-MAG
HS 7**



DIN Bushing 12878 for connecting an electronic contact thermometer



Elevated control panel for protection against spilled liquids



Hot Top indicator to prevent burns

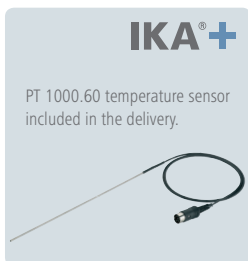
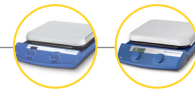


Ceramic set-up plate offers excellent chemical resistance to acid, bases and solvents



Technical data	C-MAG HS 4	C-MAG HS 7	C-MAG HS 10
Max. stirring quantity (H ₂ O)	5 l	10 l	15 l
Motor rating input / output	15 / 1.5 W	15 / 1.5 W	15 / 1.5 W
Speed range	100 – 1500 rpm	100 – 1500 rpm	100 – 1500 rpm
Heat output	250 W	1000 W	1500 W
Temperature range	50 – 500 °C	50 – 500 °C	50 – 500 °C
Display	LED	LED	LED
Max. stirring bar length	30 mm	80 mm	80 mm
Safety circuit	550 °C (fixed)	550 °C (fixed)	550 °C (fixed)
Control accuracy with sensor	–	ETS-D5 / ± 0.5 K	ETS-D5 / ± 0.5 K
Heating plate material	ceramic	ceramic	ceramic
Set-up plate dimensions	100 x 100 mm	180 x 180 mm	260 x 260 mm
Weight	3 kg	5 kg	6 kg
	Ident. No. 3581000	Ident. No. 3581200 C-MAG HS 7 Package Ident. No. 9015900	Ident. No. 3581400

Package details
on page 158



Elevated control panel for protection against spilled liquids



Hot Top indicator to prevent burns



LCD display for simultaneous display of target and actual temperatures



Integrated temperature sensor for precise temperature control



Ceramic set-up plate offers excellent chemical resistance to acid, bases and solvents



	C-MAG HS 4 digital	C-MAG HS 7 digital	C-MAG HS 10 digital
Technical data			
Max. stirring quantity (H ₂ O)	5 l	10 l	15 l
Motor rating input / output	15 / 1.5 W	15 / 1.5 W	15 / 1.5 W
Speed range	100 – 1500 rpm	100 – 1500 rpm	100 – 1500 rpm
Heat output	250 W	1000 W	1500 W
Temperature range	50 – 500 °C	50 – 500 °C	50 – 500 °C
Display	LCD	LCD	LCD
Max. stirring bar length	30 mm	80 mm	80 mm
Adjustable safety circuit	550 °C (fixed)	550 °C (fixed)	550 °C (fixed)
Control accuracy with sensor	± 0.5 K	± 0.5 K	± 0.5 K
Heating plate material	ceramic	ceramic	ceramic
Set-up plate dimensions	100 x 100 mm	180 x 180 mm	260 x 260 mm
Weight	3 kg	5 kg	6 kg
	Ident. No. 25001025*	Ident. No. 3487000*	Ident. No. 25001026*

* PT 1000.60 included in delivery



Multiposition stirrers with / without heating

RT 15



Heating foil for homogeneous temperature distribution of the heating plate



Reverse rotation switch for better mixing results



Wear-free magnetic coils for consistent and silent operation



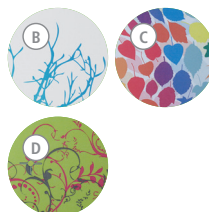
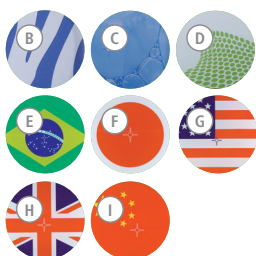
	RT 5	RT 10	RT 15
Technical data	replaces RT 5 power	replaces RT 10 power	replaces RT 15 power
Number of stirring positions	5	10	15
Max. stirring quantity (H ₂ O)	0.4 l	0.4 l	0.4 l
Distance between stirring places	90 mm	90 mm	90 mm
Deviation for individual stirring positions	0%	0%	0%
Speed display	LED	LED	LED
Speed range	0 – 1000 rpm	0 – 1000 rpm	0 – 1000 rpm
Speed adjustment	10 rpm steps	10 rpm steps	10 rpm steps
Heat output	175 W	375 W	580 W
Temperature range heating plate	RT – 120 °C	RT – 120 °C	RT – 120 °C
Max. temperature medium (dep. on vessel)	70 °C	70 °C	70 °C
Set-up plate material	aluminum alloy	aluminum alloy	aluminum alloy
Set-up plate dimensions	110 x 495 mm	180 x 495 mm	270 x 495 mm
Dimensions (W x D x H)	120 x 610 x 60 mm	190 x 610 x 60 mm	280 x 610 x 60 mm
Weight	4 kg	7.5 kg	10.5 kg
	Ident. No. 3690600	Ident. No. 3691100	Ident. No. 3692600



	RO 5	RO 10	RO 15
Technical data			
Number of stirring positions	5	10	15
Max. stirring quantity (H ₂ O)	0.4 l	0.4 l	0.4 l
Distance between stirring places	90 mm	90 mm	90 mm
Deviation for individual stirring positions	0%	0%	0%
Speed display	LED	LED	LED
Speed range	0 – 1200 rpm	0 – 1200 rpm	0 – 1200 rpm
Speed adjustment	10 rpm steps	10 rpm steps	10 rpm steps
Set-up plate material	stainless steel 1.4301	stainless steel 1.4301	stainless steel 1.4301
Set-up plate dimensions	120 x 470 mm	190 x 470 mm	280 x 470 mm
Dimensions (W x D x H)	120 x 570 x 60 mm	190 x 570 x 60 mm	280 x 570 x 60 mm
Weight	3 kg	5 kg	7 kg
	Ident. No. 3690500	Ident. No. 3691000	Ident. No. 3692500



Magnetic stirrers without heating



Technical data

Max. stirring quantity (H₂O)

1 l

Motor rating input / output

3 / 2 W

Speed range

0 – 2500 rpm

Speed display

LED

Max. stirring bar length

30 mm

Speed adjustment

50 rpm steps

Set-up plate material

glass

Set-up plate dimensions

Ø 115 mm

Dimensions (W x D x H)

145 x 160 x 45 mm

Weight

0.54 kg

Permissible ambient temperature

5 – 40 °C

Permissible relative moisture

80%

Protection class acc. to
DIN EN 60529

IP 54

Voltage

100 – 240 V

Frequency

50/60 Hz

big squid

1.5 l

3 / 2 W

0 – 2500 rpm

LED

30 mm

50 rpm steps

glass

Ø 160 mm

180 x 195 x 40 mm

0.7 kg

5 – 40 °C

80%

IP 54

100 – 240 V

50/60 Hz

- (A) Ident. No. 3671000 white
- (B) Ident. No. 3698200 zebra
- (C) Ident. No. 3698300 bubbles
- (D) Ident. No. 3698400 wave
- (E) Ident. No. 4175500 seleção
- (F) Ident. No. 4175300 solar sphere
- (G) Ident. No. 4175100 stars and stripes
- (H) Ident. No. 4175200 union Jack
- (I) Ident. No. 4175400 red flag

- (A) Ident. No. 3672000 white
- (B) Ident. No. 3857200 frozen
- (C) Ident. No. 3857100 leaves
- (D) Ident. No. 3857300 twist



Electronically controlled, high power motor for a higher capacity and higher speed range



Glass plate for excellent chemical resistance to acids, bases and solvents



The digital display enables precise setting of speed



color squid

- > For maximum stirring quantity of 1 l (H₂O)
- > Available in various interesting motives

big squid

- > For maximum stirring quantity of 1.5 l (H₂O)
- > Higher speed range from 0 – 2500 rpm

IKA®+

The difference between the color squid and the big squid is the **set-up plate diameter.**

color squid: Ø 115 mm
big squid: Ø 160 mm



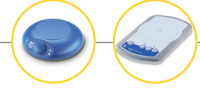
Magnetic stirrers without heating

IKA®+

Mobile unit with
rechargeable batteries
with long operating
time (8 – 12 h)



Technical data	Mini MR standard	topolino	topolino mobil
Max. stirring quantity (H ₂ O)	1 l	0.25 l	0.25 l
Motor rating input / output	3 / 2 W	1 / 0.8 W	1 / 0.8 W
Speed range	0 – 2500 rpm	300 – 1800 rpm	300 – 1800 rpm
Max. stirring bar length	30 mm	30 mm	30 mm
Speed adjustment	–	stepless	stepless
Set-up plate material	polyester	synthetic (PP)	synthetic (PP)
Set-up plate dimensions	115 x 115 mm	Ø 80 mm	Ø 80 mm
Dimensions (W x D x H)	114 x 127 x 37 mm	95 x 115 x 37 mm	Ø 140 x 42 mm
Weight	0.25 kg	0.32 kg	0.60 kg
Permissible ambient temperature	5 – 40 °C	5 – 40 °C	5 – 40 °C
Permissible relative moisture	80%	80%	80%
Protection class acc. to DIN EN 60529	IP 42	IP 21	IP 20
Voltage	100 – 240 V	100 – 240 V	100 – 240 V
Frequency	50/60 Hz	50/60 Hz	50/60 Hz
	Ident. No. 3674000	Ident. No. 3368000	Ident. No. 3381300



Switchable reverse rotation every 30 seconds



Modern wear-free magnetic coil technology



Ultra-flat for stirring quantities of up to 800 ml (H₂O)



(A)

lab disc

- > Set-up plate and casing made of chemically resistant materials
- > Slip-proof and safe stand

Height only
12mm

lab disc
0.8 l
5 / 3 W
15 – 1500 rpm
25 mm
stepless
polyester
Ø 100 mm
117 x 180 x 12 mm
0.3 kg
5 – 40 °C
80%
IP 65
100 – 240 V
50/60 Hz



(B)



(C)

- (A) Ident. No. 3907500 white
- (B) Ident. No. 3765000 pattern
- (C) Ident. No. 3916100 stream



Magnetic stirrers without heating

Maxi MR 1 digital



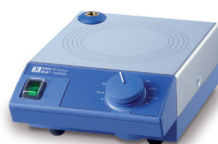
For stirring quantities up to 150 l (H₂O)



Infinitely adjustable speed with digital display



Timer or continuous operation



Technical data	KMO 2 basic	Midi MR 1 digital	Maxi MR 1 digital
Max. stirring quantity (H ₂ O)	5 l	50 l	150 l
Motor rating input / output	14 / 4 W	70 / 19 W	80 / 35 W
Speed range	0 – 1100 rpm	0 – 1000 rpm	0 – 600 rpm
Speed display	scale	LCD	LCD
Max. stirring bar length	50 mm	80 mm	155 mm
Speed adjustment	stepless	stepless	stepless
Heating plate material	stainless steel 1.4301	stainless steel 1.4301	stainless steel 1.4301
Set-up plate dimensions	140 x 120 mm	350 x 350 mm	500 x 500 mm
Dimensions (W x D x H)	140 x 200 x 75 mm	360 x 430 x 110 mm	505 x 585 x 110 mm
Weight	1.4 kg	10.7 kg	16 kg
Permissible ambient temperature	5 – 40 °C	5 – 40 °C	5 – 40 °C
Permissible relative moisture	80%	80%	80%
Protection class acc. to DIN EN 60529	IP 21	IP 21	IP 21
Voltage	230 V	230 V	230 V
Frequency	50/60 Hz	50/60 Hz	50/60 Hz
	Ident. No. 2812000	Ident. No. 2621900	Ident. No. 2621800



C-MAG MS 10



Ceramic set-up plate offers excellent chemical resistance to acid, bases and solvents



Powerful motor for stirring quantities up to 15 l (H₂O)



Elevated control panel for protection against spilled liquids



	C-MAG MS 4	C-MAG MS 7	C-MAG MS 10
Technical data			
Max. stirring quantity (H ₂ O)	5 l	10 l	15 l
Motor rating input / output	15 / 1.5 W	15 / 1.5 W	15 / 1.5 W
Speed range	100 – 1500 rpm	100 – 1500 rpm	100 – 1500 rpm
Speed display	scale	scale	scale
Max. stirring bar length	30 mm	80 mm	80 mm
Speed adjustment	scale (0 – 6)	scale (0 – 6)	scale (0 – 6)
Heating plate material	ceramic	ceramic	ceramic
Set-up plate dimensions	100 x 100 mm	180 x 180 mm	260 x 260 mm
Dimensions (W x D x H)	150 x 260 x 105 mm	220 x 330 x 105 mm	300 x 415 x 105 mm
Weight	3 kg	5 kg	6 kg
Permissible ambient temperature	5 – 40 °C	5 – 40 °C	5 – 40 °C
Permissible relative moisture	80%	80%	80%
Protection class acc. to DIN EN 60529	IP 21	IP 21	IP 21
Voltage	230 V	230 V	230 V
Frequency	50/60 Hz	50/60 Hz	50/60 Hz
	Ident. No. 3582200	Ident. No. 3582400	Ident. No. 3582600





Magnetic Stirrers | Accessories

Electronic contact thermometers

- | | Ident. No. |
|---|------------|
| ① ETS-D5 | 3378000 |
| Electronic contact thermometer, -50 – 450 °C, 0.1 K resolution | |
| ② ETS-D6 | 3378100 |
| Electronic contact thermometer. Similar to ETS-D5, additionally comes equipped with integrated pH measuring instrument (without pH electrode) | |

Temperature sensors for ETS-D5 / D6

- | | Ident. No. |
|--|------------|
| ③ H 62.51 | 2735451 |
| Temperature sensor, stainless steel, Ø 3 mm, 260 mm length | |
| ④ H 66.51 | 2735551 |
| Temperature sensor, stainless steel, glass-coated, Ø 6 mm, 260 mm length | |
| H 66.53 | 4499900 |
| Temperature sensor, coated with SafeCoat, Ø 3 mm, 260 mm length | |

ETS-D5 / D6 Accessories

- | | Ident. No. |
|----------------------|------------|
| ⑤ H 70 | 2735600 |
| Extension cable, 1 m | |

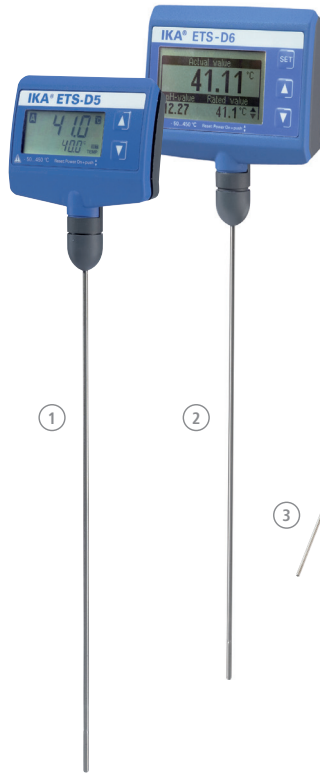
Temperature sensors for RCT / RET basic and C-MAG HS digital series

- | | Ident. No. |
|--|------------|
| ⑥ PT 1000.60 | 3516800 |
| Temperature sensor, stainless steel, Ø 3 mm, 230 mm length | |
| ⑦ PT 1000.70 | 3736000 |
| Temperature sensor, stainless steel, glass-coated, Ø 7 mm, 230 mm length | |
| ⑧ PT 1000.80 | 4443000 |
| Temperature sensor, stainless steel, Ø 3 mm, 150 mm length | |
| PT 1000.90 | 4480600 |
| Temperature sensor, stainless steel, coated with SafeCoat, Ø 3 mm, 230 mm length | |

Temperature sensors for RET® control-visc

- | | Ident. No. |
|--|------------|
| PT 100.70 | 20000440 |
| Temperature sensor, stainless steel, Ø 3 mm, 230 mm length | |
| ⑨ PT 1000.50 | 3367600 |
| Temperature sensor, dual stainless steel, Ø 3 mm, 230 mm length | |
| ⑩ PT 1000.51 | 3377700 |
| Temperature sensor, dual stainless steel, glass-coated, Ø 8 mm | |
| ⑪ PT 100.51 | 2600300 |
| Temperature sensor, glass-coated, Ø 8 mm, 230 mm length | |
| PT 100.53 | 4499700 |
| Temperature sensor, stainless steel, coated with SafeCoat, Ø 3 mm, 230 mm length | |
| PT 1000.53 | 4499800 |
| Temperature sensor, dual coated with SafeCoat, 230 mm length | |





1

2



3

4

5



6



7



9



8



10



11





Magnetic Stirrers | Accessories

Advantages beaker, stainless steel

- > No eddy current losses
- > High magnetic adhesion force
- > Very good heat transfer (3 L beaker and up: due to a round deepening area for fitting heating plates with Ø 135 mm)

Oil bath attachments

Ident. No.

H 29 2829400

Oil bath attachment, 1 l, aluminum, inner Ø 136 – 180 mm, 81 mm height for use with oil only

H 30 2829500

Oil bath attachment, 1.5 l, aluminum, inner Ø 136 – 190 mm, 110 mm height for use with oil only

Beakers

10 H 1000 4444401

Beaker, stainless steel, 1 l, inner Ø 160 mm, 79 mm height

11 H 1500 4444501

Beaker, stainless steel, 1.5 l, inner Ø 140 mm, 160 mm height

12 H 3000 4444503

Beaker, stainless steel, 3 l, inner Ø 180 mm, 119 mm height

13 H 5000 4444505

Beaker, stainless steel, 5 l, inner Ø 220 mm, 142 mm height

14 H 8000 4444508

Beaker, stainless steel, 8 l, inner Ø 265 mm, 162 mm height



10



11



12

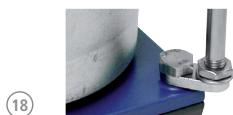


13



14





Protective covers

H 102	4281600
Cover for RH basic	
H 103	4299100
Cover for RH digital	
H 100	3409600
Cover for RET basic	
H 104	4209500
Cover for RET® control-visc	

Other accessories

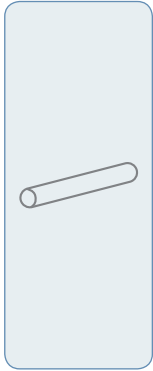
H 11 (Euro USA UK CH plug)	
	1091500
	3564500
	2410700
	1091600
Mains cable, spare	
H 16 V	1545100
Support rod, Ø 10 mm, 450 mm length	
H 16.1	5000500
Extension for support rod	
H 44	2437700
Boss head clamp	
H 38	3547700
Holding rod	
HG 600	20003416
Heating jacket for beaker 600 ml	
HG 1000	20003415
Heating jacket for beaker 1000 ml	
BC 1000	20003417
Beaker cap	
C-MAG Adapter	25001022
Heating block adapter for C-MAG	

Stirring bars

RS 1	1358600
Consisting of IKAFLON® (10 – 80 mm) and TRIKA® (25 and 40 mm) magnetic stirring bars	
RS 2	4499100
Consisting of IKAFLON® 40 round, 40 glass, 30 power, 40 slide round, 40 ellipse, 40 TRIKA®, 25 cross, 9 crown and 25 bone magnetic stirring bars	
RSE	1293100
Stirring bar remover	



Magnetic Stirrers | Accessories

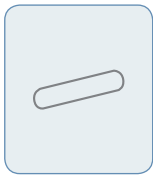


Stirring bars

IKAFLON® round

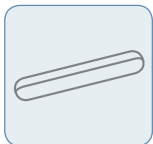
	Dimensions (L x Ø)	Ident. No.
IKAFLON® 10 Set (5 Pcs) round PTFE-coated	10 x 6 mm	4488600
IKAFLON® 15 Set (5 Pcs) round PTFE-coated	15 x 6 mm	4488700
IKAFLON® 20 Set (5 Pcs) round PTFE-coated	20 x 8 mm	4488800
IKAFLON® 25 Set (5 Pcs) round PTFE-coated	25 x 8 mm	4488900
IKAFLON® 30 Set (5 Pcs) round PTFE-coated	30 x 8 mm	4489000
IKAFLON® 40 Set (5 Pcs) round PTFE-coated	40 x 8 mm	4489100
IKAFLON® 50 Set (5 Pcs) round PTFE-coated	50 x 8 mm	4489200
IKAFLON® 80 Set (5 Pcs) round PTFE-coated	80 x 10 mm	4489300
IKAFLON® 110 round PTFE-coated*	108 x 27 mm	0793300
IKAFLON® 155 round PTFE-coated*	153 x 27 mm	1129000

* Used for large magnetic stirrers like Maxi MR 1 digital



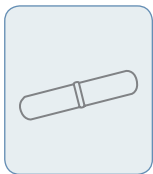
IKAFLON® glass round

	Dimensions (L x Ø)	Ident. No.
IKAFLON® glass 25 Set (5 Pcs) round	25 x 6 mm	4492200
IKAFLON® glass 30 Set (5 Pcs) round	30 x 6 mm	4492400
IKAFLON® glass 40 Set (5 Pcs) round	45 x 8 mm	4492600
IKAFLON® glass 50 Set (5 Pcs) round	50 x 8 mm	4492800



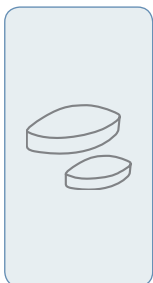
IKAFLON® power SmSo

	Dimensions (L x Ø)	Ident. No.
IKAFLON® 20 Set (5 Pcs) power SmSo PTFE-coated	20 x 6 mm	4493000
IKAFLON® 30 Set (5 Pcs) power SmSo PTFE-coated	30 x 6 mm	4493200
IKAFLON® 50 Set (5 Pcs) power SmSo PTFE-coated	50 x 8 mm	4493400



IKAFLON® slide round

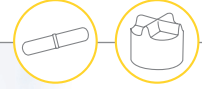
	Dimensions (L x Ø)	Ident. No.
IKAFLON® 25 Set (5 Pcs) slide round PTFE-coated	25 x 6 mm	4493800
IKAFLON® 30 Set (5 Pcs) slide round PTFE-coated	30 x 6 mm	4494000
IKAFLON® 40 Set (5 Pcs) slide round PTFE-coated	40 x 8 mm	4494200
IKAFLON® 50 Set (5 Pcs) slide round PTFE-coated	50 x 8 mm	4494400



IKAFLON® ellipse

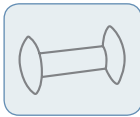
	Dimensions (L x Ø)	Ident. No.
IKAFLON® 20 Set (5 Pcs) ellipse PTFE-coated	20 x 10 mm	4494600
IKAFLON® 25 Set (5 Pcs) ellipse PTFE-coated	25 x 12 mm	4494800
IKAFLON® 30 Set (5 Pcs) ellipse PTFE-coated	32 x 16 mm	4495000
IKAFLON® 35 Set (5 Pcs) ellipse PTFE-coated	35 x 15 mm	4495200
IKAFLON® 40 Set (5 Pcs) ellipse PTFE-coated	40 x 20 mm	4495400
IKAFLON® 50 Set (5 Pcs) ellipse PTFE-coated	50 x 20 mm	4495600
IKAFLON® 60 Set (5 Pcs) ellipse PTFE-coated	64 x 20 mm	4495800
IKAFLON® 70 Set (5 Pcs) ellipse PTFE-coated	70 x 20 mm	4496000





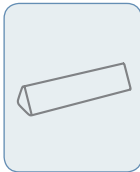
IKAFLON® cross

	Dimensions (L x Ø)	Ident. No.
IKAFLON® 10 Set (5 Pcs) cross PTFE-coated	10 x 10 mm	4496200
IKAFLON® 20 Set (5 Pcs) cross PTFE-coated	20 x 20 mm	4496400
IKAFLON® 25 Set (5 Pcs) cross PTFE-coated	25 x 25 mm	4496600
IKAFLON® 30 Set (5 Pcs) cross PTFE-coated	30 x 30 mm	4496800
IKAFLON® 38 Set (5 Pcs) cross PTFE-coated	38 x 38 mm	4497000



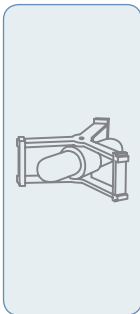
IKAFLON® bone

	Dimensions (L x Ø)	Ident. No.
IKAFLON® 37 Set (5 Pcs) bone PTFE-coated	35 x 8 x 20 mm	4497200
IKAFLON® 54 Set (5 Pcs) bone PTFE-coated	55 x 8 x 20 mm	4497400



TRIKA®

	Dimensions (L x Ø)	Ident. No.
TRIKA® 25 Set (5 Pcs) PTFE-coated	25 x 8 mm	4499300
TRIKA® 35 Set (5 Pcs) PTFE-coated	35 x 9 mm	4499400
TRIKA® 55 Set (5 Pcs) PTFE-coated	55 x 14 mm	4499500
TRIKA® 80 Set (5 Pcs) PTFE-coated	80 x 17 mm	4499600



IKAFLON® beaker

	(Ø x Height in mm, for beaker)	Ident. No.
IKAFLON® 67 beaker PTFE-coated	67 x 21 mm with 50 x 8	4497600
IKAFLON® 74 beaker PTFE-coated	74 x 29 mm with 60 x 9	4497800
IKAFLON® 103 beaker PTFE-coated	103 x 32 mm with 80 x 10	4498000
IKAFLON® 125 beaker PTFE-coated	125 x 48 mm with 106 x 25	4498200



IKAFLON® crown

	(Ø x Height in mm)	Ident. No.
IKAFLON® 9 Set (5 Pcs) crown PTFE-coated	9 x 6 mm	4498400





Magnetic Stirrers | Accessories



Synthesis blocks

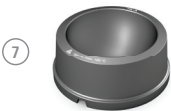
Dry heating block square series

	Hole Ø	Dimensions	Ident. No.
① H 135.10 Square carrier without handle	–	160 x 160 mm	25000832
H 135.101 Block 16 x 4 ml	15.2 mm	79 x 79 mm	25000626
H 135.102 Block 16 x 8 ml	17.5 mm	79 x 79 mm	25000627
② H 135.103 Block 9 x 16 ml	20.5 mm	79 x 79 mm	25000628
③ H 135.104 Block 4 x 20 ml	28.5 mm	79 x 79 mm	25000629
H 135.105 Block 4 x 30 ml	28.5 mm	79 x 79 mm	25000630
④ H 135.106 Block 4 x 40 ml	28.5 mm	79 x 79 mm	25000631
H 135.107 Block 100 ml	–	79 x 79 mm	25000632
⑤ H 135.108 Block 250 ml	–	79 x 79 mm	25000633



100 ml Flask heating block series

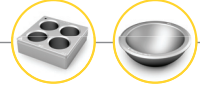
	Max. Outer Ø	Inner Ø	Ident. No.
⑥ H 135.20 Flask carrier 100 ml without handle	142 mm	–	25000634
H 135.201 Flask inlay 10 ml	–	33.8 mm	25000636
H 135.202 Flask inlay 25 ml	–	43.8 mm	25000637
H 135.203 Flask inlay 50 ml	–	52.8 mm	25000638



500 ml Flask heating block series

	Max. Outer Ø	Inner Ø	Ident. No.
⑦ H 135.30 Flask carrier 500 ml without handle	142 mm	–	25000639
H 135.301 Flask inlay 100 ml	–	66.3 mm	25000641
H 135.302 Flask inlay 250 ml	–	88 mm	25000642





8



9



1000 ml Flask heating block series

		Max. Outer Ø	Inner Ø	Ident. No.
8	H 135.40 Flask carrier 1000 ml without handle	166.3 mm	–	25000833
9	H 135.401 Flask inlay 500 ml	–	108 mm	25000644

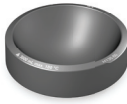
10



2000 ml Flask heating block series

		Max. Outer Ø	Inner Ø	Ident. No.
10	H 135.50 Flask carrier 2000 ml without handle	194.7 mm	–	25000834
	H 135.501 Flask inlay 1000 ml	–	131.8 mm	25000645

11



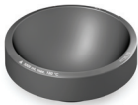
12



3000 ml Flask heating block series

		Max. Outer Ø	Inner Ø	Ident. No.
11	H 135.60 Flask carrier 3000 ml without handle	218.3 mm	–	25000835
12	H 135.601 Flask inlay 2000 ml	–	162 mm	25000648

13



14



5000 ml Flask heating block series

		Max. Outer Ø	Inner Ø	Ident. No.
13	H 135.70 Flask carrier 5000 ml without handle	259.7 mm	–	25000836
14	H 135.701 Flask inlay 3000 ml	–	194.5 mm	25000651





Overhead Stirrers



IKA® offers overhead stirrers for your stirring and mixing tasks in the lab – for low to high viscosities. Safety, power and intelligence were again at the core of the development of this product range.

IKA® overhead stirrers process stirring quantities of up to 200 liters.





The wireless controller

- > Helps protect the user from toxic material exposure
- > Preserving sample integrity



**EUROSTAR
100
control**



TFT Display for better image quality and easy navigation



External probe for connection to a temperature sensor for accurate temperature control



USB interface to control and document rheological changes and other parameters using labworldsoft® software and for updating your firmware



Brushless EC motor for longer life span, low maintenance and higher efficiency



Wireless Controller (WiCo)
Removable wireless controller for easy and user-friendly operation



Electronic Overhead Stirrers



Rotating knob for adjusting the speed and **pressing knob** for navigating through the menu on the wireless controller



Digital display for precise monitoring of set and actual speeds



Torque trend display to get real-time information on viscosity changes



Technical data

Stirring quantity max. (H ₂ O)	15 l 25 l
Max. viscosity	10,000 mPas 30,000 mPas
Motor rating input / output	70 / 42 W 118 / 84 W
Speed range	0/30 – 2000 rpm
Max. torque at stirring shaft	20 Ncm 40 Ncm
Temp. sensor connection	no
Chuck range	0.5 – 10 mm
Dimensions (W x D x H)	86 x 208 x 248 mm
Weight	4.4 kg
Permissible ambient temp.	5 – 40 °C
Permissible relative moisture	80%
Protection class DIN EN 60529	IP 40

EUROSTAR 20 digital | 40 digital

replaces RW 14; RW 16;
EUROSTAR digital

Stirring quantity max. (H ₂ O)	15 l 25 l
Max. viscosity	10,000 mPas 30,000 mPas
Motor rating input / output	70 / 42 W 118 / 84 W
Speed range	0/30 – 2000 rpm
Max. torque at stirring shaft	20 Ncm 40 Ncm
Temp. sensor connection	no
Chuck range	0.5 – 10 mm
Dimensions (W x D x H)	86 x 208 x 248 mm
Weight	4.4 kg
Permissible ambient temp.	5 – 40 °C
Permissible relative moisture	80%
Protection class DIN EN 60529	IP 40

Ident. No. 4442000
Ident. No. 4444000

EUROSTAR 60 digital | control

replaces EUROSTAR power basic;
EUROSTAR power control-visc

Stirring quantity max. (H ₂ O)	40 l
Max. viscosity	50,000 mPas
Motor rating input / output	176 / 126 W 168 / 131 W
Speed range	0/30 – 2000 rpm
Max. torque at stirring shaft	60 Ncm
Temp. sensor connection	no PT 1000
Chuck range	0.5 – 10 mm
Dimensions (W x D x H)	86 x 208 x 248 mm 86 x 230 x 267 mm
Weight	4.4 kg 4.7 kg
Permissible ambient temp.	5 – 40 °C
Permissible relative moisture	80%
Protection class DIN EN 60529	IP 40

Ident. No. 4446000
Ident. No. 4440000*

* H 67.60 and WH 11 included in the delivery
of all EUROSTAR control devices



TFT Display for better image quality and easy navigation



USB interface to control and document rheological changes and other parameters using labworldsoft® software and for updating your firmware



Wireless Controller (WiCo)
Removable wireless controller for easy and user-friendly operation



Brushless EC motor for longer life span, low maintenance and higher efficiency



Technical data	EUROSTAR 100 digital control replaces EUROSTAR control-visc P1	EUROSTAR 200 digital control replaces EUROSTAR control-visc P4
Stirring quantity max. (H ₂ O)	100 l	100 l
Max. viscosity	70,000 mPas	100,000 mPas
Motor rating input / output	186 / 136 W 174 / 142 W	130 / 84 W
Speed range	0/30 – 1300 rpm	0/6 – 2000 rpm
Max. torque at stirring shaft	100 Ncm	200 Ncm
Temp. sensor connection	no PT 1000	no PT 1000
Chuck range	0.5 – 10 mm	0.5 – 10 mm
Dimensions (W x D x H)	86 x 208 x 248 mm 86 x 230 x 267 mm	91 x 209 x 274 mm 91 x 231 x 274 mm
Weight	4.4 kg 4.7 kg	4.6 kg 4.9 kg
Permissible ambient temp.	5 – 40 °C	5 – 40 °C
Permissible relative moisture	80%	80%
Protection class DIN EN 60529	IP 40	IP 40
	Ident. No. 4238100 Ident. No. 4028500*	Ident. No. 3990000 Ident. No. 3992000*



Electronic Overhead Stirrers



▶ OVERHEAD STIRRERS

Watch the video now:
www.ika.com/video



Technical data

Stirring quantity max. (H ₂ O)	100 l
Max. viscosity	150,000 mPas
Motor rating input / output	134 / 76 W
Speed range	0/4 – 530 rpm
Max. torque at stirring shaft	660 Ncm
Temp. sensor connection	PT 1000
Chuck range	0.5 – 10 mm
Dimensions (W x D x H)	91 x 231 x 379 mm
Weight	5.8 kg
Permissible ambient temp.	5 – 40 °C
Permissible relative moisture	80%
Protection class DIN EN 60529	IP 40

EUROSTAR 200 control P4

replaces EUROSTAR
control-visc P7

Stirring quantity max. (H ₂ O)	100 l
Max. viscosity	150,000 mPas
Motor rating input / output	134 / 76 W
Speed range	0/4 – 530 rpm
Max. torque at stirring shaft	660 Ncm
Temp. sensor connection	PT 1000
Chuck range	0.5 – 10 mm
Dimensions (W x D x H)	91 x 231 x 379 mm
Weight	5.8 kg
Permissible ambient temp.	5 – 40 °C
Permissible relative moisture	80%
Protection class DIN EN 60529	IP 40

Ident. No. 4090000*

EUROSTAR 20 high speed digital | control

replaces EUROSTAR
power control-visc 6000

Stirring quantity max. (H ₂ O)	20 l
Max. viscosity	10,000 mPas
Motor rating input / output	176 / 125 W
Speed range	0/150 – 6000 rpm
Max. torque at stirring shaft	20 Ncm
Temp. sensor connection	no PT 1000
Chuck range	fixed
Dimensions (W x D x H)	86 x 208 x 325 mm 86 x 230 x 325 mm
Weight	5.3 kg 5.6 kg
Permissible ambient temp.	5 – 40 °C
Permissible relative moisture	80%
Protection class DIN EN 60529	IP 40

Ident. No. 4028600
Ident. No. 25001314*

* H 67.60 and WH 11 included in the delivery
of all EUROSTAR control devices



**EUROSTAR
200
control P4**



TFT Display for better image quality and easy navigation



Laboratory stirrer designed for highly viscous applications and intensive mixing



Torque trend display to get real-time information on viscosity changes



Extremely powerful laboratory stirrer designed with **high torque**



USB interface to control and document rheological changes and other parameters using labworldsoft® software and for updating your firmware



RS 232 interface for PC connection



Wireless Controller (WiCo)
Removable wireless controller for easy and user-friendly operation





Mechanical Overhead Stirrers



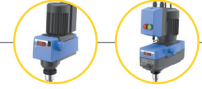
RW 20 digital

Technical data

Stirring quantity max. (H ₂ O)	20 l
Max. viscosity	10,000 mPas
Motor rating input/output	70 / 35 W
Permissible ON time	100%
Speed range	60 – 2000 rpm (50 Hz)
Max. torque at stirring shaft	150 Ncm
Display	LED
Temp. sensor connection	no
Chuck range	0.5 – 10 mm
Hollow shaft	yes
Dimensions (W x D x H)	88 x 212 x 294 mm
Weight	3.1 kg
Permissible ambient temp.	5 – 40 °C
Permissible relative moisture	80%
Protection class DIN EN 60529	IP 20

Ident. No. 3593000





**RW 28
digital**



Special motor over heating protection



Dual-speed range



Technical data

Stirring quantity max. (H ₂ O)	80 l
Max. viscosity	50,000 mPas
Motor rating input/output	220 / 90 W
Permissible ON time	100%
Speed range	60 – 1400 rpm (50 Hz)
Max. torque at stirring shaft	900 Ncm
Display	LED
Temp. sensor connection	no
Chuck range	1 – 10 mm
Hollow shaft	yes
Dimensions (W x D x H)	123 x 252 x 364 mm
Weight	7.5 kg
Permissible ambient temp.	5 – 40 °C
Permissible relative moisture	80%
Protection class DIN EN 60529	IP 40

RW 28 digital

replaces RW 28 basic

Stirring quantity max. (H ₂ O)	80 l
Max. viscosity	50,000 mPas
Motor rating input/output	220 / 90 W
Permissible ON time	100%
Speed range	60 – 1400 rpm (50 Hz)
Max. torque at stirring shaft	900 Ncm
Display	LED
Temp. sensor connection	no
Chuck range	1 – 10 mm
Hollow shaft	yes
Dimensions (W x D x H)	123 x 252 x 364 mm
Weight	7.5 kg
Permissible ambient temp.	5 – 40 °C
Permissible relative moisture	80%
Protection class DIN EN 60529	IP 40

Ident. No. 5040000
RW 28 digital Package
Ident. No. 9023200

RW 47 digital

replaces RW 47 D

Stirring quantity max. (H ₂ O)	200 l
Max. viscosity	100,000 mPas
Motor rating input/output	513 / 370 W
Permissible ON time	100%
Speed range	57 – 1300 rpm (50 Hz)
Max. torque at stirring shaft	3000 Ncm
Display	LED
Temp. sensor connection	no
Chuck range	3 – 16 mm
Hollow shaft	no
Dimensions (W x D x H)	145 x 358 x 465 mm
Weight	16 kg
Permissible ambient temp.	5 – 40 °C
Permissible relative moisture	80%
Protection class DIN EN 60529	IP 54

Ident. No. 4050000
RW 47 digital Package
Ident. No. 9023300

Package details
on page 158





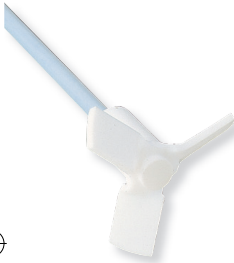
Overhead Stirrers | Accessories



Propeller stirrer, 4-bladed

Standard stirring element for drawing the material to be mixed from the top to the bottom. It creates local shearing forces and axial flow in the vessel. This propeller stirrer is used at medium to high speeds.

Name	R 1342	R 1345	R 2302
Ident. No.	0741000	0741300	0739000
Stirrer (Ø)	50 mm	100 mm	150 mm
Shaft (Ø)	8 mm	8 mm	13 mm
Shaft length	350 mm	540 mm	800 mm



Propeller stirrer, 3-bladed

Flow-efficient design for drawing the material to be mixed from the top and the bottom while creating minimum shearing forces. This propeller stirrer is used at medium to high speeds.

Name	R 1381	R 1382	R 1401	R 1405
Ident. No.	1296000	1295900	1242900	1289800
Stirrer (Ø)	45 mm	55 mm	55 mm	45 mm
Shaft (Ø)	8 mm	8 mm	—	—
Shaft length	350 mm	350 mm	—	—



Propeller stirrer, 3-bladed

Flow-efficient design for drawing the material to be mixed from the top and the bottom while creating minimum shearing forces. This propeller stirrer is used at medium to high speeds.

Name	R 1385	R 1388	R 1389 (PTFE-coated)
Ident. No.	0477700	0477800	2343600
Stirrer (Ø)	140 mm	140 mm	75 mm
Shaft (Ø)	10 mm	10 mm	8 mm
Shaft length	550 mm	800 mm	350 mm



EUROSTAR 20 | 40
digital

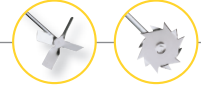


EUROSTAR 100
digital | control



EUROSTAR 200
digital | control





Turbine stirrer

This stirrer is used for drawing the material to be mixed from above while generating axial flow within the vessel. It carries a minimum level of danger of injury when contact is made with vessel. It also creates minimum shearing forces and is used at medium to high speeds.

Name	R 1311	R 1312	R 1313
Ident. No.	2332900	2333000	2333100
Stirrer (Ø)	30 mm	50 mm	70 mm
Shaft (Ø)	8 mm	8 mm	10 mm
Shaft length	350 mm	350 mm	400 mm
	(A) (F) (C)	(A) (B) (C) (D) (F)	(A) (B) (C) (D) (F)



Centrifugal stirrer

Two-bladed stirrer who's blades open with increasing speed. Perfect for stirring in round vessels with narrow necks and the effect is similar to that of a 4-bladed propeller stirrer. Medium to high speeds required.

Name	R 1352	R 1355
Ident. No.	0756900	1132700
Stirrer (Ø)	60 / 15 mm	100 / 24 mm
Shaft (Ø)	8 mm	8 mm
Shaft length	350 mm	550 mm
	(A) (B) (C) (D) (F)	(A) (B) (C) (D) (F)



Dissolver stirrer

This stirrer provides radial flow for drawing the material to be mixed from the top and the bottom while creating high turbulence and high shearing forces for particle reduction. Medium to high speeds required.

Name	R 1300	R 1302	R 1303	R 1402
Ident. No.	0513500	2387900	2746700	1243300
Stirrer (Ø)	80 mm	100 mm	42 mm	42 mm
Shaft (Ø)	8 mm	10 mm	8 mm	—
Shaft length	350 mm	350 mm	350 mm	—
	(A) (B) (C) (D) (F) (G)	(A) (B) (C) (D) (F) (G)	(A) (B) (C) (D) (F)	(E)



EUROSTAR 200
control P4

(D)



EUROSTAR 20 high speed digital | control

(E)



RW 20
digital

(F)



RW 28
digital

(G)



RW 47
digital

(H)





Overhead Stirrers | Accessories

Paddle stirrer



This stirrer creates tangential flow, minimum turbulence, good heat exchange and gentle treatment of the product. Low to medium speeds required.

Name	R 1375	R 1376	R 2311
Ident. No.	0757700	0757800	0739500
Stirrer (Ø)	70 mm	150 mm	150 mm
Shaft (Ø)	8 mm	10 mm	13 mm
Shaft length	550 mm	550 mm	800 mm



Anchor stirrer



This stirrer creates tangential flow, high shearing rate at the edges, minimum deposits on the vessel wall making them great for polymer reactions and even distribution of high mineral contents in liquids. Ideal for medium to highly viscous fluids. Low speeds required.

Name	R 1330	R 1331	R 1333
Ident. No.	2022300	2022400	2747400
Stirrer (Ø)	45 mm	90 mm	150 mm
Shaft (Ø)	8 mm	8 mm	10 mm
Shaft length	350 mm	350 mm	550 mm



Moebius stirrer



Generates axial flow. For drawing the material to be mixed from above. For circulating and handling low to medium viscous liquids. Used at medium speeds.

Name	R 3000.1	R 3001.1
Ident. No.	20001192	20001195
Stirrer (Ø)	100 mm	100 mm
Shaft (Ø)	10 mm	10 mm
Shaft length	565 mm	575 mm



EUROSTAR 20 | 40
digital



EUROSTAR 60
digital | control



EUROSTAR 100
digital | control



EUROSTAR 200
digital | control





Spiral stirrer

Generates axial flow. Medium is conveyed from the bottom upwards. For homogeneous mixing and heat exchange of medium to high viscosity media. Used at low to medium speeds.



Blade stirrer

Generates a radial flow. For drawing the material to be mixed from the top and bottom. For aerating of low viscosity media and for homogenizing solids in liquids. Used at medium to high speeds.

Name	R 3003	R 3003.1	R 3003.2
Ident. No.	20001203	20001204	20001205
Stirrer (Ø)	50 mm	100 mm	150 mm
Shaft (Ø)	8 mm	10 mm	10 mm
Shaft length	350 mm	550 mm	800 mm



Name	R 3004	R 3004.1	R 3004.2
Ident. No.	20001206	20001207	20001208
Stirrer (Ø)	30 mm	50 mm	70 mm
Shaft (Ø)	8 mm	8 mm	10 mm
Shaft length	359 mm	565 mm	819 mm



EUROSTAR 200
control P4

D



EUROSTAR 20 high speed digital | control

E



RW 20
digital

F



RW 28
digital

G



RW 47
digital

H





Accessories for EUROSTAR control series



EUROSTAR 20 high speed digital | control accessories

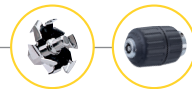
	Ident. No.
① R 1401 Propeller, Ø 55 mm	1242900
② R 1405 Propeller, Ø 45 mm	1289800
③ R 1402 Dissolver, Ø 42 mm	1243300

	Ident. No.
④ H 62.51* Temperature sensor, stainless steel, Ø 3 mm, 260 mm length	2735451
⑤ H 66.51* Temperature sensor, stainless steel, glass-coated, Ø 6 mm, 260 mm length	2735551
H 66.53* Temperature sensor, coated with SafeCoat, Ø 3 mm, 260 mm length	4499900
H 67.60 Temperature sensor, stainless steel, Ø 3 mm	25000215
H 67.61 Temperature sensor, stainless steel, Ø 3 mm, response time 0.9 = 4 s	20003865
⑥ H 70* Extension cable, 1 m	2735600
WH 11 Wall mount for WiCo	25001500
labworldsoft® Laboratory software	4720000

* For using the temperature sensors,
H 70 cable is required



Overhead Stirrers | Accessories



RW 47 digital accessories

	Ident. No.
⑦ R 303 Stirring shaft protection for RW 47 digital	30000257
⑧ SI 400 Safety switch	3294800
⑨ SI 472 Fixing device for R 472 stand	3264000
⑩ SI 474 Fixing device for R 474 and T 653 stand	3264400

RW 20 digital & EUROSTAR series accessories

	Ident. No.
⑪ FK 1 Flexible coupling, clamping range 6 – 10 mm	2336000
⑫ R 60 Keyless chuck for EUROSTAR 20 / 40 / 60 / 100 series	3889500
⑬ R 301 Stirring shaft protection, plexiglass	2603000
⑭ R 301.1 Support holder for R 301	2604000

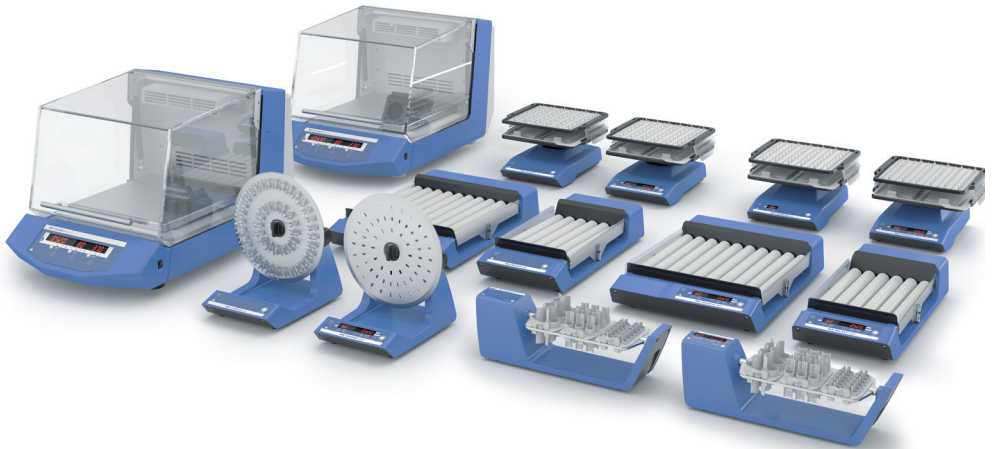


Shakers



IKA® offers a wide range of lab shakers for mixing and shaking applications. Products are equipped with digital display, timer function, and controlling options via the lab software labworldsoft®. Integrated end point positioning allows for automated sampling. An extensive array of attachments is available for the use of different vessels.





Sleek, compact, high-performance shaker

- > Controls with antimicrobial coating for reduction of bacteria
- > Electronic timer



Assure highly accurate temperature control



Orbital action



KS 3000
ic control



KS 4000
ic control



Built-in cooling coil for connection to an external cooling unit (available only for KS 3000 ic control)



Wide range of attachments allows using almost all shapes and sizes of vessels





Shakers



Technical data

Type of movement

Shaking diameter

Permissible shaking weight
(incl. attachment)

Motor rating input / output

Speed range

Speed display

Timer

Timer display

Dimensions (W x D x H)

Weight

Rocker 2D basic | digital

rocking

8° (angle) | 2.5 – 15° (angle)

2 kg

16 / 9 W

5 – 80 rpm

7 segment LED

no | ∞ / 1 s – 99.9 h

none | 7 segment LED

280 x 330 x 150 mm

2.2 kg

Ident. No. 4002000*

Ident. No. 4003000*

Rocker 3D basic | digital

tumbling

8° (angle) | 0 – 15° (angle)

2 kg

16 / 9 W

30 rpm (fixed) | 5 – 80 rpm

none | 7 segment LED

no | ∞ / 1 s – 99.9 h

none | 7 segment LED

280 x 330 x 165 mm | 280 x 330 x 185 mm

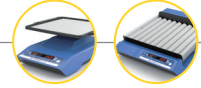
2.2 kg

Ident. No. 4000000*

Ident. No. 4001000*

* RD 1 Universal mat
included in the delivery
of all Rockers





**Roller 6
digital**

Timer
Display

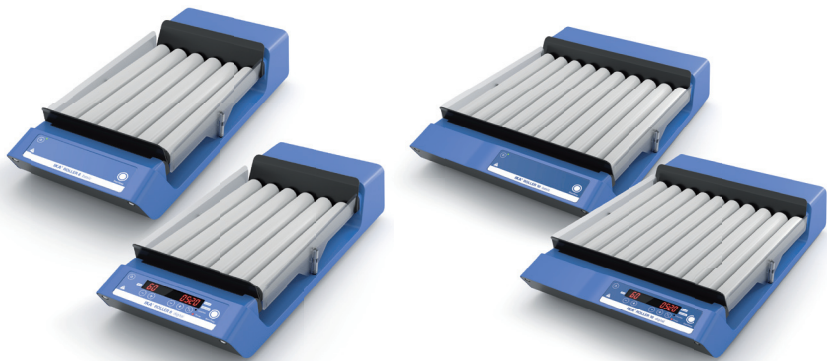
Timer display for accurate
and reproducible conditions



Touch keypad for
easy operation



C/T button for choosing the
counter or the timer function



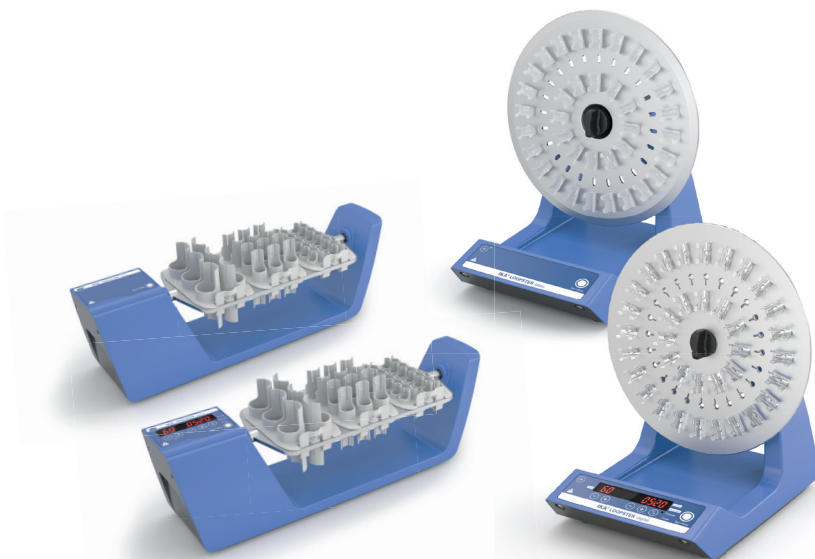
Technical data

	Roller 6 basic digital	Roller 10 basic digital
Type of movement	rocking and rolling	rocking and rolling
Shaking diameter	24.5 mm (high)	24.5 mm (high)
Permissible shaking weight (incl. attachment)	2 kg	2 kg
Motor rating input / output	16 / 9 W	16 / 9 W
Speed range	30 rpm (fixed) 5 – 80 rpm	30 rpm (fixed) 5 – 80 rpm
Speed display	none 7 segment LED	none 7 segment LED
Timer	no ∞ / 1 s – 99.9 h	no ∞ / 1 s – 99.9 h
Timer display	none 7 segment LED	none 7 segment LED
Dimensions (W x D x H)	240 x 545 x 115 mm	380 x 545 x 115 mm
Weight	4.5 kg	6 kg
	Ident. No. 4010000 Ident. No. 4011000	Ident. No. 4012000 Ident. No. 4013000





Shakers



Technical data

Type of movement

rotating

rotating

Permissible shaking weight
(incl. attachment)

2 kg

2 kg

Motor rating input / output

16 / 9 W

16 / 9 W

Speed range

20 rpm (fixed) | 5 – 80 rpm

20 rpm (fixed) | 5 – 80 rpm

Speed display

none | 7 segment LED

none | 7 segment LED

Timer

no | ∞ / 1 s – 99.9 h

no | ∞ / 1 s – 99.9 h

Timer display

none | 7 segment LED

none | 7 segment LED

Dimensions (W x D x H)

460 x 160 x 150 mm

300 x 300 x 360 mm

Weight

1.7 kg

3 kg

Ident. No. 4005000*

Ident. No. 4015000*

Ident. No. 4006000*

Ident. No. 4016000*

* Loopster and Trayster accessories
have to be ordered separately





Loopster
digital



Choice of tube holders to hold a number of different sized tubes



90 degree adjustable mixing angle



Touch keypad for easy operation



Rotating action



Timer display for accurate and reproducible conditions



Shakers

MS 3
digital



Ortibal action



Wide range of
attachments



Continuous or touch
operation



Technical data	VORTEX 1	lab dancer	MS 3 basic digital
Type of movement	orbital	orbital	orbital
Shaking diameter	4.5 mm	4.5 mm	4.5 mm
Permissible shaking weight (incl. attachment)	0.1 kg	max. 50 ml (1 test tube)	0.5 kg
Motor rating input / output	1.2 / 0.8 W	1.2 / 0.8 W	10 / 8 W
Speed range	1000 – 2800 rpm	2800 rpm (fixed)	0 – 3000 rpm
Speed display	none	none	scale digital
Timer display	none	none	none digital
Operating mode	touch operation	touch operation	continuous / touch operation timer and continuous / touch operation
Dimensions (W x D x H)	95 x 110 x 70 mm	100 x 70 mm (Ø x H)	148 x 205 x 63 mm
Weight	0.55 kg	0.55 kg	2.9 kg
Permissible ambient temp.	5 – 40 °C	5 – 40 °C	5 – 40 °C
Permissible relative moisture	80%	80%	80%
	Ident. No. 4047700	Ident. No. 3365000	Ident. No. 3617000 Ident. No. 3319000



VORTEX3



Orbital action



Wide speed range enables intensive mixing, even for small vessels



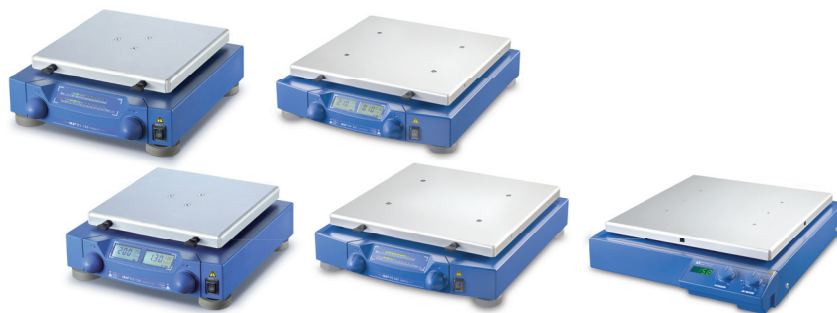
Different applications easily handled with interchangeable attachments and inserts



Technical data	VORTEX 3	VXR basic Vibrax®	MTS 2/4 digital Microtiter shaker
Type of movement	orbital	orbital	orbital
Shaking diameter	4 mm	4 mm	3 mm
Permissible shaking weight (incl. attachment)	0.4 kg	2 kg	2 or 4 microtiter plates (MTP)
Motor rating input / output	58 / 10 W	35 / 13.2 W	35 / 13.2 W
Speed range	500 – 2500 rpm	0 – 2200 rpm	0 – 1100 rpm
Speed display	scale (0 – 6)	scale	scale
Timer	none	none	∞ / 1 – 99 min
Operating mode	continuous / touch operation	continuous operation	timer and continuous operation
Dimensions (W x D x H)	127 x 149 x 136 mm	157 x 247 x 130 mm	185 x 320 x 105 mm
Weight	4.5 kg	6.1 kg	2.7 kg
Permissible ambient temp.	5 – 40 °C	5 – 40 °C	5 – 40 °C
Permissible relative moisture	80%	80%	80%
	Ident. No. 3340000	Ident. No. 2819000	Ident. No. 3208000



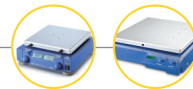
Shakers



Technical data	KS 130 basic control (NOL*)	HS 260 basic control (NOL*)	HS 501 digital
Type of movement	orbital	reciprocating	reciprocating
Shaking diameter	4 mm	20 mm	30 mm
Permissible shaking weight (incl. attachment)	2 kg	7.5 kg	15 kg
Motor rating input / output	45 / 10 W	45 / 10 W	70 / 19 W
Permissible ON time	100 %	100 %	100 %
Speed range	0 – 800 rpm	0 – 300 rpm 10 – 300 rpm	0 – 300 rpm
Speed display	LED line	LED line digital	digital
Timer	∞ / 5 – 50 min ∞ / 0 – 9 h 59 min	∞ / 5 – 50 min ∞ / 0 – 9 h 59 min	∞ / 1 – 56 min
Operating mode	timer and continuous operation	timer and continuous operation	timer and continuous operation
Dimensions (W x D x H)	270 x 316 x 98 mm	360 x 420 x 100 mm	505 x 585 x 120 mm
Weight	8.8 kg	8.5 kg 8.8 kg	26 kg
Permissible ambient temp.	5 – 50 °C	5 – 50 °C	5 – 50 °C
Permissible relative moisture	80%	80%	80%
	KS 130 basic Ident. No. 2980000	HS 260 basic Ident. No. 3066600	Ident. No. 2527000
	KS 130 control Ident. No. 2980100	HS 260 control Ident. No. 3066700	
	KS 130 control NOL* Ident. No. 4278200	HS 260 control NOL* Ident. No. 4278600	

Package details
on page 159

* No End-point positioning



Wide range of attachment combinations



Orbital action



Digital display allows reading of speed, timer function and operating modes



All functions can be controlled and documented with labworldsoft®



Technical data

Type of movement
Shaking diameter
Permissible shaking weight (incl. attachment)
Motor rating input / output
Permissible ON time
Speed range
Speed display
Timer
Timer display
Operating mode
Dimensions (W x D x H)
Weight
Permissible ambient temp.
Permissible relative moisture

KS 260 basic | control (NOL*)

orbital
10 mm
7.5 kg
45 / 10 W
100%
20 – 500 rpm 10 – 500 rpm
LED line digital
∞ / 5 – 50 min ∞ / 0 – 9 h 59 min
LED line digital
timer and continuous operation
360 x 420 x 98 mm
8.5 kg 8.8 kg
5 – 50 °C
80%

KS 260 basic
Ident. No. 2980200

KS 260 control
Ident. No. 2980300

KS 260 control NOL*
Ident. No. 4278400

KS 501 digital

orbital
30 mm
15 kg
70 / 19 W
100%
0 – 300 rpm
digital
∞ / 1 – 56 min
digital
timer and continuous operation
505 x 585 x 120 mm
26 kg
5 – 50 °C
80%

Ident. No. 2526400

Package details
on page 159

* No End-point positioning





Incubator Shakers



Technical data

	KS 3000 i control ic control	KS 4000 i control ic control
Type of movement	orbital	orbital
Shaking diameter	20 mm	20 mm
Permissible shaking weight (incl. attachment)	7.5 kg	20 kg
Motor rating input / output	45 / 10 W	82 / 24 W
Permissible ON time	100%	100%
Speed range	10 – 500 rpm	10 – 500 rpm
Speed display	LED	LED
Timer	1 s – 999 h	1 s – 999 h
Timer display	LED	LED
Operating mode	timer and continuous operation	timer and continuous operation
Dimensions (W x D x H)	465 x 430 x 695 mm	580 x 525 x 750 mm
Weight	35 kg 37 kg	50 kg 55 kg
Permissible ambient temp.	15 – 32 °C	15 – 32 °C
Permissible relative moisture	80%	80%
	Ident. No. 3940000	Ident. No. 3510000
	Ident. No. 3940100	Ident. No. 3510100





**KS 3000
ic control**

**KS 4000
ic control**



Assure highly accurate
temperature control



Orbital action



Built-in cooling coil for connection
to an external cooling unit
(available only for KS 3000 ic
/ KS 4000 ic control)



Wide range of attachments
allows using almost all
shapes and sizes of vessels

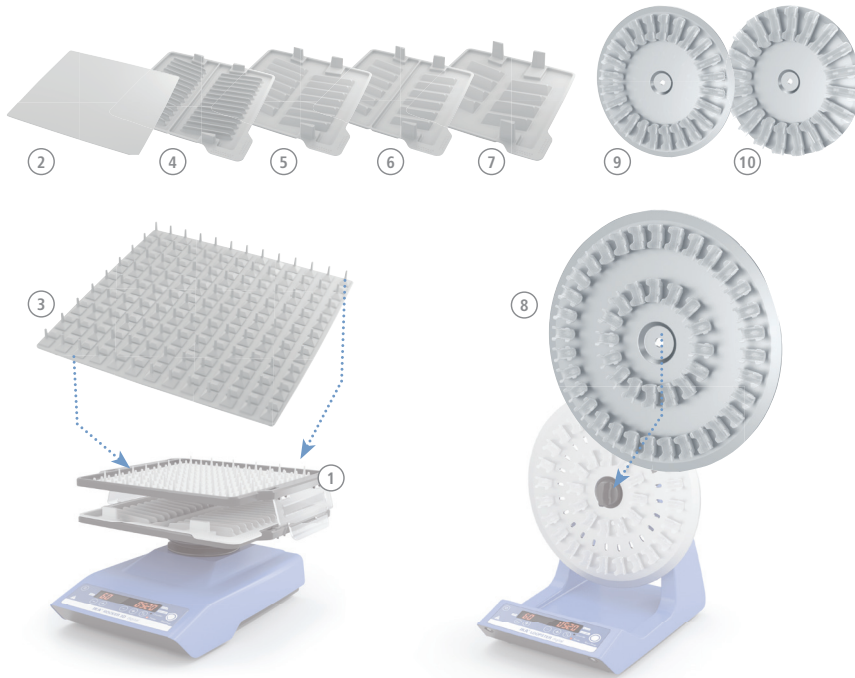


USB interface to control and
document all parameters using
labworldsoft® software and for
updating your firmware





Shakers | Accessories



Rocker accessories

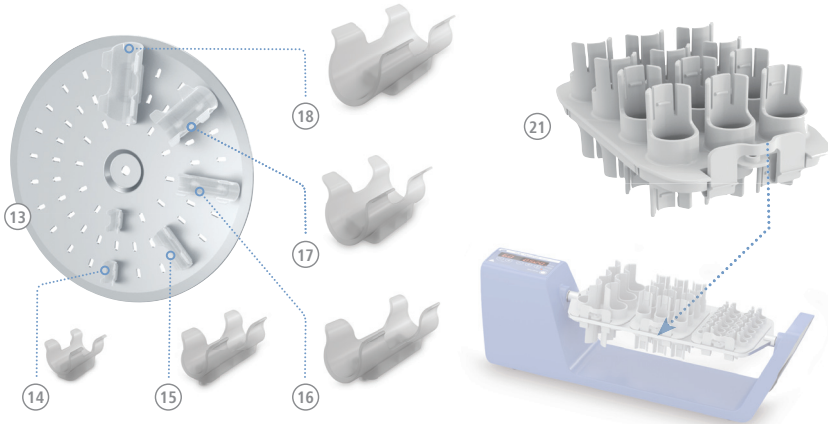
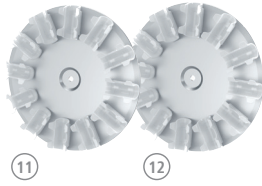
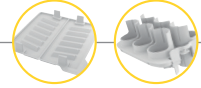
	Ident. No.
① A 2 Second level attachment	4581700
② RD 1* Universal mat	4532000
③ RD 2 Burled mat	4532100
④ TB 1 Tray, 28 x 5 ml, Ø 12 mm	4532200
⑤ TB 2 Tray, 16 x 15 ml, Ø 16 mm	4532300
⑥ TB 3 Tray, 14 x 30 ml, Ø 25 mm	4532400
⑦ TB 4 Tray, 10 x 50 ml, Ø 28 mm	4532500

* Included in the delivery

Loopster accessories

	Ident. No.
⑧ DS 1 Tube attachment, 48 x 1.5 ml, Ø 10 mm	4524000
⑨ DS 2 Tube attachment, 24 x 5 ml, Ø 12 mm	4524100
⑩ DS 3 Tube attachment, 20 x 15 ml, Ø 16 mm	4524200
⑪ DS 4 Tube attachment, 12 x 30 ml, Ø 25 mm	4524300
⑫ DS 5 Tube attachment, 12 x 50 ml, Ø 28 mm	4524400
⑬ DS 6 Universal disc	4524500





- ⑭ DS 6.1 4524600
Spare clips, Ø 10 mm, 12 pcs.
- ⑮ DS 6.2 4524700
Spare clips, Ø 12 mm, 12 pcs.
- ⑯ DS 6.3 4524800
Spare clips, Ø 16 mm, 12 pcs.
- ⑰ DS 6.4 4524900
Spare clips, Ø 25 mm, 12 pcs.
- ⑱ DS 6.5 4525000
Spare clips, Ø 28 mm, 12 pcs.

Trayster accessories

- | | Ident. No. |
|---|------------|
| ⑲ TR 1
Tube insert, 24 x 1.5 ml, Ø 10 mm | 4525100 |
| ⑳ TR 2
Tube insert, 24 x 5 ml, Ø 12 mm | 4525200 |
| ㉑ TR 3
Tube insert, 12 x 15 ml, Ø 16 mm | 4525300 |
| ㉒ TR 4
Tube insert, 6 x 50 ml, Ø 28 mm | 4525400 |





Shakers | Accessories

MS 3 basic / digital accessories

	Ident. No.
MS 3.1	3426300

Standard attachment



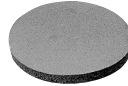
MS 3.3	3426600
--------	---------

Universal attachment



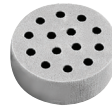
MS 1.21	L001540
---------	---------

One-hand insert



MS 1.31	L001840
---------	---------

Test tube insert, 14 x Ø 10 mm



MS 1.32	L001850
---------	---------

Test tube insert, 6 x Ø 12 mm



MS 1.33	L001860
---------	---------

Test tube insert, 4 x Ø 16 mm



MS 1.34	L001830
---------	---------

Test tube insert, without holes



MS 3.4	3426400
--------	---------

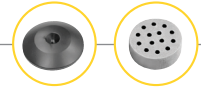
Microtiter plate attachment



MS 3.5	3428000
--------	---------

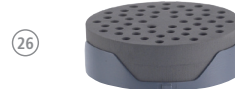
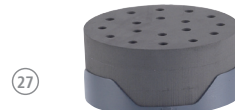
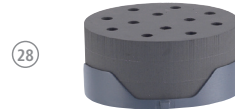
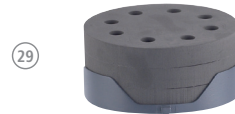
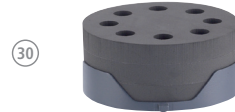
PCR plate attachment, 96-well





VORTEX 3 accessories

	Ident. No.
23 VG 3.1 Standard attachment	3341200
24 VG 3.2 One-hand attachment, 88 mm	3342300
VG 3.21 Rubber pad, for VG 3.2 One-hand attachment	4206500
25 VG 3.3 Universal attachment, 150 mm	3342400
26 VG 3.31* Test tube attachment for 54 Eppendorf tubes	3344300
27 VG 3.32* Test tube attachment, 18 x Ø 10 mm	3343900
28 VG 3.33* Test tube attachment, 12 x Ø 12 mm	3344000
29 VG 3.34* Test tube attachment, 8 x Ø 16 mm	3344100
30 VG 3.35* Test tube attachment, 8 x Ø 20 mm	3344200
31 VG 3.36* Erlenmeyer flask attachment, 100 – 250 ml	3342100
32 VG 3.37* Microtiter plate attachment	3344400

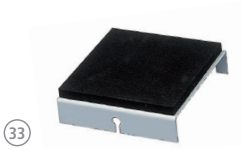


* Used with VG 3.3 Universal Attachment, ordered seperately

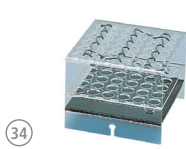




Shakers | Accessories



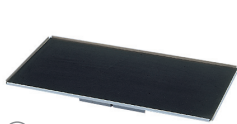
33



34



35



36



37



38



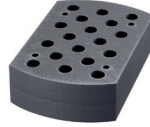
39



40



41



42



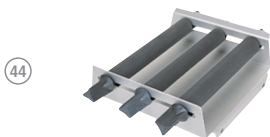
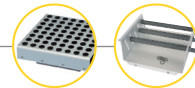
43

VXR basic accessories

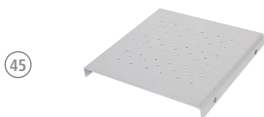
	Ident. No.
33 VX 1	0607200
One-hand attachment, 1 – 250 ml	
34 VX 2	0568900
Test tube attachment, 36 x Ø 16 mm	
35 VX 2E	1618100
Eppendorf attachment, 64 x 1.5 ml	
36 VX 7	0953300
Dish attachment, 410 x 210 mm	
37 VX 8	0910400
Universal attachment, 265 x 136 mm	

38 VX 11	3627700
Basic holder	
39 VX 11.1	3659000
Test tube insert, 70 x Ø 10 mm	
40 VX 11.2	3659100
Test tube insert, 41 x Ø 12 mm	
41 VX 11.3	3659200
Test tube insert, 32 x Ø 16 mm	
42 VX 11.4	3659300
Test tube insert, 18 x Ø 20 mm	
43 VX 8.1	3375400
Clamping roll	





44



45



46



47



48



49



50



51

KS 130 basic / control accessories

Ident. No.

- 44 AS 130.1 8017300
Universal attachment, set-up plate 220 x 220 mm
- 45 AS 130.2 3115000
Fixing clip attachment, set-up plate 230 x 230 mm
- 46 AS 130.3 3120000
Dish attachment, set-up plate 220 x 340 mm
- 47 AS 130.4 3120300
Test tube attachment, 64 x Ø 10 – 16 mm

KS / HS 260 basic / control and KS 3000 accessories

Ident. No.

- 48 AS 260.1 8017400
Universal attachment, set-up plate 320 x 320 mm
- 49 AS 260.2 3115500
Fixing clip attachment, set-up plate 330 x 330 mm
- 50 AS 260.3 3120600
Dish attachment, set-up plate 320 x 320 mm
- 51 AS 260.5 3120900
Separating funnel attachment





KS / HS 501 digital accessories

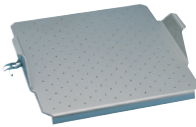
	Ident. No.
AS 501.1	8000200

Universal attachment, set-up plate 420 x 420 mm



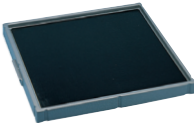
AS 501.4	2341100
----------	---------

Fixing clip attachment, set-up plate 450 x 450 mm



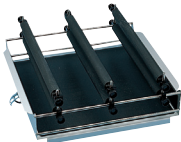
AS 501.5	2339600
----------	---------

Dish attachment, set-up plate 420 x 420 mm



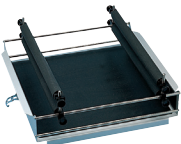
AS 501.2	8000300
----------	---------

Separating funnel attachment, 480 x 505 x 190 mm



AS 501.3	8000400
----------	---------

Separating funnel attachment, 480 x 505 x 190 mm



AS 501.6	8000500
----------	---------

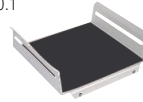
Separating funnel attachment, 480 x 505 x 225 mm



Other accessories

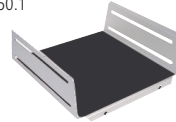
	Ident. No.
AS 1.30	3148000

Basic holder for AS 130.1



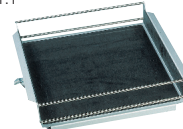
AS 1.60	3149000
---------	---------

Basic holder for AS 260.1



AS 1.10	2339700
---------	---------

Basic holder for AS 501.1



AS 1.31 AS 1.61 AS 1.11	3030500
	3030501
	2339800

Clamping roll for AS 130.1, AS 260.1, AS 501.1



AS 1.6	1268400
--------	---------

Clamping device for AS 501.1



AS 1.7	1269200
--------	---------

Clamping device for AS 501.1



AS 1.8	1268900
--------	---------

Supporting clamping device for AS 501.1



AS 1.12	2594500
---------	---------

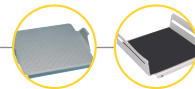
Supporting bar for AS 1.10



AS 1.13	2597000
---------	---------

Ground section holder for AS 1.10





Shakers | Accessories

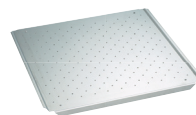
IKA⁺

STICKMAX
Universal adhesive mat,
200 x 200 mm

Ident. No. 3920000




52



53



Ident. No.

AS 2.1

1234300

Fixing clips, 25 ml



AS 2.2

1234400

Fixing clips, 50 ml



AS 2.3

1234500

Fixing clips, 100 ml



AS 2.4

1234600

Fixing clips, 200 / 250 ml



AS 2.5

1234700

Fixing clips, 500 ml



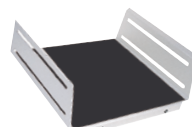
AS 2.6

3819300

Fixing clips, 1000 ml



54



55



56



57

KS 4000 accessories | ic control accessories

Ident. No.

52 AS 4000.1 8022200

Universal attachment, set-up plate 380 x 410 mm

53 AS 4000.2 3710100

Fixing clip attachment, set-up plate 430 x 430 mm

54 AS 4000.3 3710000

Dish attachment, set-up plate 430 x 430 mm

55 AS 1.400 3710200

Basic holder for AS 4000.1

56 AS 1.401 3712000

Clamping roll for AS 4000.1

57 AS 1.402 3712300

Fastening screw for AS 4000.1





Dispersers



IKA®'s ULTRA-TURRAX® – used for homogenizing, emulsifying or suspending. The digital display allows you to keep track of the speed and the development of the products focused on a soft start of the motor. There is a broad spectrum of dispersing tools to choose from. Common disperser applications include: homogenization of effluent samples, dispersing tasks under vacuum pressure, and PCR analysis.





reddot design award
winner 2012

reddot design award
winner 2012

reddot design award
winner 2012

Patented

High-performance dispersing instrument!

- > Work at high circumferential speeds
- > Enables the best possible results for any application



reddot design award
winner 2012

T 25
digital



Digital display for precise monitoring of set and actual speeds



Wide selection of dispersing tools to suit your application



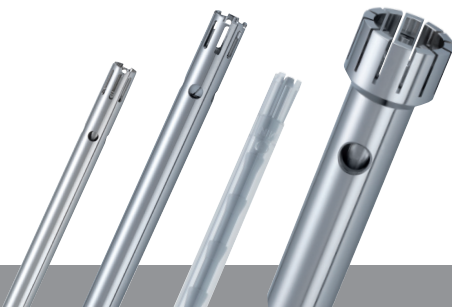
Rotating knob for adjusting the speed



Motor protection against overload



Quick-connect coupling to exchange dispersing tools easily





ULTRA-TURRAX® Tube Drive

Patented



UTTD ULTRA-TURRAX® Tube Drive

Technical data

Motor rating input / output

20 / 17 W

Speed range / Turbo speed

300 – 6000 rpm / –

Display / Speed display

LED (timer) / scale

Timer

1 s – 29 min

Reverse rotation interval

–

Dimensions (W x D x H)

100 x 160 x 40 mm

Weight

0.75 kg

Protection class DIN EN 60529

IP 20

Interface

yes

Voltage

100 – 240 V

Frequency

50/60 Hz

Ident. No. 3646000

ULTRA-TURRAX® Tube Drive control

20 / 17 W

400 – 6000 rpm / 8000 rpm

OLED / digital

10 s – 30 min (infinitely adjustable)

10 – 60 s

122 x 178 x 54 mm

1.0 kg

IP 20

yes

100 – 240 V

50/60 Hz

Ident. No. 4135300



UTTD Workstation

Included with delivery

ULTRA-TURRAX® Tube Drive

1

ST-20 Tube with stirring device

2

DT-20 Tube with rotor-stator element

2

BMT-20 G / S Tube for grinding with glass (G) or stainless steel balls (S)

2

Removal hook for removal of rotor-stator

1

Power supply

1

Ident. No. 3645000

ULTRA-TURRAX® Tube Drive control Workstation

1

1

1

2

1

1

Ident. No. 3827500





No cleaning efforts
No cross-contamination
Reproducible test results

Tube Drive control



reddot design award
winner 2012



Turbo function for short time intensive mixing, homogenizing or grinding



Built-in program library for tests to be repeated under identical conditions



Reverse rotation switch to optimize mixing and crushing performance



Multilingual OLED display for simple and precise menu navigation



USB interface to control and document all the parameters using labworldsoft® software and for updating your firmware



▶ THE TUBE: UTTD control

Watch the video now:
www.ika.com/video





ULTRA-TURRAX® Tube Drive | Accessories



ST Tube with stirring devices

	Ident. No.
ST-20 (pack of 25)	3703000
ST-20-M-gamma (pack of 20)	3700500
ST-50 (pack of 10)	3699500
ST-50-M (pack of 10)	3629500
ST-50-M-gamma (pack of 10)	3701500



DT Tube with rotor-stator element

	Ident. No.
DT-20 (pack of 25)*	3703100
DT-20-M-gamma (pack of 20)*	3700600
DT-20 eco (pack of 25)**	20003207
DT-50 (pack of 10)*	3699600
DT-50-M (pack of 10)*	3629600
DT-50-M-gamma (pack of 10)*	3701600
DT-50 eco (pack of 10)**	20003213

* Rotor-stator element made with PEEK

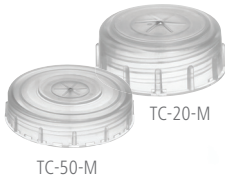
** Rotor-stator element made with PSU



BMT-S/G Tube for grinding with stainless steel (S) or glass (G) balls

	Ident. No.
BMT-20-S (pack of 25)	3703200
BMT-20-G (pack of 25)	3703300
BMT-20-S-M-gamma (pack of 20)	3700700
BMT-50-S (pack of 10)	3699700
BMT-50-G (pack of 10)	3699800
BMT-50-S-M (pack of 10)	3629700
BMT-50-G-M (pack of 10)	3629800
BMT-50-S-M-gamma (pack of 10)	3701700





Cover for BMT tube

	Ident. No.
TC-50; for 50 ml tubes (10 pcs.)	3749800
TC-20-M; with pierceable membrane for 20 ml tubes (25 pcs.)	3749900
TC-50-M; with pierceable membrane for 50 ml tubes (10 pcs.)	3750000

Balls for BMT tube

	Ident. No.
Glass balls Ø 6 mm (250 g)	3599200
Stainless steel balls Ø 5 mm (250 g)	3599300



T-series ULTRA-TURRAX® Dispersers



reddot design award
winner 2012



reddot design award
winner 2012



PCR kit

Dispersing tools are not included in delivery

Technical data

Motor rating input / output
Volume range (H₂O)
Viscosity max.
Speed range
Speed display
Speed control
Noise without element
Extension arm diameter
Extension arm length
Process type
Dimensions (W x D x H)
Weight
Perm. ambient temperature
Permissible relative moisture
Protect. class DIN EN 60529
Interface
Voltage
Frequency

T 10 basic
T 10 standard PCR kit

125 / 75 W
0.5 – 100 ml
5000 mPas
8000 – 30,000 rpm |
8000 – 26,000 rpm

scale
stepless
65 dB(A)
8 mm
130 mm
batch
56 x 66 x 178 mm
0.5 kg
5 – 40 °C
80 %
IP 30
no

230 V
50/60 Hz

T 10 basic
Ident. No. 3737000
T 10 PCR kit
Ident. No. 4095500

T 18 digital

500 / 300 W
1 – 1500 ml
5000 mPas
3000 – 25,000 rpm

LED
stepless
75 dB(A)
13 mm
160 mm
batch
87 x 106 x 271 mm
2.5 kg
5 – 40 °C
80 %
IP 20
no

200 – 240 V
50/60 Hz

T 18 digital
Ident. No. 3720000

T 25 digital

800 / 500 W
1 – 2000 ml
5000 mPas
3000 – 25,000 rpm

LED
stepless
75 dB(A)
13 mm
160 mm
batch
87 x 106 x 271 mm
2.5 kg
5 – 40 °C
80 %
IP 20
no

200 – 240 V
50/60 Hz

Ident. No. 3725000

Package details
on page 159



Watch the video:
www.ika.com/video



Dispersing tools are not included in delivery

Technical data

	T 50 digital	T 65 basic	T 65 digital
Motor rating input / output	1100 / 700 W	1800 / 1500 W	2600 / 2200 W
Volume range (H ₂ O)	0.25 – 30 l	2 – 50 l	2 – 50 l
Viscosity max.	5000 mPas	5000 mPas	5000 mPas
Speed range	600 – 10,000 rpm	7200 rpm (fixed)	1000 – 9500 rpm
Speed display	LED	–	LED
Speed control	stepless	fixed	stepless
Noise without element	72 dB(A)	75 dB(A)	75 dB(A)
Extension arm diameter	16 mm	flange	flange
Extension arm length	220 mm	flange	flange
Process type	batch	batch	batch
Dimensions (W x D x H)	115 x 139 x 355 mm	185 x 400 x 450 mm	300 x 400 x 390 mm
Weight	5.76 kg	26 kg	29 kg
Perm. ambient temperature	5 – 40 °C	5 – 40 °C	5 – 40 °C
Permissible relative moisture	80 %	80 %	80 %
Protect. class DIN EN 60529	IP 20	IP 54	IP 54
Interface	no	no	no
Voltage	200 – 240 V	3 x 400 / 3 x 230 V	3 x 400 / 3 x 230 V
Frequency	50/60 Hz	50 Hz	50/60 Hz

Ident. No. 3787000

Ident. No. 4023500

T 65 basic Package

Ident. No. 9023400

Ident. No. 4234500

T 65 digital Package

Ident. No. 9023500

Package details
on page 159





Dispersing tools



T 10 basic

Dispersing element	S 10 N – 5 G
Ident. No.	3304000
Working range	0.5 – 10 ml
Stator diameter	5 mm
Rotor diameter	3.8 mm
Gap between rotor and stator	0.1 mm
Min. / max. immersion depth	20 / 75 mm
Shaft length	92 mm
Materials in contact with medium	PTFE, AISI 316L

pH range	2 – 13
Suitable for solvents	yes
Max. temperature	180 °C
Sterilization methods	all methods

③

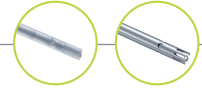
T 18 digital

Dispersing element	S 18 N – 10 G
Ident. No.	L004639
Working range	1 – 100 ml
Stator diameter	10 mm
Rotor diameter	7.5 mm
Gap between rotor and stator	0.35 mm
Min. / max. immersion depth	25 / 70 mm
Shaft length	108 mm
Materials in contact with medium	PTFE, AISI 316L

pH range	2 – 13
Suitable for solvents	yes
Max. temperature	180 °C
Sterilization methods	all methods

⑧





Dispersing element	T 10 basic	
	S 10 N – 8 G – ST	S 10 N – 10 G – ST
Ident. No.	4446500	4446700
Working range	1 – 50 ml	1 – 100 ml
Stator diameter	8 mm	10 mm
Rotor diameter	6.1 mm	7.6 mm
Gap between rotor and stator	0.25 mm	0.2 mm
Min. / max. immersion depth	20 / 95 mm	20 / 100 mm
Shaft length	115 mm	115 mm
Materials in contact with medium	PTFE, AISI 316L	PTFE, AISI 316L

①

②

S 10 N – 8 G	S 10 N – 10 G	S 10 D – 7 G – KS – 65	S 10 D – 7 G – KS – 110
3305500	3370100	20002076 (24 pcs.)	20002075 (24 pcs.)
1 – 50 ml	1 – 100 ml	1 – 20 ml	1 – 40 ml
8 mm	10 mm	7 mm	7 mm
6.1 mm	7.6 mm	4.8 mm	4.8 mm
0.25 mm	0.2 mm	0.3 mm	0.3 mm
20 / 95 mm	20 / 100 mm	20 / 50 mm	20 / 90 mm
115 mm	115 mm	65 mm	110 mm
PTFE, AISI 316L	PTFE, AISI 316L	Polycarbonate (PC) Polysulfon (PSU)	Polycarbonate (PC) Polysulfon (PSU)
2 – 13	2 – 13	–	–
yes	yes	–	–
180 °C	180 °C	100 °C	100 °C
all methods	all methods	yes, autoclavable	yes, autoclavable

④

⑤

⑥

⑦

S 18 N – 19 G	S 18 D – 10 G – KS	S 18 D – 14 G – KS
L004640	3452400 (12 pcs.)	3452300 (12 pcs.)
10 – 1500 ml	10 – 100 ml	10 – 500 ml
19 mm	10 mm	14 mm
12.7 mm	6.75 mm	9.5 mm
0.4 mm	0.25 mm	0.35 mm
35 / 170 mm	15 / 85 mm	15 / 85 mm
204 mm	150 mm	150 mm
PTFE, AISI 316L	Polycarbonate (PC) Polyetheretherketon (PEEK)	Polycarbonate (PC) Polyetheretherketon (PEEK)
2 – 13	–	–
yes	–	–
180 °C	100 °C	100 °C
all methods	yes, autoclavable	yes, autoclavable

⑨

⑩

⑪

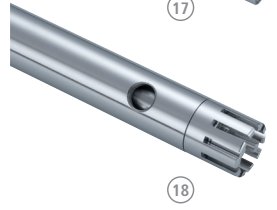
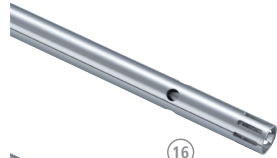
Disposable tube**S 18 / 25-ET50**

For attaching onto plastic tools from S 18 D and S 25 D series.

Ident. No. 3452500

Material PP





Dispersing element

Ident. No.	
Working range	
Stator diameter	
Rotor diameter	
Gap between rotor and stator	
Min. / max. immersion depth	
Shaft length	
Materials in contact with medium	

T 25 digital

Dispersing element	S 25 N – 8 G
Ident. No.	1024200
Working range	1 – 50 ml
Stator diameter	8 mm
Rotor diameter	6.1 mm
Gap between rotor and stator	0.25 mm
Min. / max. immersion depth	27 / 85 mm
Shaft length	108 mm
Materials in contact with medium	PTFE, AISI 316L
pH range	2 – 13
Suitable for solvents	yes
Max. temperature	180 °C
Sterilization methods	all methods
Min. vacuum	–
Max. pressure	–





Dispersing tools

IKA®+

Saw Tooth (ST) dispersing tools

- > ST tools are recommended to use with tissue and other fibrous materials
- > Saw tooth designs create a cutting and tearing action for shredding fibrous materials
- > Made of high quality stainless steel



T 25 digital

S 25 N – 8 G – ST	S 25 N – 10 G – ST	S 25 N – 18 G – ST	S 25 N – 25 G – ST
4446900	4447100	4447300	4447500
1 – 50 ml	1 – 100 ml	10 – 1500 ml	50 – 2000 ml
8 mm	10 mm	18 mm	25 mm
6.1 mm	7.5 mm	13.4 mm	20 mm
0.25 mm	0.35 mm	0.3 mm	0.5 mm
27 / 85 mm	22 / 85 mm	40 / 165 mm	40 / 165 mm
108 mm	105 mm	194 mm	194 mm
PTFE, AISI 316L	PTFE, AISI 316L	PTFE, AISI 316L	PTFE, AISI 316L

12

13

14

15

S 25 N – 10 G	S 25 N – 18 G	S 25 KV – 18 G	S 25 NK – 19 G
0594000	0593400	2348000	2494700
1 – 100 ml	10 – 1500 ml	10 – 1500 ml	25 – 1500 ml
10 mm	18 mm	18 mm	19 mm
7.5 mm	12.7 mm	12.7 mm	12.7 mm
0.35 mm	0.3 mm	0.3 mm	0.3 mm
22 / 85 mm	40 / 165 mm	40 / 225 mm	40 / 165 mm
105 mm	194 mm	270 mm	194 mm
PTFE, AISI 316L	PTFE, AISI 316L	FFPM / SIC, AISI 316L	PTFE, AISI 316L
2 – 13	2 – 13	2 – 13	2 – 13
yes	yes	yes	yes
180 °C	180 °C	220 °C	120 °C
all methods	all methods	wet chemical	wet chemical
–	–	1 mbar	–
–	–	6 bar	–

17

18





Dispersing tools

Dispersing element

Ident. No.

Working range

Stator diameter

Rotor diameter

Gap between rotor and stator

Min. / max. immersion depth

Shaft length

Materials in contact with medium

pH range

Suitable for solvents

Max. temperature

Sterilization methods

Min. vacuum

Max. pressure

T 25 digital

S 25 N – 25 G

1713300

50 – 2000 ml

25 mm

17 mm

0.5 mm

40 / 165 mm

194 mm

PTFE, AISI 316L

S 25 KV – 25 G

2466900

50 – 2000 ml

25 mm

17 mm

0.5 mm

40 / 225 mm

270 mm

FFPM / SIC, AISI 316L

2 – 13

yes

180 °C

all methods

–

–

2 – 13

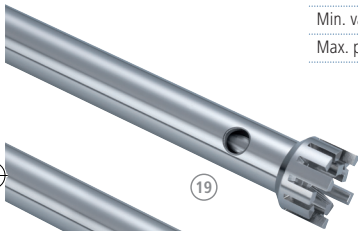
yes

220 °C

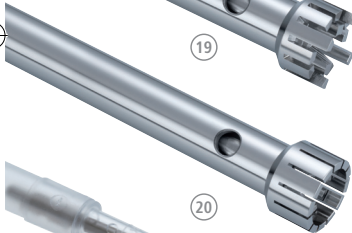
wet chemical

1 mbar

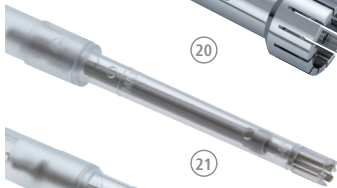
6 bar



19



20



21



22



19

T 25 digital

Dispersing element

Ident. No.

Working range

Stator diameter

Rotor diameter

Gap between rotor and stator

Min. / max. immersion depth

Shaft length

Materials in contact with medium

pH range

Suitable for solvents

Max. temperature

Sterilization methods

Min vacuum

S 25 – KR – 18 G

20002971

10 – 1500 ml

18 mm

12.7 mm

0.3 mm

40 – 185 mm

194 mm

FKM, PTFE, AISI 316L

2 – 13

no

110 °C

wet chemical

50 mbar

Silentstream

The flow breaker is used to prevent vortexing and to minimize air induction into the medium.

Ident. No. 3754000

Fits the following dispersing elements:

S 25 N – 18 G

S 25 N – 25 G

S 25 N – 25 F

S 25 NK – 19 G

S 25 KV – 18 G

S 25 KV – 25 G

S 25 KV – 25 F

S 18 N – 19 G





S 25 N – 25 F	S 25 KV – 25 F	S 25 D – 10 G – KS	S 25 D – 14 G – KS
1713800	2404000	3452200 (12 pcs.)	3452100 (12 pcs.)
100 – 2000 ml	100 – 2000 ml	10 – 100 ml	10 – 500 ml
25 mm	25 mm	10 mm	14 mm
18 mm	18 mm	6.75 mm	9.5 mm
0.5 mm	0.5 mm	0.25 mm	0.35 mm
40 / 165 mm	40 / 225 mm	15 / 85 mm	15 / 85 mm
194 mm	270 mm	150 mm	150 mm
PTFE, AISI 316L	FFPM / SIC, AISI 316L	Polycarbonate (PC) Polyetheretherketon (PEEK)	Polycarbonate (PC) Polyetheretherketon (PEEK)
2 – 13	2 – 13	–	–
yes	yes	–	–
180 °C	180 °C	100 °C	100 °C
all methods	all methods	yes, autoclavable	yes, autoclavable
–	–	–	–
–	–	–	–

(20)

(21)

(22)

S 25 – KR – 25 G	S 25 – KR – 18 G – ST	S 25 – KR – 25 G – ST	S 25 – KR – 25 F
20002972	20002973	20002974	20002975
50 – 2000 ml	10 – 1500 ml	50 – 2000 ml	100 – 2000 ml
25 mm	18 mm	25 mm	25 ml
17 mm	13.4 mm	20 mm	18 mm
0.5 mm	0.25 mm	0.5 mm	0.5 mm
40 – 185 mm	40 – 185 mm	40 – 185 mm	40 – 185 mm
194 mm	194 mm	194 mm	194 mm
FKM, PTFE, AISI 316L	FKM, PTFE, AISI 316L	FKM, PTFE, AISI 316L	FKM, PTFE, AISI 316L
2 – 13	2 – 13	2 – 13	2 – 13
no	no	no	no
110 °C	110 °C	110 °C	110 °C
wet chemical	wet chemical	wet chemical	wet chemical
50 mbar	50 mbar	50 mbar	50 mbar

TS 25-3

Cleaning tool for cleaning three dispersing elements.
The cleaning tool consists of an aluminum stand, three cleaning tubes (PP) and three covers with openings (PP).

Ident. No. 20003013

Material tubes	PP
Material lid	PP
Material stand	aluminum anodized

Fits the following dispersing elements:

S 25 N – 18 G / 18 G – ST
S 25 N – 25 G / F / 25 G – ST
S 25 KR – 18 G / 18 G – ST
S 25 KR – 25 G / 25 F / 25 G – ST
S 25 KV – 18 G / 25 G / 25 F





Dispersing tools



Dispersing element

Ident. No.

Working range

Stator diameter

Rotor diameter

Gap between rotor and stator

Min. / max. immersion depth

Shaft length

Min. vacuum

Max. pressure

Materials in contact with medium

pH range

Suitable for solvents

Max. temperature

Sterilization methods

T 50 digital

Dispersing element	S 50 N – G 45 G	S 50 N – G 45 M	S 50 N – G 45 F	S 50 N – G 45 G – ST
Ident. No.	8003000	8003300	8003900	8039500
Working range	0.5 – 20 l	0.5 – 15 l	0.25 – 10 l	0.5 – 20 l
Stator diameter	45 mm	45 mm	45 mm	45 mm
Rotor diameter	36 mm	40.5 mm	40 mm	36 mm
Gap between rotor and stator	0.5 mm	0.25 mm	0.5 mm	0.5 mm
Min. / max. immersion depth	70 / 250 mm	70 / 250 mm	70 / 250 mm	70 / 250 mm
Shaft length	300 mm	290 mm	290 mm	300 mm
Materials in contact with medium	PTFE, AISI 316L	PTFE, AISI 316L	PTFE, AISI 316L	PTFE, AISI 316L
pH range	2 – 13	2 – 13	2 – 13	2 – 13
Suitable for solvents	yes	yes	yes	yes
Max. temperature	180 °C	180 °C	180 °C	180 °C
Sterilization methods	all methods	all methods	all methods	all methods

23

24

25





T 50 digital

S 50 KG – HH – G 45 G	S 50 KG – HH – G 45 G – ST	S 50 KG – HH – G 45 M	S 50 KG – HH – G 45 F
S 50 KG – HH – G 45 G FDA	S 50 KG – HH – G 45 G – ST FDA	S 50 KG – HH – G 45 M FDA	S 50 KG – HH – G 45 F FDA
8003200	10000648	8003500	8004100
10000637	10000640	10000638	10000639
0.5 – 20 l	0.5 – 20 l	0.5 – 15 l	0.25 – 10 l
45 mm	45 mm	45 mm	45 mm
36 mm	38 mm	40.5 mm	40 mm
0.5 mm	0.5 mm	0.25 mm	0.5 mm
70 / 260 mm	70 / 260 mm	70 / 250 mm	70 / 250 mm
300 mm	300 mm	300 mm	290 mm
1 mbar	1 mbar	1 mbar	1 mbar
6 bar	6 bar	6 bar	6 bar
FFPM / SIC, AISI 316L	FFPM / SIC, AISI 316L	FFPM / SIC, AISI 316L	FFPM / SIC, AISI 316L
2 – 13	2 – 13	2 – 13	2 – 13
yes	yes	yes	yes
180 °C	110 °C	180 °C	180 °C
wet chemical	wet chemical	wet chemical	wet chemical

T 50 digital

Dispersing element	S 50 B – G 45 G	S 50 B – G 45 G – ST	S 50 B – G 45 M	S 50 B – G 45 F
Ident. No.	10000633	10000636	10000634	10000635
Working range	0.5 – 20 l	0.5 – 15 l	0.5 – 15 l	0.25 – 10 l
Stator diameter	45 mm	45 mm	45 mm	45 mm
Rotor diameter	36 mm	38 mm	40.5 mm	40 mm
Gap between rotor and stator	0.5 mm	0.5 mm	0.25 mm	0.5 mm
Min. / max. immersion depth	70 – 250 mm	70 – 250 mm	70 – 250 mm	70 – 250 mm
Shaft length	300 mm	300 mm	300 mm	300 mm
Materials in contact with medium	AISI 316L, bronze	AISI 316L, bronze	AISI 316L, bronze	AISI 316L, bronze
pH range	2 – 13	2 – 13	2 – 13	2 – 13
Suitable for solvents	yes	yes	yes	yes
Max. temperature	180 °C	180 °C	180 °C	180 °C
Sterilization methods	all methods	all methods	all methods	all methods

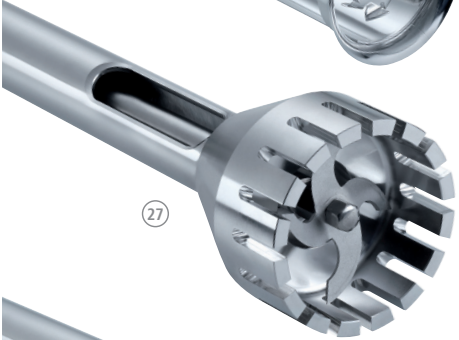




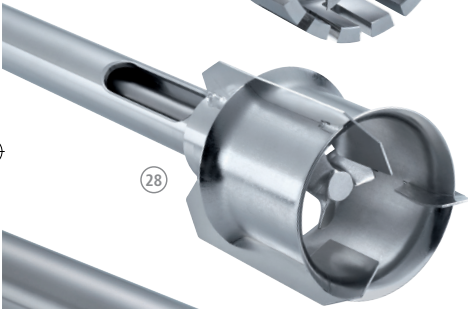
Dispersing tools



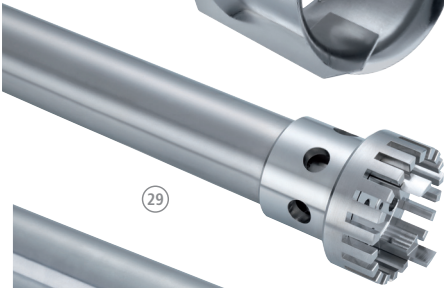
26



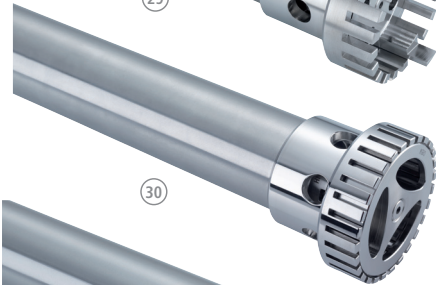
27



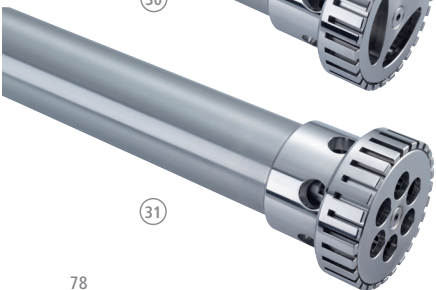
28



29



30



31

Dispersing element

- Ident. No.
- Working range
- Stator diameter
- Rotor diameter
- Gap between rotor and stator
- Min. / max. immersion depth
- Shaft length
- Materials in contact with medium
- pH range
- Suitable for solvents
- Max. temperature
- Sterilization methods
- Min. vacuum

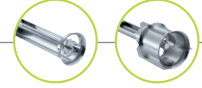
Dispersing element

- Ident. No.
- Working range
- Max. circumferential speed
- Max. permissible rotor diameter
- Material
- Generator diameter
- Min. / max. immersion depth
- Available seals

Dispersing element

- Ident. No.
- Working range
- Stator diameter
- Rotor diameter
- Gap between rotor and stator
- Min. / max. immersion depth
- Shaft length
- Materials in contact with medium
- pH range
- Suitable for solvents
- Max. temperature
- Sterilization methods
- Min. vacuum
- Max. pressure





T 50 digital

S 50 KR – G 45 G	S 50 KR – G 45 G – ST	S 50 KR – G 45 M	S 50 KR – G 45 F
10000629	10000632	10000630	10000631
0.5 – 20 l	0.5 – 20 l	0.5 – 15 l	0.25 – 10 l
45 mm	45 mm	45 mm	45 mm
36 mm	38 mm	40.5 mm	40 mm
0.5 mm	0.5 mm	0.25 mm	0.5 mm
70 – 260 mm	70 – 260 mm	70 – 260 mm	70 – 260 mm
300 mm	300 mm	300 mm	300 mm
PTFE, AISI 316L	PTFE, AISI 316L	PTFE, AISI 316L	PTFE, AISI 316L
2 – 13	2 – 13	2 – 13	2 – 13
no	no	no	no
110 °C	110 °C	110 °C	110 °C
wet chemical	wet chemical	wet chemical	wet chemical
100 mbar	100 mbar	100 mbar	100 mbar

T 50 digital

R 50 "high speed" stirring shaft	S 50 N – W 65 SK Cutting head	S 50 N – W 80 SMK Jet mixer head
1689300*	8005100	8006300
0.25 – 30 l	1 – 10 l	1 – 50 l
15.7 – 23 m/s	–	–
50 mm	–	–
Stainless steel (AISI 316L)	–	–
–	65 mm	80 mm
–	80 / 350 mm	140 / 350 mm
–	S 50 N	S 50 N

* Included with delivery:
R 1402 Dissolver
Ident. No. 1243300

(26)

(27)

(28)

T 65 basic I digital

S 65 KG – HH – G 65 G	S 65 KG – HH – G 65 M	S 65 KG – HH – G 65 F
8005500	8005700	8005900
2 – 50 l	2 – 40 l	2 – 30 l
65 mm	65 mm	65 mm
58 mm	58 mm	58 mm
0.5 mm	0.5 mm	0.5 mm
90 / 450 mm	80 / 450 mm	80 / 450 mm
520 mm	510 mm	500 mm
FFPM / SIC, AISI 316L	FFPM / SIC, AISI 316L	FFPM / SIC, AISI 316L
2 – 13	2 – 13	2 – 13
yes	yes	yes
180 °C	180 °C	180 °C
wet chemical	wet chemical	wet chemical
1 mbar	1 mbar	1 mbar
6 bar	6 bar	6 bar

(29)

(30)

(31)





Dispersing tools

T 65 basic I digital

	S 65 KR – G 65 G	S 65 KR – G 65 M	S 65 KR – G 65 F
Dispersing element	S 65 KR – G 65 G	S 65 KR – G 65 M	S 65 KR – G 65 F
Ident. No.	10000641	10000642	10000643
Working range	2 – 50 l	2 – 40 l	2 – 30 l
Stator diameter	65 mm	65 mm	65 mm
Rotor diameter	53 mm	58 mm	58 mm
Gap between rotor and stator	0.5 mm	0.5 mm	0.5 mm
Min. / max. immersion depth	90 – 450 mm	80 – 450 mm	80 – 450 mm
Shaft length	520 mm	520 mm	520 mm
Materials in contact with medium	PTFE, AISI 316L	PTFE, AISI 316L	PTFE, AISI 316L
pH range	2 – 13	2 – 13	2 – 13
Suitable for solvents	no	no	no
Max. temperature	80 °C	80 °C	80 °C
Sterilization methods	wet chemical	wet chemical	wet chemical
Min. vacuum	100 mbar	100 mbar	100 mbar





For dispersing instrument	Dispersing element Shaft / Agitator shaft	With seal or bearing type*	Generator or element**	With outer diameter (mm)	Degree of fineness achieved***
T 10 basic	S 10	N	—	5 / 8 / 10	G
T 18 digital	S 18	N	—	10 / 19	G
T 25 digital	S 25	N / KV / NK / KR	—	8 / 10 / 18 / 19 / 25	G / F
T 50 digital	S / R 50	N / B / KR	G / W	45 / 65 / 80	G / M / F
T 65 basic	S 65	KG – HH / KR	G	65	G / M / F
T 65 digital	S 65	KG – HH / KR	G	65	G / M / F

- * N = PTFE bearing
- KV = Ball bearing with vacuum-tight sliding-ring seal with silicon carbide seal rings
- NK = PTFE bearing with additional ball bearing without seal
- KG – HH = Ball bearing with sliding-ring seals of hard metal allow with FFPM seals rings
- B = Bronze bearing
- KR = Ball bearing with FKM or FFPM seal
- ** G = Proved configuration
- W = Special element
- *** G = Coarse
- M = Medium
- F = Fine





magic LAB[®]



magic LAB[®]



Materials in contact with medium made of stainless steel



7 interchangeable modules available



Handy transport box with integrated power supply included in delivery

magic LAB[®] with module UTL

Technical data

Motor power
Speed range (40 m/s)
Operating voltage
Frequency
Process pressure
Product temperature in continuous operation
In short time operation (up to 18 min/h)
Materials in contact with the medium
Sealing material
Shaft sealing ring
Elastomers in the working chamber
Dimensions (W x D x H)

magic LAB[®]

900 W
3000 – 26,000 rpm
220 – 240 V
50 – 60 Hz
up to 2.5 bar
up to 80 °C
up to 120 °C
Stainless steel (AISI 316L and AISI 316Ti)
PTFE-compound
Standard FPM
optional EPDM (FDA), FFPM
170 x 270 x 215 mm

Ident. No. U078310





magic LAB®

- > Suitable for a wide range of applications
- > Ideal for inline, circulating and classical batch processing
- > Safe scale-up due to many constant work parameters
- > Modular construction
- > Simple heating and cooling of all modules
- > Easy and quick exchange of the modules
- > With rotor-stator systems operating at circumferential speeds up to 40 m/s



Multifunction storage and transportation box

One machine for many mixing tasks

The magic LAB® is a unique and multi-functional small-scale laboratory machine. It is designed for mixing, dispersing, wet milling and incorporation of powders into liquids.

The magic LAB® is most frequently used for the development of new products or for optimizing of existing process techniques, particularly in the chemical, cosmetic, pharmaceutical and food industries. It is an ideal machine for continuous, circulating and batch processing with interchangeable modules.





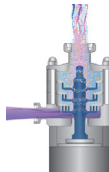
magic LAB®



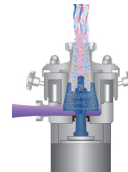
magic LAB® with module UTC
Dispersing/mixing in batch operation



CMS Periphery
The integrated solution for wetting
of most difficult powders



Three-stage dispersing for
manufacturing of fine emulsions
and suspensions.



Wet-milling by means of spiral
gearing milling tool. Production of
colloidal solutions. Adjustable flow
rate and friction by setting the gap
between the rotor and stator.

Technical data

Flow rate
Standard rotational speed
Circumferential speed

Module DISPAX-REACTOR® DR

80 l/h (H₂O)
14,600 rpm
23 m/s

Ident. No. U078352

Module Colloid mill MK

200 l/h (H₂O)**
14,600 rpm
23 m/s*

Ident. No. U076662

* At standard rotational speed and 50 Hz
** at minimal gap between the rotor and stator

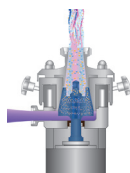




1 l module Micro-Plant
with exchangeable modules
(UTL / DR / MK / MKO)



2 l module Micro-Plant
with exchangeable modules
(UTL / DR / MK / MKO)

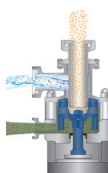


Wet-milling as with the MK-module. The cones are furnished with an abrasion-resistant tungsten carbide-cobalt coating. Narrowest grinding gap enables producing of even finer suspensions.

Module Cone mill MKO

25 l/h (H₂O)**
14,600 rpm
23 m/s*

Ident. No. U079664



Suction of solids into fluids in the recirculation process. Free from lumps and dust processing of powders and granules. Energy-efficient homogeneous mixing.

Module CMS

1000 l/h (H₂O)**
11,000 rpm
19.5 m/s*

Ident. No. U075333



Continuous mixing and dispersion of powders in liquids. Patented process. Fast and homogeneous mixing in only one passage, avoiding agglomerates. Solids content up to 80%.

Module MHD
(mixing, homogenising, dispersing)

60 l/h (H₂O)**
14,600 rpm
23 m/s*

Ident. No. U075262





Mills

IKA® introduces the world's first disposable grinding system for safe, instant and precise milling results. The disposable grinding chamber eliminates the possibility of cross-contamination and saves cleaning costs and time. Convenient to use while assuring high safety and reproducibility to cover a broad range of applications. One can also use dry ice to cool the sample. The Tube Mill control is patented, designed and manufactured exclusively by IKA®.





World's first!

- > Disposable grinding chamber
- > Stops cross-contamination
- > No cleaning required
- > Perfect milling results
- > Large application range

Tube Mill control



Dust-proof sealed housing
High level of user safety



Clearly arranged,
multi-lingual OLED display,
Error code display



Adjustable safety
speed and time



USB interface to control
and document all the
parameters and for up-
dating your firmware

Patented



reddot design award
winner 2013





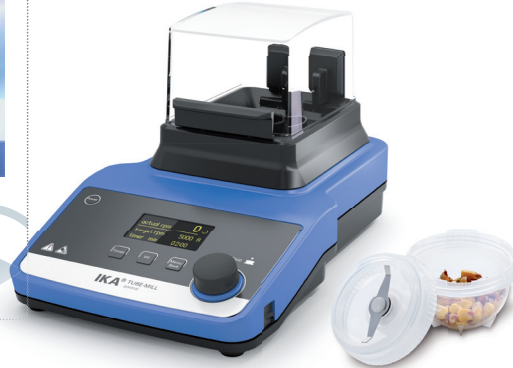
Mills



reddot design award
winner 2013



Watch the video:
www.ika.com/video



100 ml chamber coming soon.
Please contact your IKA® representative for further information

Technical data

Motor rating input / output	100 / 80 W
Speed range	5000 – 25,000 rpm
Useful volume	40 ml
Duty cycle (ON / OFF)	5 s – 3 min (timer)
Circumferential speed	65 m/s
Max. feed hardness	5 Mohs
Max. feed grain size	10 mm
Grinding chamber material	Transparent plastic (PP)
Dimensions (W x D x H)	180 x 300 x 170 mm
Weight	2.7 kg
Permissible relative moisture	80%
Protection class acc. to DIN EN 60529	IP 30

Tube Mill control

Ident. No. 4180000*

* Two single grinding chambers are included in the delivery



Disposable grinding chamber, 40 ml

	Ident. No.
MT 40.10	4425000
Disposable grinding chamber 40 ml (10 pieces/pack)	
MT 40.100	20001173
Disposable grinding chamber 40 ml (100 pieces/pack)	
MTC 40.100	20001182
Cover for MT 40	
MT 40.10 steril	20001984
Disposable grinding chamber steril 40 ml (10 pieces)	
MT 40.100 steril	20001985
Disposable grinding chamber steril 40 ml (100 pieces)	

Multiple grinding chamber, 40 ml

	Ident. No.
MMT 40.1	20003165
MMT 40.1 Stainless Steel package, includes 1 MMT 40 chamber, 25 sealings, 5 beaters, 5 couplings	
A-MMT 40.100	20003378
A-MMT 40.100 Abrasion Set Spare Parts, includes 100 sealings, 10 beaters, 10 couplings	





Quiet operation



Dust-proof sealed housing
High level of user safety



Adjustable safety
speed and time



Clearly arranged,
multi-lingual OLED display,
Error code display



Tube Mill
control



Interval operation available
Easy operation with touch
keypad



USB interface to control and
document all the param-
eters and for updating your
firmware

Cross-contamination free
No cleaning required
Precise milling results
Large application range





Mills

M 20



Removable, easy-to-clean,
high-grade steel chamber



Double-walled grinding
chamber

NEW
Q3/2015



Technical data	A 10 basic	A 11 basic	M 20 Universal mill
Motor rating input/output	300 / 240 W	160 / 100 W	620 / 260 W
Speed range	25,000 rpm (fixed)	28,000 rpm (fixed)	20,000 rpm (fixed)
Useful volume	50 ml	80 ml (optional 250 ml)	250 ml
Duty cycle (ON / OFF)	5 / 10 min	1 / 10 min	7 / 10 min
Overload protection	yes	yes	yes
Circumferential speed	72 m/s	53 m/s	72 m/s
Max. feed hardness	5 Mohs*	6 Mohs*	5 Mohs*
Max. feed grain size	6 mm	10 mm	7 mm
Grinding chamber material	stainless steel (AISI 14301)	stainless steel (AISI 316L)	stainless steel (AISI 316L)
Dimensions (W x D x H)	130 x 145 x 250 mm	85 x 85 x 240 mm	170 x 170 x 350 mm
Weight	2.9 kg	1.5 kg	6.6 kg
Permissible ambient temperature	5 – 40 °C	5 – 40 °C	5 – 40 °C
Permissible relative moisture	80%	80%	80%
Protection class acc. to DIN EN 60529	IP 21	IP 43	IP 21
	Ident. No. 4020700**	Ident. No. 2900000	Ident. No. 1603600

* 9 Mohs with accessory beater/cutter M 22, A 10.3 or A 11.3

** A 10.1 and A 10.4 included in the delivery of all A 10 basic





A 11
basic



Quiet operation



Easily exchangeable
beater / cutter





Universal mill | Microfine grinder



MF 10.1
Cutting-grinding head
MF 10.2
Impact-grinding head

Technical data	MF 10 basic
Motor rating input/output	1000 / 500 W
Speed range	3000 – 6500 rpm
Speed display	no
Useful volume	max. 5 kg/h
Duty cycle (ON / OFF)	120 / 30 min
Overload protection	yes
Circumferential speed	22.5 m/s
Max. feed hardness	6 Mohs
Max. feed grain size	15 mm
Grinding chamber material	stainless steel (AISI 304)
Dimensions (W x D x H)	320 x 300 x 560 mm
Weight	11.9 kg (incl. MF 10.1)
Permissible ambient temperature	5 – 40 °C
Permissible relative moisture	80%
Protection class acc. to DIN EN 60529	IP 22

Ident. No. 2836000

Technical data	
Circumferential speed	22.5 m/s 31.4 m/s
Max. granularity of task	max. 15 mm max. 10 mm
Dimensions including MF 10 basic	320 x 300 x 560 mm 320 x 300 x 450 mm
Weight including MF 10 basic	11.9 kg 12.4 kg
Materials in contact with medium	stainless steel

- 1 MF 10.1
Cutting-grinding head
Ident. No. 2870900
- 2 MF 10.2
Impact-grinding head
Ident. No. 2871000





**MF 10
basic**



Easily interchangeable heads



Easy to clean working surface made of stainless steel



Powerful drive

Powerful





Mills | Accessories

A 10 basic accessories

	Ident. No.
A 10.1	25001680
Stainless steel cutter	
A 10.2	25001162
Star-shaped cutter	
A 10.3	25001161
Hard metal cutter	
A 10.4	25001664
Grinding chamber reduction	

A 11 basic accessories

	Ident. No.
A 11.1	2904600
Spare beater, stainless steel	
A 11.2	2905200
Cutting blade, stainless steel	
A 11.3	2983000
Beater, stainless steel, coated with chromium carbide	
A 11.4	2904100
Grinding chamber, polycarbonate, 250 ml	
A 11.5	2983100
Spare grinding chamber, Tefcel, 80 ml	
A 11.6	3302900
Double beater, titanium	
A 11.7	3048700
Funnel, jacket PTFE, sieve stainless steel	





MF 10 basic accessories

	Ident. No.
MF 0.25	2938900
Sieve, Ø 0.25 mm	
MF 0.5	2939000
Sieve, Ø 0.5 mm	
MF 1.0	2939200
Sieve, Ø 1 mm	
MF 2.0	2939400
Sieve, Ø 2 mm	
MF 3.0	2939500
Sieve, Ø 3 mm	
MF 4.0	2939600
Sieve, Ø 4 mm	

M 20 accessories

	Ident. No.
M 21	0328200
Spare cutter, stainless steel	
M 22	0521800
Hard metal cutter, tungsten carbide	
M 23	1443400
Star-shaped cutter, stainless steel	
M 20.1	8006200
Grinding chamber, 250 ml	





Universal mill | Pilotina

IKA® +

The IKA® Pilotina can be used for a great variety of milling functions in a diverse range of industrial tasks.



The universal 2 in 1 mill for dry products



The cutting mill system
The preeminent choice for the disintegration of smooth, sticky, elastic or fibrous materials.



The impact milling system
The foremost option for the disintegration of hard and brittle materials.

Technical data	Pilotina MU	Pilotina MC	Pilotina MI
Motor power	3 kW	1.5 kW	1.5 kW
Speed range	1500 – 4500 rpm	1500 rpm	3000 rpm
Speed indication	digital	no	no
Capacity (depending on the final fineness)	approx. 60 – 80 kg/h	approx. 60 kg/h	approx. 80 kg/h
Overload protection	yes	yes	yes
Circumferential speed	9 – 34 m/s	9 m/s	22 m/s
Max. charging hardness	3 or 6 Mohs	3 Mohs	6 Mohs
Approx. max. charging size	65 x 60 or 25 mm	65 x 60 mm	25 mm
Dimensions, approx. (L x W x H)	485 x 575 x 700 mm	485 x 575 x 700 mm	485 x 575 x 630 mm
Weight, approx.	80 kg	70 kg	70 kg
Protection type	IP 55	IP 55	IP 55
	Ident. No. U105421	Ident. No. U106466	Ident. No. U106465





Pilotina



Easily interchangeable funnels



Easy conversion from a cutting mill to an impact mill



Circumferential speed adjustable to requirements of the milling process



Safe design of inlet and outlet

Universal 2 in 1 Mill for dry products

The IKA® Pilotina is a dry milling system in pilot plant scale, available in 3 different configurations. The modular design allows an easy modification from impact to cutting mill and vice versa within shortest time. Your advantage: one machine, two milling principles, all this without making any compromise regarding disintegration quality. Due to the powerful, frequency controlled 3 kW drive with digital indication the circumferential speed of the tool can be adjusted to the required milling process in an optimum way.





Dry Block Heaters



IKA® has a diverse range of dry block heaters designed to accommodate various interchangeable heating blocks. They provide precise temperature control for reproducible results. These digital block heaters are ideal for melting and boiling point determination, enzyme reactions, incubation and activation of cultures, immunoassays, DNA denaturation, culture media tests, coagulation tests, blood urea- nitrogen determinations and in situ hybridizations.





Precise temperature control!

- > Bushing acc. to DIN 12878
- > Rapid heat up rates
- > Exceptional temperature uniformity
- > PT 1000.60 temperature sensor included in the delivery



Dry Block Heater 3



Temperature display for the actual/set-point temperatures, up/down arrows for set-point control



A wide range of interchangeable heating blocks to fit any sample tube or plate



External probe for accurate temperature control



Timer display for accurate and reproducible conditions, up/down arrows for set-point control

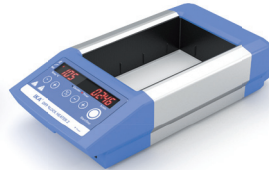




Dry Block Heaters

IKA® dry block heaters are highly versatile suitable for broad range of applications.

- > DNA extractions
- > DNA analysis
- > Melting point determination
- > Boiling point determination
- > Immunoassays
- > Enzyme reactions
- > Enzymatic processes
- > Enzyme activity studies
- > In situ hybridization
- > Blood-urea-nitrogen determinations
- > Nucleic acid hybridization
- > Coagulation studies
- > Biochemical processes
- > Incubation and activation of cultures
- > Blood examinations
- > Fertile ground processing
- > Restriction digest
- > Denaturation



Technical data	Dry Block Heater 1	Dry Block Heater 2
Number of blocks	1	2
Heat output	165 W	250 W
Heating temperature range	RT +5 °C to 120 °C	RT +5 °C to 120 °C
Display	LED	LED
Heat control accuracy	± 1 K	± 1 K
Connection for external temperature sensor	DIN 12878	DIN 12878
Control accuracy with sensor	± 1 K	± 1 K
Material of the blocks	aluminum alloy	aluminum alloy
Timer	1 min to 99h 59min	1 min to 99h 59min
Dimensions (W x D x H)	151 x 228 x 73 mm	151 x 304 x 73 mm
	Ident. No. 4025100*	Ident. No. 4025200*


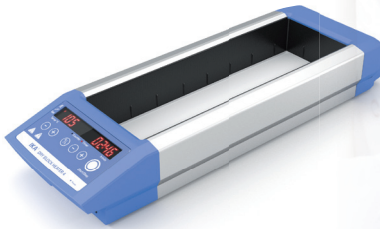
* PT 1000.60 Temperature sensor included in the delivery of all the Dry Block Heaters





IKA®+

PT 1000.60 temperature sensor
included in the delivery.

Dry Block Heater 3

3
330 W
RT +5 °C to 120 °C
LED
± 1 K
DIN 12878
± 1 K
aluminum alloy
1 min to 99h 59min
151 x 380 x 73 mm
Ident. No. 4025300*

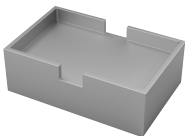
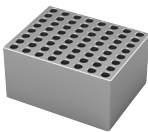
Dry Block Heater 4

4
412 W
RT +5 °C to 120 °C
LED
± 1 K
DIN 12878
± 1 K
aluminum alloy
1 min to 99h 59min
151 x 456 x 73 mm
Ident. No. 4025400*





Dry Block Heaters



Single blocks (95 x 76 x 51)

Micro centrifuge tubes

- DB 1.1 Single block, PCR tubes, 0.5 ml
- DB 1.2 Single block, Eppendorf tubes, 1.5 ml
- DB 1.3 Single block, Microtubes, 1.5 ml
- DB 1.4 Single block, Eppendorf tubes, 2.0 ml
- DB 1.5 Single block, Corning tubes, 2.0 ml

Conical bottom centrifuge tubes

- DB 2.1 Single block, Conical tubes, 15 ml
- DB 2.2 Single block, Conical tubes, 50 ml

Combination blocks

- DB 3.1 Single block, test tube combination, 6 / 12 / 13 / 25 mm
- DB 3.2 Single block, centrifuge combination, 1.5 / 15 / 50 ml
- DB 3.3 Single block, microtube combination, 0.5 / 1.5 / 2 ml

Standard test tubes

- DB 4.1 Single block, Round tubes, 6 mm
- DB 4.2 Single block, Round tubes, 10 mm
- DB 4.3 Single block, Round tubes, 12 / 13 mm
- DB 4.4 Single block, Round tubes, 12 / 13 mm
- DB 4.5 Single block, Round tubes, 15 / 16 mm
- DB 4.6 Single block, Round tubes, 20 mm
- DB 4.7 Single block, Round tubes, 25 mm
- DB 4.8 Single block, Round tubes, 35 mm
- DB 4.9 Single block, Round tubes, 17 / 18 mm

Vials

- DB 5.1 Single block, 12 mm vials
- DB 5.2 Single block, 15 mm vials
- DB 5.3 Single block, 17 mm vials
- DB 5.4 Single block, 19 mm vials
- DB 5.5 Single block, 21 mm vials
- DB 5.6 Single block, 23 mm vials
- DB 5.7 Single block, 25 mm vials
- DB 5.8 Single block, 28 mm vials
- DB 5.9 Single block, 16 mm vials

PCR - plates, tubes, strips

- DB 6.1 Single block, 10 x 8 PCR tube strips, 0.2 ml tubes
- DB 6.2 Single block, 64 PCR tubes, 0.2 ml tubes
- DB 6.3 Double block, 1 x 96-well PCR plate, 0.2 ml tubes

Cuvettes

- DB 8.1 Single block, 2 x 6 cuvettes, 12.5 mm

Double block (95 x 152 x 57)

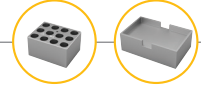
Microtitre plates

- DB 7.1 Double block, 96- or 384-Well-Platte

Temperature sensors

- PT 1000.60
- PT 1000.90





Holes Ø	No. of holes	Hole depth (mm)	Ident. No.
Ø 7.9 mm	30	27.6	4467600
Ø 11.5 mm	20	36.9	4467700
Ø 11.1 mm	20	39.1	4467800
Ø 11.5 mm	20	38.1	4467900
Ø 10.9 mm	20	38.1	4468000
Ø 17.1 mm	12	44.5	4468100
Ø 29.0 mm	5	47.6	4468200
Ø 8.3 / Ø 13.9 / Ø 26.2 mm	6 / 5 / 3	48.4 / 48.4 / 48.4	4468300
Ø 11.1 / Ø 17.1 / Ø 29.0 mm	4 / 3 / 2	39.1 / 44.5 / 47.6	4468400
Ø 7.9 / Ø 11.1 / Ø 11.5 mm	6 / 10 / 5	27.6 / 39.1 / 38.1	4468500
Ø 8.3 mm	30	48.4	4468600
Ø 10.7 mm	24	48.4	4468700
Ø 13.9 mm	16	48.4	4468800
Ø 13.9 mm	20	48.4	4468900
Ø 17.5 mm	12	48.4	4469000
Ø 21 mm	8	48.4	4469100
Ø 26.2 mm	6	48.4	4469200
Ø 35 mm	4	47.6	4469300
Ø 19.1 mm	12	48.4	4469400
Ø 12.7 mm	20	30.0	4469500
Ø 15.8 mm	20	35.0	4469600
Ø 17.8 mm	12	45.0	4469700
Ø 19.7 mm	12	45.0	4469800
Ø 21.7 mm	9	45.0	4469900
Ø 23.8 mm	8	45.0	4470000
Ø 25.8 mm	8	45.0	4470100
Ø 28.8 mm	6	45.0	4470200
Ø 16.4 mm	15	45.0	4470300
Ø 6.4 mm	80	15.5	4470400
Ø 6.4 mm	64	20.2	4470500
Ø 6.4 mm	96	15.5	4470600
		25.4	4470700
Holes Ø	No. of holes	Hole depth (mm)	Ident. No.
-	-	13.5	4470800
			Ident. No.
Temperature sensor, stainless steel, Ø 3 mm			3516800
Temperature sensor, stainless steel, coated with SafeCoat, Ø 3 mm			4480600





Hotplates



IKA® hotplates allow for safe heating and tempering. The set-up plate is made from glass ceramics that ensures the best possible chemical resistance. The hotplates offer a high level of safety due to a fixed safety circuit, the Hot Top indicator, and the error code display. An electronic temperature sensor may be connected for precise temperature control.





C-MAG HP 7



Elevated control panel for protection against spilled liquids



Hot top indicator to prevent burns



LED digital display for precise temperature setting



Ceramic set-up plate offers excellent chemical resistance to acid, bases and solvents



	C-MAG HP 4	C-MAG HP 7	C-MAG HP 10
Technical data			
Temperature display	digital	digital	digital
Heat output	250 W	1000 W	1500 W
Heating rate	2.5 K/min	5 K/min	5 K/min
Temperature range	50 – 500 °C	50 – 500 °C	50 – 500 °C
Setting accuracy	± 5 K	± 5 K	± 5 K
Safety circuit fixed	550 °C	550 °C	550 °C
Control accuracy with sensor	–	ETS-D5 / ± 0.5 K	ETS-D5 / ± 0.5 K
Heating plate material	glass ceramic	glass ceramic	glass ceramic
Weight	3 kg	5 kg	6 kg
Dimensions (W x D x H)	150 x 260 x 105 mm	220 x 330 x 105 mm	300 x 415 x 105 mm
	Ident. No. 3581600	Ident. No. 3581800	Ident. No. 3582000





Heating baths



IKA® heating baths are developed with a strong focus on safety. All baths are equipped with a double jacket to protect against burns and a safety temperature monitor keeps the bath from over heating. After turning on the unit every time, the safety functions are automatically checked.





HB 10
With locking
function



HB 10



LCD digital display
for precise temperature
setting



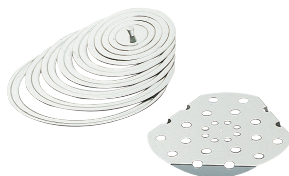
**Key-button with locking
function for the heating
bath temperature**



**Integrated ergonomic
carrying handles**



	HB 10	HBR 4 digital
Technical data		
Heat output	1300 W	1000 W
Temperature range	RT – 180 °C	RT – 200 °C
Setting tolerance	± 1 K	± 1 K
Deviation (3 l H ₂ O, 90 °C)	± 1 K	± 1 K
Temperature display	digital	digital
Volume	3 L	5 L
Safety class acc. to DIN 12877	2	2
Adjustable safety circuit min / max	50 °C / 190 °C	–
Material	stainless steel 1.4301	stainless steel (AISI 304)
Weight	3 kg	4.4 kg
Dimensions (W x D x H)	290 x 190 x 265 mm	–
	Ident. No. 4068000	Ident. No. 2602300



HBR 4 digital accessories

	Ident. No.
H 240	2858700
Ring set	
H 159	1809700
Intermediate bottom	





Temperature control



IKA® temperature control systems ensure the safe and precise temperature control of liquids. The immersion circulators temper liquids up to 100° C. Able to withstand a powerful heat output of 1500 W, IKA® circulators are safe to use with all standard bath vessels. The products control the temperature from 28 to 300° C and are fully geared towards safety and comfort. Intelligent features of the immersion and heating bath circulators include: plug & play technology, digital display, easy control, set point limiting, and a visual/ acoustic alarm.





Highly powerful bridge thermostats!

- > Temperature range: RT – 250 °C
- > Powerful pressure / suction pump
- > Adjustable safety circuit

Removable wireless controller (WiCo) for convenient and user-friendly operation!



IC control



Integrated pressure / suction pump allows flexibility for internal and external applications



Flexible bath bridge enables easy mounting on different water bath sizes



Large easy-to-read TFT display



Removable wireless controller (WiCo) for easy and safe operation up to 10 m





Temperature control



Technical data

Appliance type

Heater capacity (230 / 115 V)

Temperature range

Temperature display

Temperature stability DIN 12876

Bath volume range

Max. flow rate (at 0 bar)

Max. pump pressure

Min. suction pressure

Dimensions (W x D x H)

USB interface

ICC basic | control

Compact immersion circulator

2000 / 1000 W

RT +10°C – 150 °C |
RT +10°C – 150 °C
(20 °C with cooling coil*)

LED | TFT

± 0.02 K | ± 0.01 K

depends on used bath

18 l/min

0.3 bar

0.2 bar

147 x 158 x 340 mm

yes

Ident. No. 4134400

Ident. No. 4136600

IC basic | control

Immersion circulator

2500 / 1200 W

RT +10°C – 200 °C |
RT +10°C – 250 °C
(20 °C with cooling coil*)

LED | TFT

± 0.02 K | ± 0.01 K

depends on used bath

26 l/min | 31 l/min

0.45 bar | 0.61 bar

0.35 bar | 0.45 bar

245 x 260 x 300 mm

yes

Ident. No. 3861000

Ident. No. 3863000**

* Lower working temperatures possible with connection to a chiller

** PT 100.30 and CC 1 Cooling Coil included in delivery

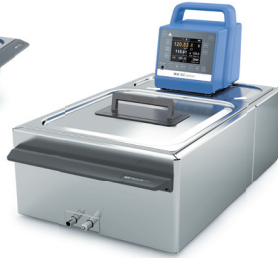




Thermostats control | Packages



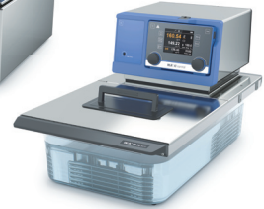
ICC basic eco 8



ICC control pro 20 c



IC basic pro 12 c



ICC control eco 18 c

Description	Package name	Ident. No.
Open heating bath circulator	ICC basic eco 8*	8034900
	ICC basic pro 9	8035100
	ICC basic eco 18*	8035000
	ICC basic pro 12	10000414
	ICC basic pro 20	8035200
Open heating bath circulator	ICC control eco 8*	8035300
	ICC control pro 9	8035500
	ICC control eco 18*	8035400
	ICC control pro 12	10000415
	ICC control pro 20	8035600
Open heating bath circulator with cover**	ICC basic eco 8 c*	8035700
	ICC basic pro 9 c	8035900
	ICC basic eco 18 c*	8035800
	ICC basic pro 12 c	10000416
	ICC basic pro 20 c	8036000
Open heating bath circulator with cover**	ICC control eco 8 c*	8036100
	ICC control pro 9 c	8036300
	ICC control eco 18 c*	8036200
	ICC control pro 12 c	10000417
	ICC control pro 20 c	8036400
Open heating bath circulator with cover	IC basic eco 18 c*	8036600
	IC basic pro 12 c	8039900
	IC basic pro 20 c	8036800
Open heating bath circulator with cover	IC control eco 18 c*	8037000
	IC control pro 12 c	8040000
	IC control pro 20 c	8037200

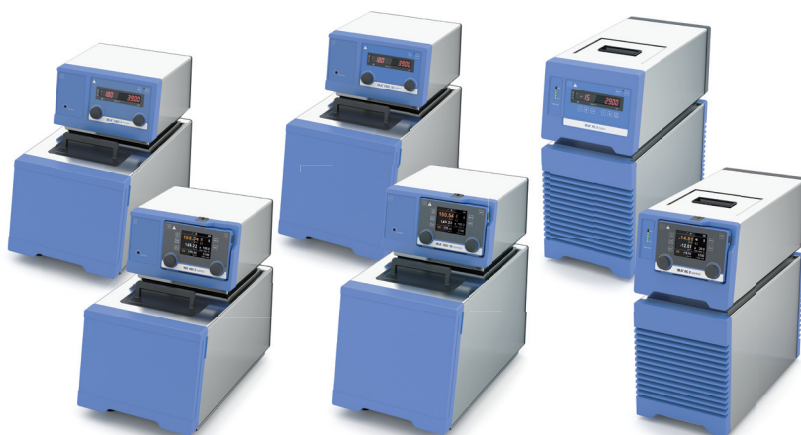
* Maximum Temperature 100 °C

** PT 100.30 and CC 1 Cooling Coil included in delivery

Package details
on page 160



Temperature control



Technical data	HBC 5 basic control	HBC 10 basic control	RC 2 basic control
Appliance type	Heating bath circulator	Heating bath circulator	Recirculating chiller
Safety class	III (FL)	III (FL)	I (FL)
Cooling capacity at 20°C	–	–	400 W
Heater capacity (230 / 115 V)	2500 / 1200 W	2500 / 1200 W	–
Temperature range	RT +10°C – 200 °C RT +10°C – 250 °C (with integrated cooling coil*)	RT +10°C – 200 °C RT +10°C – 250 °C (with integrated cooling coil*)	-20 °C – RT
Temperature display	LED TFT	LED TFT	LED TFT
Temperature stability DIN 12876	± 0.02 K ± 0.01 K	± 0.02 K ± 0.01 K	± 0.1 K ± 0.05 K
Bath volume range	5 – 7 l	8 – 11 l	1.4 – 4 l
Max. flow rate (at 0 bar)	26 l/min 31 l/min	26 l/min 31 l/min	18 l/min
Max. pump pressure	0.45 bar 0.61 bar	0.45 bar 0.61 bar	0.3 bar
Min. suction pressure	0.35 bar 0.45 bar	0.35 bar 0.45 bar	0.2 bar
Dimensions (W x D x H)	275 x 500 x 405 mm	275 x 510 x 455 mm	220 x 526 x 480 mm
Permissible ambient temperature	5 – 40 °C	5 – 40 °C	5 – 32 °C
Permissible relative moisture	80%	80%	80%
Protection class acc. to DIN EN 60529	IP 21	IP 21	IP 21
USB / RS 232 interface	yes	yes	yes
	Ident. No. 4125000 Ident. No. 4127000	Ident. No. 4135000 Ident. No. 4137000	Ident. No. 4171000 Ident. No. 4173000

* Lower working temperatures possible with connection to a chiller



HBC 5 control



Integrated pressure / suction pump allows flexibility for internal and external applications



Precise temperature stability ± 0.01 K



Removable wireless controller (WiCo) for easy and safe operation up to 10 m



EH 4 basic Immersion thermostat
EH 4.1 Bath vessel 5 l
EH 4.2 Bath vessel 11 l
EH 4.3 Bath vessel 18 l



EH 4 basic
Ident. No. 3164000
EH 4.1 Bath vessel 5 l
Ident. No. 3335000
EH 4.2 Bath vessel 11 l
Ident. No. 3335100
EH 4.3 Bath vessel 18 l
Ident. No. 3335200



Integrated handles for easy carrying



Optical and acoustic warning function e.g. for over heating





Temperature control | Accessories



Accessories EH 4 Immersion circulator

	Ident. No.
EH 4 basic Immersion circulator	3164000
EH 4.1 Bath vessel, 5 l	3335000
EH 4.2 Bath vessel, 11 l	3335100
EH 4.3 Bath vessel, 18 l	3335200

Bath vessel

	Ident. No.
① IKA® IB eco 8* Bath vessel, plastic, 8 l, size S	4248100
② IKA® IB eco 18* Bath vessel, plastic, 18 l, size L	4248200
③ IKA® IB pro 9 Bath vessel, stainless steel, 9 l, size S	4248500
IKA® IB pro 12 Bath vessel, stainless steel, 12 l, size M	4577500
④ IKA® IB pro 20 Bath vessel, stainless steel, 20 l, size L	4248600

* Maximum temperature 100 °C

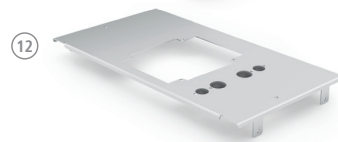
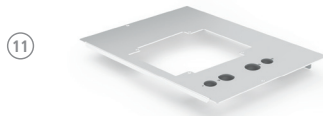
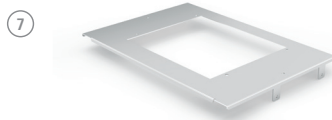
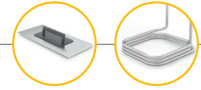
Accessories IC

	Ident. No.
⑤ CM.IC Cover, medium for IC, 12 l bath vessels	4577600
⑥ CL.IC Cover, big for IC, 18/20 l bath vessels	4471800
⑦ BS.IC Bridge, small for IC, 12/18/20 l bath vessels	4472800
CC1 Cooling coil for IC basic + control	4365600

Accessories ICC

	Ident. No.
⑧ CS.ICC Cover, small for ICC, 8/9 l bath vessels	4471500
⑨ CM.ICC Cover, medium for ICC, 12 l bath vessels	25000290
⑩ CL.ICC Cover, big for ICC, 18/20 l bath vessels	4471600
⑪ BS.ICC Bridge, small for ICC, 8/9 l bath vessels	20003077
⑫ BL.ICC Bridge, big for ICC, 18/20 l bath vessels	20003078
⑬ CC2 Cooling coil for ICC	25001061
⑭ PCS.ICC Pump connection set for ICC	4471900





Thermofluids	Ident. No.
HF.Si.20.250.50A Heating fluid Si250A; 10 kg	20003521
HF.Si.20.200.50 Heating Fluid Si200; 10 kg	20003520
UF.Si.N30.150.10LV Universal fluid Si150 LV; 9 kg	20003518
CF.EG39.N30.80.22 Cooling fluid EG30; 10.6 kg	20003522
CF.EG100 Cooling fluid EG 100%; 10.6 kg	20004883

Soon available





Temperature control | Accessories



15



16



17



18



19



20



21



22

Hoses

	Ident. No.
15 LT 5.20 Hose, insulated, stainless steel, Ø 10 mm, 150 mm, 2 pcs.	2606700
LT 5.21 Hose, insulated, PTFE, Ø 13 mm, 150 mm, 2 pcs.	20000988
16 H.PVC.8 Hose, PVC, Ø 8 mm, 150 mm, 2 pcs.	4568800
H.PVC.12 Hose, PVC, Ø 12 mm, 150 mm, 2 pcs.	4568900
17 H.SI.8 Hose, silicone, Ø 8 mm, 150 mm, 2 pcs.	4569000
H.SI.12 Hose, silicone, Ø 12 mm, 150 mm, 2 pcs.	4569100
18 H.PUR.8.R Hose, PUR, Ø 8 mm, 150 mm, 2 pcs.	20004612
H.PUR.12 Hose, PUR, Ø 12 mm, 150 mm, 2 pcs.	20004613
19 H.FKM.8 Hose, FKM, Ø 8 mm, 150 mm, 2 pcs.	4569200
H.FKM.12 Hose, FKM, Ø 12 mm, 150 mm, 2 pcs.	4569300

Insulation for hoses

	Ident. No.
20 ISO.8 Insulation, Ø 8 mm	4569400
21 ISO.12 Insulation, Ø 12 mm	4569500

Tube Racks

	Ident. No.
TubeRack.S. Type1.V4A.fit Stainless steel rack for bath size S, 57 x Ø 13 mm	20004026
TubeRack.S. Type2.V4A..fit Stainless steel rack for bath size S, 37 x Ø 17 mm	20004027
TubeRack.S. Type3.V4A.fit Stainless steel rack for bath size S, 22 x Ø 22 mm	20004028
TubeRack.L. Type1.V4A.fit Stainless steel rack for bath size L, 73 x Ø 13 mm	20004029
TubeRack.L. Type2.V4A.fit Stainless steel rack for bath size L, 47 x Ø 17 mm	20004030
TubeRack.L. Type3.V4A.fit Stainless steel rack for bath size L, 30 x Ø 22 mm	20004031





Floating racks

	Ident. No.
Floating tube rack Type 1	20003667
Floating tube rack for 24 x 1.5/2.0 ml tubes, 5 pcs.	
Floating tube rack Type 2	20003668
Floating tube rack for 8 x 15 ml tubes, 5 pcs.	
Floating tube rack Type 3	20003669
Floating tube rack for 4 x 50 ml tubes, 5 pcs.	

Magnetic valves

	Ident. No.
MV 1	20003763
Magnetic valve for cooling water control Max. 100 °C	
CO V 1	20000249
Closed pressure valve for external pump connection Set. Max. 180 °C	
22 Ball valve M 16 x 1	20004620
Ball valve, complete open (M 16 x 1)	
Mechanic fluid level controller	20004618
Mechanic fluid level controller	

Adapters

	Ident. No.
23 Elbow tube 90° Elbow tube 90°	25001212
24 Olive for DN 6 hoses Olive for DN 6 hoses 2 pcs.	20004667
25 Olive for DN 8 hoses Olive for DN 8 hoses 2 pcs.	20004566
Olive for DN 12 hoses Olive for DN 12 hoses 2 pcs.	20004889
Olive for DN 10 hoses Olive for DN 10 hoses 2 pcs.	20004568
Adapter NPT 1/4 Adapter M 16 to NPT 1/4 2 pcs.	20004569
Adapter NPT 1/2 Adapter M 16 to NPT 1/2 2 pcs.	20004570
Adapter NPT 3/4 Adapter M 16 to NPT 3/4 2 pcs.	20004571
Lock nut (2 pcs.) Lock nut 2 pcs.	20004583
26 Stopper (2 pcs.) Stopper 2 pcs.	20004584


Additional Accessories

	Ident. No.
WH10 WiCo holder	20000984
27 PT 100.30 Temp. sensor, stn. steel	4284700
Hollow balls, PP Hollow balls, PP, 500 pcs.	20003666





Centrifuge



IKA® micro centrifuge is ideal for applications which do not require ultra high speeds e.g., micro-filtrations and cell separations. The centrifuge features a compact design and a small footprint. A transparent lid allows for constant observation of the centrifuge which can be used with both microcentrifuge and PCR strip tubes. As a safety feature, the mini G will only operate when the lid is closed.





Integrated quick stop



Rotor exchangeable without tools



Adjustable digital timer



Quiet operation



Special safety features



Touch keypad for easy operation

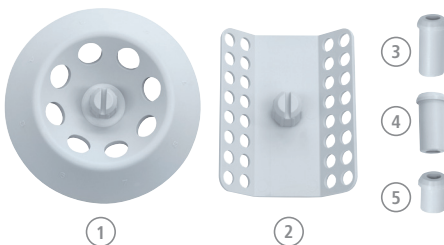


Technical data

Capacity	8 x 2.0 ml
Permitted density	1.2 kg / dm ³
Centrifugal acceleration	2000 G
Max. kinetic energy	20 Nm
Motor rating input / output	12 / 8 W
Fixed speed	6000 rpm
Reversible direction of rotation	no
Dimensions (W x D x H)	155 x 175 x 105 mm
Weight	1.4 kg

mini G

Ident. No. 3958000



Accessories included in the delivery

Ident. No.

①	Rotor 8 x 1.5 / 2 ml	3918500
②	Rotor 4 x strip 8 x 0.2 ml	4531300
③	Adapter set 0.5 ml x 8	4470900
④	Adapter set 0.4 ml x 8	4470901
⑤	Adapter set 0.2 ml x 8	4470902





Rotary Evaporators



MAGIC DISTILLATION

Watch the video now:
www.ika.com/video



IKA® rotary evaporators set new standards for safety, efficiency and ease of use. These products offer excellent distilling solutions. All IKA® RV 10 evaporators are equipped with an automated lift including a safety stop function. More safety features are: interval operation, smooth start, end position recognition, automated lift-out in case of power outage as well as a timer function.





Efficient & safe distillation!

- > Automated management of cooling water
- > Automated venting after process end
- > Automated management of Heating bath controls

**IKA®
Patent**
Volume controlled
distillation!

**RV 10
control**



Two digital displays for an optimal overview



Compatible with the complete range of IKA® RV 10 glassware



Can be moved by 140 mm to accommodate different flasks



Adjustable immersion angle and height





Rotary Evaporators

**Best-in-class
cooling surface
1500 cm²**

- V:** Rotary evaporator with set of vertical glassware
- V-C:** Rotary evaporator with set of vertical coated glassware
- FLEX:** Rotary evaporator without any glassware (condenser, evaporation and receiving flask); either use pre-existing IKA® glassware or order separately
- Dry Ice:** Rotary evaporator with dry ice condenser glassware set



Drive

Motor type

Motor rating input

Speed range

Speed display

Clockwise and counter-clockwise

Soft start

Head angle adjustable

Stroke displacement

Setting of lower end stop

Vacuum controller

RV 8

brushless DC drive motor

50 W

5 – 300 rpm

digital

no

yes

0 to 45°

120 mm, manual

no

optional

General data

Dimensions (W x D x H)

Weight of the drive incl. heating bath without glass parts

Permissible ambient temperature

Permissible relative moisture

Protection class according to DIN EN 60529

Voltage / Frequency

510 x 345 x 490 mm

17.2 kg

5 to 40 °C

80%

IP 20

220 – 240 V / 50/60 Hz

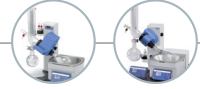
RV 8 V Ident. No. 10000387

RV 8 V-C Ident. No. 10000392

RV 8 FLEX Ident. No. 10000393

**Package details
on page 162**





The new RV 8 offers an effortless manual lifting mechanism. The ambidextrous design makes working more convenient and comfortable.



Compatible with the complete range of IKA® glassware

RV 8 V



Adjustable immersion angle and height



Can be moved by 120 mm to accommodate different flasks



Heating bath can be used as a stand-alone unit and has integrated ergonomic carrying handles





Rotary Evaporators



Watch the video now:
www.ika.com/video



- V:** Rotary evaporator with set of vertical glassware
- V-C:** Rotary evaporator with set of vertical coated glassware
- FLEX:** Rotary evaporator without any glassware (condenser, evaporation and receiving flask); either use pre-existing IKA® glassware or order separately
- Dry Ice:** Rotary evaporator with dry ice condenser glassware set

Drive

Motor type	brushless DC drive motor
Motor rating input	50 W
Speed range	20 – 280 rpm
Speed display	digital
Clockwise and counter-clockwise	yes
Soft start	yes
Head angle adjustable	0 to 45°
Stroke displacement	140 mm, motorized
Setting of lower end stop	60 mm, contact free
Vacuum controller	optional

General data

Dimensions (W x D x H)	530 x 410 x 430 mm
Weight of the drive incl. heating bath without glass parts	20 kg
Permissible ambient temperature	5 to 40 °C
Permissible relative moisture	80%
Protection class according to DIN EN 60529	IP 20
Voltage / Frequency	220 – 240 V / 50/60 Hz

* RV 10.4002 Magnetic valve now included with delivery of every RV 10 control V, V-C and FLEX package

RV 10 digital

brushless DC drive motor
50 W
20 – 280 rpm
digital
yes
yes
0 to 45°
140 mm, motorized
60 mm, contact free
optional
530 x 410 x 430 mm
20 kg
5 to 40 °C
80%
IP 20
220 – 240 V / 50/60 Hz
RV 10 digital V Ident. No. 80414A0
RV 10 digital V-C Ident. No. 80416A0
RV 10 digital FLEX Ident. No. 80412A0

Package details
on page 162





Automatic
boiling point
detection



RV 10 control

brushless DC drive motor

50 W

20 – 280 rpm

digital

yes

yes

0 to 45°

140 mm, motorized

60 mm, contact free

integrated

530 x 410 x 430 mm

21.5 kg

5 to 40 °C

80%

IP 20

220 – 240 V / 50/60 Hz

RV 10 control V Ident. No. 10000524*

RV 10 control V-C Ident. No. 10000525*

RV 10 control FLEX Ident. No. 10000526*

RV 10 control V auto Ident. No. 10000395

RV 10 control V-C auto Ident. No. 10000396


RV 10 control FLEX auto Ident. No. 10000397



RV 10 control auto

The enhanced RV 10 control is now equipped with our fully automated speed control pump N 920. Additionally, the RV 10 control auto detects the required level of vacuum pressure by detecting the boiling point of the solvent. This feature has some significant benefits over a valve-regulated system.

Advantages:

- > Increased solvent recovery performance up to 100% 
- > Automatic boiling point detection
- > Speed controlled vacuum pump for precise vacuum level
- > Reduced noise level and wearing of pump components
- > Reduced process time and increased overall performance





Rotary Evaporators | Accessories



RV 10 / RV 8 accessories Glassware

Ident. No.

RV 10.1 3655300

Set of glassware, vertical

RV 10.10 3755400

Set of glassware, vertical, coated



RV 10.2 3755300

Set of glassware, diagonal

RV 10.20 3755500

Set of glassware, diagonal, coated



Condensers

RV 10.3 3741000

Vertical-intensive condenser, manifold

RV 10.30 3741100

Vertical-intensive condenser, manifold, coated



RV 10.4 3742000

Dry ice condenser

RV 10.40 3742100

Dry ice condenser, coated



RV 10.5 3743000

Vertical-condenser, reflux

RV 10.50 3743100

Vertical-condenser, reflux, coated



RV 10.6 3744000

Vertical-intensive condenser, reflux

RV 10.60 3744100

Vertical-intensive condenser, reflux, coated





Evaporation cylinders

RV 10.2022 3848200

Evaporation cylinder, NS 24/40, 500 ml

RV 10.2023 3848300

Evaporation cylinder, NS 24/40, 1500 ml



Bump trap

RV 10.2025 3848700

Foam brake, NS 24/40



Distilling spider with distilling sleeves

RV 10.600 3739400

Distilling spider, NS 29/32, 6 sleeves

RV 10.601 3739500

Distilling spider, NS 29/32, 12 sleeves

RV 10.602 3739600

Distilling spider, NS 29/32, 20 sleeves

RV 10.610 3919400

Distilling sleeve, 20 ml

IKA® +

All evaporation flasks are available as a special temperature coated version (for usage at max. 180°C in a heating bath)



Distilling spider with 5 flasks

RV 10.606 3740800

Distilling spider with 5 flasks, 50 ml

RV 10.607 3740900

Distilling spider with 5 flasks, 100 ml



Evaporation flasks

RV 10.2007 3845300

Evaporation flask, NS 24/40, 50 ml

RV 10.2008 3845400

Evaporation flask, NS 24/40, 100 ml

RV 10.2009 3845500

Evaporation flask, NS 24/40, 250 ml

RV 10.2010 3845600

Evaporation flask, NS 24/40, 500 ml

RV 10.2011 3845700

Evaporation flask, NS 24/40, 1000 ml

RV 10.2012 3845800

Evaporation flask, NS 24/40, 2000 ml

RV 10.2013 3845900

Evaporation flask, NS 24/40, 3000 ml





Rotary Evaporators | Accessories



Receiving flasks

RV 10.100 3742200

Receiving flask, KS 35/20, 100 ml

RV 10.101 3742300

Receiving flask, KS 35/20, 250 ml

RV 10.102 3742400

Receiving flask, KS 35/20, 500 ml

RV 10.103 3742500

Receiving flask, KS 35/20, 1000 ml

RV 10.104 3742600

Receiving flask, KS 35/20, 2000 ml

RV 10.105 3742700

Receiving flask, KS 35/20, 3000 ml

RV 10.200 3743200

Receiving flask, coated, KS 35/20, 100 ml

RV 10.201 3743300

Receiving flask, coated, KS 35/20, 250 ml

RV 10.202 3743400

Receiving flask, coated, KS 35/20, 500 ml

RV 10.203 3743500

Receiving flask, coated, KS 35/20, 1000 ml



Powder flasks

RV 10.300 3738200

Powder flask, NS 29/32, 500 ml

RV 10.301 3738300

Powder flask, NS 29/32, 1000 ml

RV 10.302 3738400

Powder flask, NS 29/32, 2000 ml



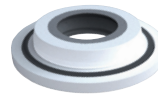
Vapor tubes, seals and other accessories

RV 10.70 3812200

Vapor tube, NS 29/32

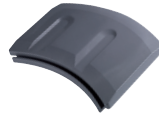
RV 10.74 3971700

Vapor tube, short, NS 29/32



RV 10.8001 3907000

Seal, PTFE, stainless steel



RV 10.3000 3859000

Extension plate for use with RV 10.500 foam break and 3 l evaporation flask



HB 10 heating bath accessories

Ident. No.

HB 10.1 3641800

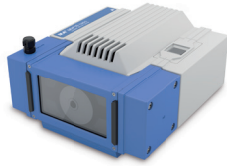
Shield for heating bath HB 10



HB 10.2 3641000

Protection cover for heating bath HB 10





Vacuum pumps

	Ident. No.
MVP 10 basic	3980000
For dry, oil-free applications in the low vacuum range	
VCV 1	20004850
Vacuum control valve manual	
VCV 2	20004893
Vacuum control valve digital	
VSS 1	20005194
Vacuum safety set	



N 920 KT.29.18 3919100
Membrane vacuum pump



SC 920 D400 4583600
Vacuum pump



LVS 105T-10 ef 4067800
Vacuum pump



RV 10 control accessories Vacuum pump valves

	Ident. No.
① RV 10.4001	3902600
Magnetic valve in-house vacuum	
② RV 10.4002	3880300
Magnetic valve laboratory vacuum	
③ RV 10.4003	3900200
Pump control including magnetic valve	



Water valves

	Ident. No.
④ RV 10.5001	3902700
Choke water valve	
⑤ RV 10.5002	3903800
Filter	
⑥ RV 10.5003	3907100
Pressure regulating valve	



RV 8 accessories

	Ident. No.
RV 8.1	4438500
Support Pole	
RV 8.2	25001342
Mechanical end stop for RV 8	



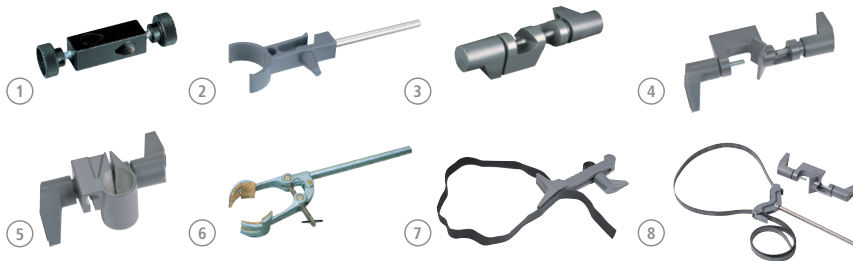


Mechanical / Electronic Accessories



14





Mechanical accessories

Fixing clamps

	Ident. No.		
1 H 44	2437700	5 R 271	2664000
Boss head clamp, clamping range \varnothing 10 – 11 mm		Boss head clamp, clamping range \varnothing 34 mm	
2 R 200	3372000	6 R 350	1752900
Clamp for T 10 basic and R 104		Universal clamp	
3 R 182	2657700	7 RH 3	3008600
Boss head clamp, clamping range \varnothing 6 – 16 mm		Strap clamp for stand \varnothing 8 – 16 mm	
4 R 270	2657800	8 RH 5	3159000
Boss head clamp, clamping range \varnothing 25 – 36 mm		Strap clamp for stand \varnothing 8 – 16 mm	



Electronic accessories

	Ident. No.		
9 ALMEMO 2490	4709300	10 DTM 12.10	3127800
The ALMEMO 2490 is a universal measuring device with 2 measuring channels. Especially adopted for the requirements of either simple temperature measuring purposes or as an accessory for our lab reactors to measure and display temperature and/or pH.		Data cable, L2.5 m, 9 pins (F)	
		11 PT 100.23	3122100
		Temperature sensor, stainless steel, \varnothing 3 mm, 250 mm length	
		12 PT 100.24	3122200
		Temperature sensor, stainless steel, glass-coated, \varnothing 8 mm, 250 mm length	
		13 PT 100.25	3122300
		Temperature sensor, stainless steel, \varnothing 6 mm, 255 mm length	

ALMEMO accessories

	Ident. No.
ALMEMO USB-cable	4709400
USB-cable	
PC 1.2	2616800
Adapter, 25 pins	
PH 225.1	3122600
Electrode temperature sensor	

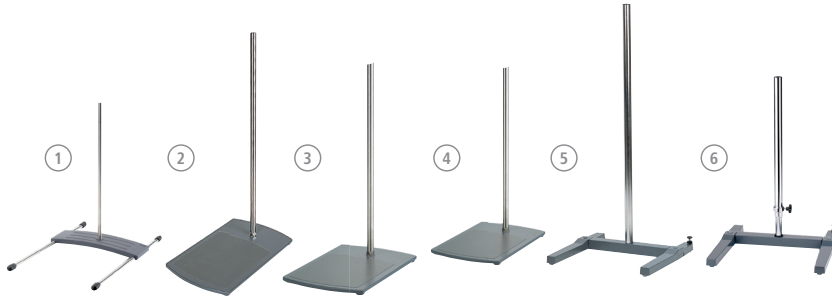
Lifts

14 LABLIFT m	4022400
Manual scissors lift, set-up plate dimensions 170 x 230 mm, stroke 70 – 300 mm, max. dynamic load 7 kg	





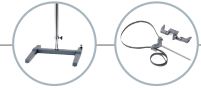
Mechanical Accessories



Stands

		Diameter of support rod	Dimensions (W x D)	Height
①	R 104 Stand Stand for T 10 basic, H 370 mm	10 mm	242 x 355 mm	370 mm
②	R 1825 Plate stand Plate stand, H 560 mm	16 mm	200 x 316 mm	560 mm
③	R 1826 Plate stand Plate stand, H 800 mm	16 mm	200 x 316 mm	800 mm
④	R 1827 Plate stand Plate stand, H 1000 mm	16 mm	200 x 316 mm	1000 mm
⑤	R 2722 H-Stand H-Stand, H 1010 mm	34 mm	460 x 420 mm	1010 mm
⑥	R 2723 Telescopic stand Telescopic stand, H 620 – 1010 mm	34 mm	460 x 420 mm	620 – 1010 mm
⑦	T 653 Telescopic stand Telescopic stand, H 1200 mm	48 mm	460 x 530 mm	1200 mm
⑧	R 474 Telescopic stand Telescopic stand, H 1200 mm	48 mm	460 x 530 mm	1200 mm
⑨	R 472 Floor stand Floor stand, H 2020 mm	–	80 x 80 mm	2020 mm
⑩	R 4765 Floor stand Floor stand, H 1014 – 1588 mm	–	764 x 870 mm	1500 mm
⑪	R 2850 Floor stand Floor stand, H 1900 mm	16 mm	980 x 875 mm	1921 mm





Max. load	Stroke	Ident. No.
0.7 kg	–	3386000
5 kg	–	3160000
5 kg	–	3160100
5 kg	–	3160200
10 kg	–	1412000
10 kg	390 mm	1412100
–	500 – 1000 mm	1608000
–	500 – 1000 mm	1643000
–	980 – 1860 mm	0738700
40 kg	465 mm	30000149
8.5 kg	1800 mm	20002900





Laboratory Reactors



IKA® lab reactors are the most unique systems when it comes to optimizing and reproducing chemical reaction, mixing, dispersing, and homogenization processes on a lab scale. The lab reactors can be individually customized to perform numerous tasks, including: production of cremes and lotions, the grinding and disintegrating of solids and fibers in liquids or polymers, etc. Single-walled or double-walled vessels made from borosilicate glass or stainless steel are available, each with or without bottom discharge valve.





reddot design award
winner 2013



German
Design Award
SPECIAL
MENTION

The modular, expandable laboratory reactor!

- > Wide range of applications
- > Manual adjustable safety circuit



LR 1000
basic



Digital display for
monitoring of speed
and temperature



C/T selector button for
choosing between the
counter or the timer
function



Adjustable safety circuit



Connections to attach
a cooling source to the
back of the unit





Laboratory Reactors



Technical data

Usable volume	400 – 1000 ml
Max. working temperature	120 °C
Nominal torque	3 Nm
Attainable vacuum	25 mbar
Max. viscosity	100,000 mPas
Speed range	10 – 150 rpm
Display	LED TFT
Heat output	1000 W
Heat control accuracy	± 1 K
Dimensions (W x D x H)	443 x 295 x 360 mm
Weight	16 kg
Permissible ambient temperature	5 – 40 °C
Permissible relative moisture	80%

LR 1000 basic | LR 1000 control

LR 1000 basic Package*

	Ident. No.
H 11 Main cable Euro plug	1091500
LR 1000 basic base	3600099
LR 1000.1 Reactor vessel	3602000
LR 1000.61 Sensor receptacle	4664400
PT 100.5 Temperature sensor	2506800
LR 1000 basic Package	8040100

LR 1000 control Package*

	Ident. No.
H 11 Main cable Euro plug	1091500
LR 1000 control base	3600099
LR 1000.3 Reactor vessel	25001955
LR 1000.61 Sensor receptacle	4664400
PT 100.5 Temperature sensor	2506800
USB cable USB A-Micro B 2.0	4335000
LR 1000 control Package	8040200

* PT 100.5 included in the delivery for measuring the external temperature





Possibility to connect
pH electrode



Integrated
weighing function



LR 1000
control



TFT
Display

Large, easy-to-read TFT display
for better image quality and
easy navigation



Torque trend measurement
indicates changes in viscosity
of the product



USB interface to control and
document rheological changes
and other parameters using
labworldsoft® software and
for updating the firmware



reddot design award
winner 2013



German
Design Award
SPECIAL
MENTION

Patented

Integrated
weighing function





Laboratory Reactors | Packages

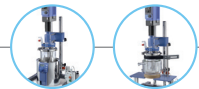
Modular design laboratory reactor for optimization and simulation of various chemical reactions as well as for mixing and homogenizing processes in a laboratory scale.

- > Suitable for vacuum operation
- > Seals in contact with the product are made of solvent- resp Temperature-resistant perfluoroelastomer (FFPM)
- > Infinitely adjustable speed



Technical data	
Min. volume (anchor stirrer)	500 ml
Min. volume (T 25 digital)	800 ml
Max. volume	2000 ml
Max. working temperature	230 °C
Attainable vacuum	25 mbar
Max. viscosity (EUROSTAR 200 control P4)	150,000 mPas
Speed range (EUROSTAR 200 control P4)	0/4 – 530 rpm
Max. torque at stirring shaft (EUROSTAR 200 control P4)	660 Ncm
Height of telescopic stand	620 – 1010 mm
Dimensions (W x D x H)	460 x 430 x 1240 mm
Metals in contact with medium	stainless steel (AISI 316L) FFPM borosilicate glass 3.3





LR-2.ST Package 1*

- Basic package with reactor cover (sealing material: FFPM) consisting of:
- > Stand system LR-2.ST
 - > LR-2.SI Safety disconnection
 - > EUROSTAR 200 control P4
 - > LR 2000.11 Anchor stirrer with flow borings
 - > LR 2.1 Single-walled reactor vessel
 - > Temperature sensor H 68.55

Ident. No. 9023600

LR-2.ST Package 2

- Basic package with reactor cover (sealing material: FFPM) consisting of:
- > Stand system LR-2.ST
 - > LR-2.SI Safety disconnection
 - > EUROSTAR 200 control P4
 - > LR 2000.11 Anchor stirrer with flow borings
 - > LR 2000.1 Double-walled reactor vessel with quick-action connectors

Ident. No. 9023700

LR-2.ST Package 3

- Basic package with reactor cover (sealing material: FFPM) consisting of:
- > Stand system LR-2.ST
 - > LR-2.SI Safety disconnection
 - > EUROSTAR 200 control P4
 - > LR 2000.11 Anchor stirrer with flow borings
 - > LR 2000.2 Double-walled reactor vessel with quick-action connectors and bottom discharge valve

Ident. No. 9023800

* HBR 4 Heating bath not included in the package





Laboratory Reactors | Accessories

LR 1000 accessories

Ident. No.



1 LR 1000.1 3602000
Reactor vessel, 1000 ml, FFKM Sealings, 4 connectors

2 LR 1000.3 25001955
Reactor vessel, 1000 ml, FFKM Sealings, 6 connectors

LR 1000.10 4663100
Anchor stirrer with PEEK scrapers

LR 1000.11 4663000
Anchor stirrer, stainless steel

LR 1000.20 4663200
Flow breaker / baffle, stainless steel



LR 1000.41 4664300
Shaft receptacle to install the dispersing elements
S 25 KV



LR 1000.61 4664400
Sensor receptacle to install the temperature sensors
PT 100.25 and PT 100.5

LR 1000.64 4663300
pH electrode

LR 1000.65 4663400
pH electrode receptacle

LR-2.ST accessories

Ident. No.

3 LR 2000.10 2508400
Anchor stirrer with PTFE scraper

4 LR 2000.11 2509500
Anchor stirrer, stainless steel

5 LR 2000.20 2508500
Flow breaker / baffle, stainless steel

6 LR 2.1 3070000
Reactor vessel, single-walled, 2000 ml

7 LR 2000.1 2508300
Reactor vessel, double-walled, 2000 ml

LR 2000.2 2509600
Reactor vessel, double-walled, 2000 ml
with bottom drain

8 LR 2000.40 2509200
Shaft receptacle to install the dispersing elements
S 25 KV

9 LR 2000.60 2509300
Sensor receptacle to install the temperature sensors
PT 100.25 and PT 100.5

LR 2000.65 3172600
pH measuring sensor receptacle

PH 225.1* 3122600
pH electrode with temperature sensor

DTM 12.15* 3128300
Adapter cable for pH electrode LR-2.ST

LR-2.SP 3326400
Splinter shield





LR-2.ST accessories

	Ident. No.
LT 5.20	2606700
Hose, insulated, stainless steel, Ø 10 mm, 150 mm, 2 pcs.	
LT 5.21	20000988
Hose, insulated, PTFE, Ø 13 mm, 150 mm, 2 pcs.	
LT 5.24	2578100
Hose adapter	
LT 5.25	20000878
Lock Coupling	
LT 5.26	20000879
Lock Adapter	
LT 5.27	20000880
Hose Adapter	

Common accessories

	Ident. No.
10 T 25 digital	3725000
Dispenser	
11 S 25 KV – 25 F	2404000
Dispensing element	
12 S 25 KV – 25 G	2466900
Dispensing element	
13 S 25 KV – 18 G	2348000
Dispensing element	
14 labworldsoft®	4720000
Laboratory software	





magic PLANT



The ideal small laboratory plant for perfect mixing and homogenizing of liquid to pasty products.

Effective dispersing and homogenizing. In connection with the IKA® magicLAB®, the magic PLANT is specially adapted to the requirements of batch plants.

Efficient but gentle mixing and drying of all free flowing solids, including products with different bulk densities and particle sizes.

Technical data	magic PLANT basic	magic PLANT inline	magic PLANT powder
Max. admissible temperature	150 °C	150 °C	150 °C
Working pressure range	-1 up to 2.5 bar	-1 up to 2.5 bar	-1 up to 2.5 bar
Useful volume	2 l	2 l	2 l
Stirring tool	anchor or propeller	propeller	spiral agitator
Speed range	0 – 350 rpm 0 – 2000 rpm	0 – 350 rpm 0 – 2000 rpm	0 – 350 rpm
	Ident. No. U105363	Ident. No. U107703	Ident. No. U107159





The most versatile laboratory reactor

The IKA® magic PLANT is an ideal laboratory scale process plant. This system is used for batch-wise mixing, homogenizing, emulsifying, in addition to forming sample suspensions for capacities of up to 2 liters. Whether it is involved with the manufacturing of liquids, pastes or powders - the magic PLANT delivers, enabling a seamless transition from product development to production.

magic
PLANT



Modular design



Higher viscosity
products processible

100,000 mPas



Tiltable vessel





Software

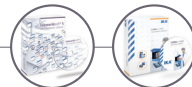


IKA®'s software labworldsoft® enables the networking of up to 64 laboratory devices which can be controlled simultaneously via one PC.

Not only IKA® products, but also other manufacturers' laboratory devices can be integrated using labworldsoft®.

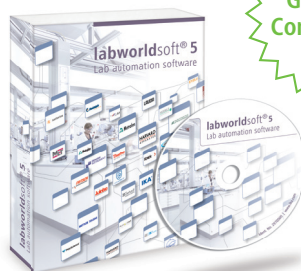
CalWin represents the newest generation of professional software for all IKA® calorimeters. It offers numerous functions for monitoring and evaluating results.





Advanced software with an innovative visual approach to lab automation

labworldsoft® is a multi-purpose software program for measuring, controlling and regulating laboratory devices. It can network up to 64 devices simultaneously via one PC, thus making the automation of your laboratory experiments and processes much more easy and efficient. It not only integrates IKA® laboratory devices but also supports devices from other manufacturers.



labworldsoft®

Hardware and software requirements

Pentium processor with at least 16 MB RAM, 8 MB free hard disc memory, VGA-Display: monochrome with at least 16 levels of gray or color, Windows 95/98/2000/NT/ME/XP/7 and com ports can be upgraded for special needs.

Ident. No. 4720000



C 6040 CalWin

Hardware and software requirements

Windows XP (SP2), Windows Vista, Windows 7, Windows 8 and at least one free USB or RS 232 (9 pin Sub-D (M)) serial interface. Processor with min. 1.6 GHz (single core-Processor); 2 GB RAM; 2.5 GB free hard-disc space; DVD-ROM-drive.

Ident. No. 4040500

IKA® +

Try it for yourself!
Get your free, fully functional,
30-day trial version Download at:
www.ika.com





Software | Accessories



Accessories

PCI 8.2 Plug-in card

To be integrated into the PC – used for connecting up to 8 devices simultaneously.

Ident. No. **8017500**

PC 4.1 RS 232 Server

Can control up to 4 lab units through the ethernet. The server supports 4 RS 232 ports with a 10/100 mbps ethernet interface by TCP/IP. The server can be set-up through the ethernet and works as a transparent serial COM-Port without restrictions of platform and distance.

Ident. No. **3192000**



① **Expert Key 100 eco** **20005486**
Data collection system for laboratories

② **Expert Key 100 pro** **20005485**
Data collection system for industrie

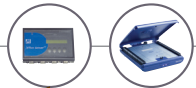
Multi Power Switch **20003454**
Adapter for Expert Key

RV 10 A 1 **20004315**
Adapter LEMO for Expert Key

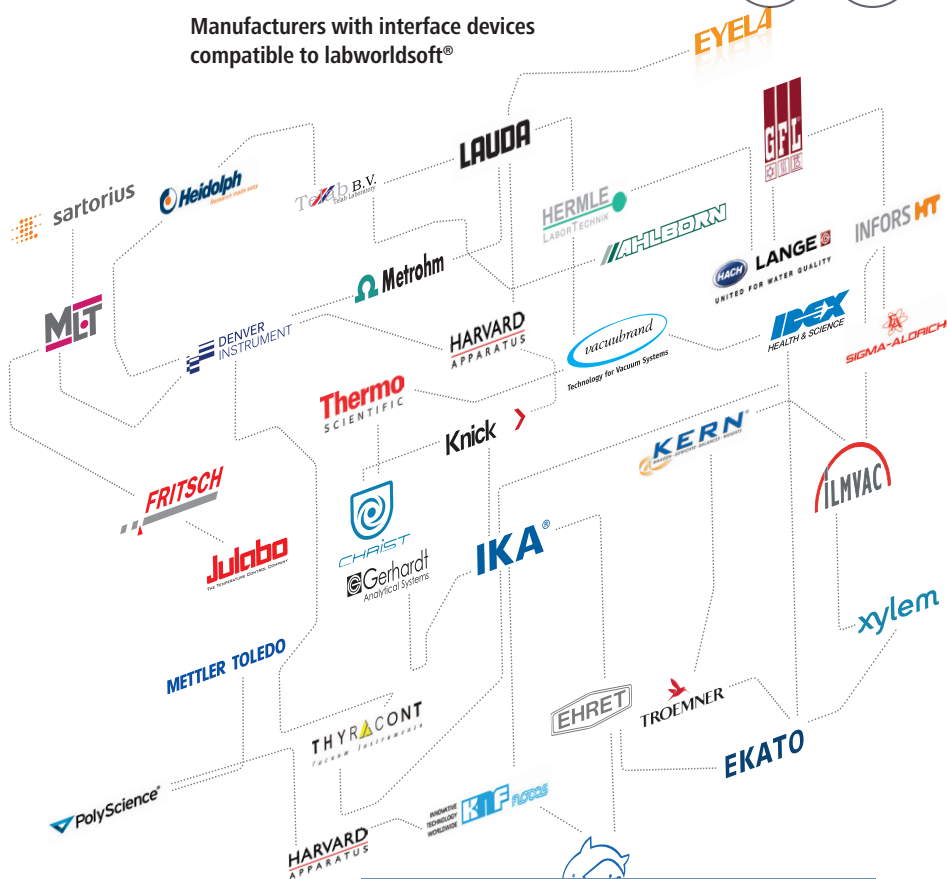
PT 1000 A 1 **20004316**
Adapter DIN 6 for Expert Key

PT 100.10 A 1 **20004317**
Adapter DIN 5 for Expert Key





Manufacturers with interface devices compatible to labworldsoft®



Cable		
	Length	Ident. No.
PC 1.1 Cable	3 m	2616700
PC 1.5 Cable	2.5 m	2756000
PC 2.1 Cable	5 m	2700700
PC 2.3 Cable	3 m	3036200
DTM 12.10 Cable	2.5 m	3127800
Adapter		
PC 1.2 Adapter	—	2616800
PC 1.4 Adapter	—	2755900
PC 2.2 Adapter	—	2753200
PC 5.1 Adapter	—	2621500

* For more information on cables and adapters, please visit our website: www.ika.com/products





Calorimeters



IKA® oxygen bomb calorimeters are the market leaders when it comes to determining the calorific values of liquid and solid samples. The selection of IKA® oxygen bomb calorimeters is optimally geared towards various different demands. Functionality, safety, and longevity were the main goals in the development of IKA®'s oxygen bomb calorimeters.





The world's smallest calorimeter ever!

- > Represents the smallest static jacket calorimeter in the world
- > combined modern technology with unique automation

C 1



The traditional heavy screw threaded bomb has been replaced by a light combustion chamber



Automatic oxygen filling, venting and flushing



Automatic ignition with fixed ignition wire as well as ignition energy determination for each experiment



Automatic water filling and draining





Calorimeters



Technical data

Maximum energy input	40,000 J
Resolution of the temperature sensor	0.0001
Power ON-time	100 %
Operating oxygen pressure	30 bar
Measuring modes / Measurements per hour	Static jacket (Regnault Pfaundler) 4
Start temperature settings	2 possible settings: 22 °C or 30 °C
RSD (using NIST benzoic acid 39)	Static jacket (Regnault Pfaundler) 0.15 %
Number of decomposition vessel per unit	up to 2

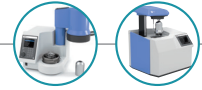
C 1

C 1 Ident. No. 3825000

C 1 Package 1/10 Ident. No. 10000567

Package details
on page 164





Software provides control chart view and correction calculation of globally used standards



RFID technology used for decomposition vessel identification



Easy bomb preparation due to new "turned around" crucible holder technology



C 6000 isoperibol	
40,000 J	
0.0001	
100 %	
30 bar	
Isoperibol (Regnault Pfaundler)	4
Dynamic	6
3 possible settings: 22 °C, 25 °C, 30 °C	
Isoperibol (Regnault Pfaundler)	0.05 %
Dynamic	0.15 %
up to 4	

Package 1/10 Ident. No. 10001048
 Package 1/12 Ident. No. 10001049
 Package 2/10 Ident. No. 8804700
 Package 2/12 Ident. No. 8804800

C 6000 global standards	
40,000 J	
0.0001	
100 %	
30 bar	
Adiabatic	5
Isoperibol (Regnault Pfaundler)	4
Dynamic	6
3 possible settings: 22 °C, 25 °C, 30 °C	
Adiabatic	0.05 %
Isoperibol (Regnault Pfaundler)	0.05 %
Dynamic	0.15 %
up to 4	

Package 1/10 Ident. No. 10001046
 Package 1/12 Ident. No. 10001047
 Package 2/10 Ident. No. 8804300
 Package 2/12 Ident. No. 8804400





Calorimeters



	C 200	C 2000
Technical data		
Maximum energy input	40,000 J	40,000 J
Resolution of the temperature sensor	0.0001	0.0001
Power ON-time	continuous operation	continuous operation
Operating oxygen pressure	–	30 bar
Measuring modes / Measurements per hour	Isoperibol 3 Dynamic 5 Manual (Isoperibol) 3 Time-controlled 4	Isoperibol 3 Dynamic 6
Start temperature settings	18 – 25 °C	2 possible settings: 25 °C or 30 °C
RSD (using NIST benzoic acid 39j)	Isoperibol 0.1 % Dynamic 0.1 % Manual (Isoperibol) 0.1 % Time-controlled 0.1 %	Isoperibol 0.05 % Dynamic 0.1 %
Number of decomposition vessel per unit	up to 4	up to 4
	C 200 Ident. No. 8802500 C 200 h Ident. No. 8803700	basic Version 1 Ident. No. 8801800 basic Version 2 Ident. No. 8801900

Package details
on page 165





C 5000

40,000 J

0.0001

continuous operation

30 bar

Adiabatic	4
Isoperibol	3
Dynamic	6

Package 1: 22 °C / Package 2: 25 °C

Adiabatic	0.05 %
Isoperibol	0.05 %
Dynamic	0.1 %

up to 4

Package 1/10 Ident. No. 8803000
 Package 1/12 Ident. No. 8803300
 Package 2/10 Ident. No. 8803200
 Package 2/12 Ident. No. 8803400

C 7000

30,000 J

0.0001

continuous operation

30 bar

double dry

12 – 30 °C (cooling water)

double dry	0.2 % – 0.5 %
------------	---------------

up to 4

basic set 1 Ident. No. 8800900
 basic set 2 Ident. No. 8801400





Calorimeters | Accessories & consumables

IKA®+

The halogen resistant decomposition vessels C 5012, C 6012 and C 7012 are equipped with a catalytically active surface, which enhances the on-going reactions during the combustion. As a result, higher recovery rates for halogens and sulfur are achieved.

C 1 Accessories and consumables

	Ident. No.
C 1.1012	4500700
Organizer	
C 1.30	4500900
Venting station	
C 1.10	4500300
Combustion chamber	
C 1.101	4502200
Set of spare parts, approx. 1000 experiments	

C 200 accessories

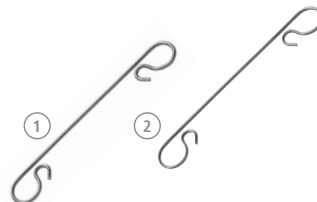
	Ident. No.
C 248	3520000
Oxygen station	
C 200.1	3548900
Measuring cup, 2000 ml	
C 200.2	4028800
Conversion kit for C 5012	

C 6000 Accessories and consumables

	Ident. No.
C 6010	3770000
Decomposition vessel, standard	
C 6012	4504000
Decomposition vessel, halogen resistant	
C 6030	4504100
Venting station	
C 60.1012	4504200
Organizer	
C 6000.10	4504300
Set of spare parts, approx. 1000 experiments	
C 6000.12	4504400
Set of spare parts, approx. 1000 experiments	

C 1 and C 6000 consumables

	Ident. No.
C 1.50	4500600
Dot matrix printer	
① C 1.103	4579300
Ignition wire, standard, Kantal, 5 pcs.	
② C 1.123	4500200
Ignition wire, platinum, 2 pcs.	





Accessories for all Calorimeters

	Ident. No.
C 27	4579700
Calorimeter preparation set	
C 29	1004944
Pressure gauge, oxygen	
C 21	1605300
Pelleting press	
C 5010.8	4579800
Crucible holder, small	
C 5010.5	3055900
Crucible holder, big	

C 200, C 2000, C 5000 accessories

	Ident. No.
C 5010	7114000
Decomposition vessel, standard	
C 5012	7215000
Decomposition vessel, halogen resistant	
C 5030	7198000
Venting station	
C 5010.4	3016900
Attachment for combustible crucible C 14	
C 26	8804000
Prep stand	

C 2000, C 5000, C 6000 accessories

	Ident. No.
C 5020	7145000
Sample rack	

C 1, C 2000, C 6000 accessories

	Ident. No.
C 25	3197200
Pressure regulating valve	

C 7000 accessories

	Ident. No.
C 7000	3008000
Measurement cell	
C 7010	3015000
Decomposition vessel, standard	
C 7012	3017000
Decomposition vessel, halogen resistant	
C 7002	7011000
Cooling system	
C 48	1560000
Oxygen station	
C 7030	3013300
Venting station	
C 7010.8	7095000
Venting handle	
C 5010.4	3016900
Attachment for combustible crucible C 14	
C 5010.5	3055900
Crucible holder, big	





Calorimeters | Accessories & consumables

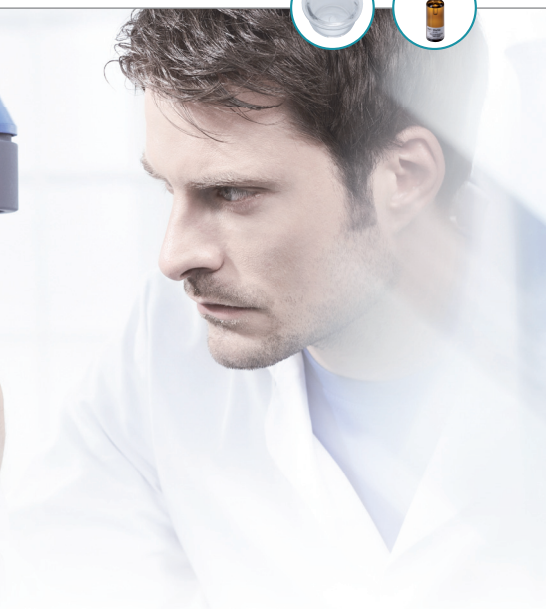


Consumables for all calorimeters

	Ident. No.
③ C 1.104	20003598
Water bath additive, 30 ml	
④ C 710.4	1483700
Cotton thread, cut to length, 500 pcs.	
C 710.8	4579900
Cotton thread, cut to length, thick, 500 pcs.	
⑤ C 4	1695500
Quartz dish	
⑥ C 5	1749500
Set of VA combustion crucibles, 25 pcs.	
⑦ C 6	0355100
Quartz dish, big	
⑧ C 710.2	1483500
Set of VA combustion crucibles, 25 pcs.	
⑨ C 9	0749900
Gelatine capsules, 100 pcs.	
⑩ C 10	0750000
Acetobutyrate capsules, 100 pcs.	

C 12	2201400
Combustion bags, 40 x 35 mm, 100 pcs	
C 12 A	2201500
Combustion bags, 70 x 40 mm, 100 pcs	
C 15	3131100
Paraffin strips, 45 x 3 mm, 600 pcs.	
C 16	3801100
Parafilm, 1000 x 50 mm	
⑪ C 17	3801200
Paraffin, liquid, 30 ml	
⑫ C 43	0750600
Benzoic acid, NIST 39j, 30 g	
⑬ C 723	3243000
Benzoic acid, blister package, 0.5 g, 50 pcs.	
C 723 Big pack	3717400
Benzoic acid, blister package, 0.5 g, 450 pcs.	
⑭ AOD 1.11	3044000
Control standard, 50 ml, for Sulfur and chlorine	
⑮ AOD 1.12	3080200
Control standard, 50 ml, for fluorine and bromine	





C 200, C 2000, C 5000 and C 7000 consumables

	Ident. No.
C 5010.3	7122800
Ignition wire, spare, 5 pcs.	
C 5012.3	2994900
Ignition wire, platinum, 2 pcs.	
C 14	7224500
Combustible crucible, 100 pcs.	

Calorimeter instructions Instruction on the IKA® Calorimeter system

Decomposition system

	Ident. No.
AOD 1	8801300
Decomposition system	

Decomposition accessories

	Ident. No.
AOD 1.1	3303000
Decomposition vessel	
AOD 1.2	3348000
External ignition unit	
AOD 1.3	3308000
Protection device	
AOD 1.13	3348100
Remote ignition head	



C 6040 CalWin

Hardware and software requirements

Windows XP (SP2), Windows Vista, Windows 7, Windows 8 and at least one free USB or RS 232 (9 pin Sub-D (M)) serial interface. Processor with min. 1.6 GHz (single core-Processor); 2 GB RAM; 2.5 GB free hard-disc space; DVD-ROM-drive.

Ident. No. 4040500





IKA® Packages

Package name / Package description	Ident No.
C-MAG HS 7 Package	9015900
C-MAG HS 7	3581200
ETS-D5 Electronic contact thermometer	3378000
H 38 Holding rod	3547700
H 44 Boss head clamp	2437700
H 16 V Support rod	1545100



Package name / Package description	Ident No.
RW 28 digital Package	9023200
RW 28 digital (drive)	5040000
R 2723 Telescopic stand	1412100
R 1385 Propeller stirrer	0477700
R 271 Boss head clamp	2664000
RW 47 digital Package	9023300
RW 47 digital (drive)	4050000
R 2302 Propeller stirrer	0739000
R 474 Telescopic stand	1643000



**Magnetic stirrers
with heating**
page 10



**Mechanical
Overhead stirrers**
page 34





Package name / Package description	Ident No.
------------------------------------	-----------

KS 130 basic Package	9019000
-----------------------------	---------

KS 130 basic	2980000
--------------	---------

AS 130.3 Dish attachment	3120000
--------------------------	---------

STICKMAX universal adhesive mat	3920000
---------------------------------	---------

KS 130 control NOL Package	9025500
-----------------------------------	---------

KS 130 control NOL	4278200
--------------------	---------

AS 130.3 Dish attachment	3120000
--------------------------	---------

STICKMAX universal adhesive mat	3920000
---------------------------------	---------

KS 260 basic Package	9019200
-----------------------------	---------

KS 260 basic	2980200
--------------	---------

AS 260.3 Dish attachment	3120600
--------------------------	---------

2 x STICKMAX universal adhesive mat	3920000
-------------------------------------	---------

KS 260 control NOL Package	9025600
-----------------------------------	---------

KS 260 control NOL	4278400
--------------------	---------

AS 260.3 Dish attachment	3120600
--------------------------	---------

2 x STICKMAX universal adhesive mat	3920000
-------------------------------------	---------

Package name / Package description	Ident No.
------------------------------------	-----------

T 10 standard PCR kit	4095500
------------------------------	---------

S 10 D - 7 G - KS - 65 Dispersing tool	3433225
--	---------

S 10 D - 7 G - KS - 110 Dispersing tool	3433325
---	---------

Disposable Generator 7 x 65 mm (12 pcs.)	3380612
--	---------

R 200 clamp	3372000
-------------	---------

T 65 basic Package	9023400
---------------------------	---------

T 65 basic	4023500
------------	---------

S 65 KG - HH - G 65 G Dispersing tool	8005500
---------------------------------------	---------

T 653 Telescopic stand	1608000
------------------------	---------

T 65 digital Package	9023500
-----------------------------	---------

T 65 digital	4234500
--------------	---------

S 65 KG - HH - G 65 G Dispersing tool	8005500
---------------------------------------	---------

T 653 Telescopic stand	1608000
------------------------	---------



T-series ULTRA-TURRAX®
Dispersers
page 68

Shakers
page 50





IKA® Packages

①

Package name / Package description	Ident. No.
Open heating bath circulators	
ICC basic eco 8*	8034900
ICC control eco 8**	8035300
BS.ICC	20003077
IB eco 8 Bath vessel, plastic	4248100
ICC basic eco 18*	8035000
ICC control eco 18**	8035400
BL.ICC	20003078
IB eco 18 Bath vessel, plastic	4248200
ICC basic pro 9*	8035100
ICC control pro 9**	8035500
BS.ICC	20003077
IB pro 9 Bath vessel, stainless steel	4248500
ICC basic pro 12*	10000414
ICC control pro 12**	10000415
BL.ICC	20003078
IB pro 12 Bath vessel, stainless steel	4248600
ICC basic pro 20*	8035200
ICC control pro 20**	8035600
CL.ICC	4471600
IB pro 20 Bath vessel, stainless steel	4577500

* ICC basic included in delivery

** ICC control included in delivery

③

Package name / Package description	Ident. No.
Open heating bath circulators with cover	
IC basic eco 18 c*	8036600
IC control eco 18 c**	8037000
IB eco 18 Bath vessel, plastic	4248200
CL.IC Cover	4471800
IC basic pro 12 c*	8039900
IC control pro 12 c**	8040000
IB pro 12 Bath vessel, stainless steel	4577500
CM.IC Cover	4577600
IC basic pro 20 c*	8036800
IC control pro 20 c**	8037200
IB pro 20 Bath vessel, stainless steel	4248600
CL.IC Cover	4471800

* IC basic included in delivery

** IC control included in delivery. PT 100.30 Temperature Sensor, CC 1 Cooling Coil, and BS.IC Bridge are all included in the delivery for both IC basic | control Packages with cover

Thermostats
page 110



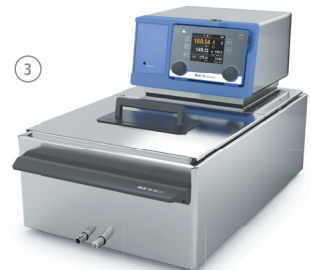


Package name / Package description	Ident. No.
Open heating bath circulators with cover	
ICC basic eco 8 c*	8035700
ICC control eco 8 c**	8036100
BS.ICC	20003077
CS.ICC	4471500
IB eco 8 Bath vessel, plastic	4248100
ICC basic eco 18 c*	8035800
ICC control eco 18 c**	8036200
BL.ICC	20003078
CL.ICC	4471600
IB eco 18 Bath vessel, plastic	4248200
ICC basic pro 9 c*	8035900
ICC control pro 9 c**	8036300
BS.ICC	20003077
CS.ICC	4471500
IB pro 9 Bath vessel, stainless steel	4248500
ICC basic pro 12 c*	10000416
ICC control pro 12 c**	10000417
BL.ICC	20003078
CM.ICC	25000290
IB pro 12 Bath vessel, stainless steel	4248600
ICC basic pro 20 c*	8036000
ICC control pro 20 c**	8036400
BL.ICC	20003078
CL.ICC	4471600
IB pro 20 Bath vessel, stainless steel	4577500

* ICC basic included in delivery

** ICC control included in delivery

PT 100.30 Temperature sensor, CC2 Cooling Coil, and PCS.ICC Pump connection are all included in the delivery for ICC control Packages with cover



Thermostats
page 110





IKA® Packages

Package name / Package description	Ident No.
RV 8 V	10000387
RV 8	40570A1
HB 10 heating bath	40680A1
RV 10.1 Set of glassware, vertical	3655300
RV 10.73 Vapor tube, NS 24/40	3829400
RV 8 V-C	10000392
RV 8	40570A1
HB 10 heating bath	40680A1
RV 10.10 Set of glassware, vertical, coated	3755400
RV 10.73 Vapor tube, NS 24/40	3829400
RV 8 FLEX	10000393
RV 8	40570A1
HB 10 heating bath, incl. Woulff bottle	40680A1
RV 05.10 Balljoint clamp	0736600
RV 10.89 Clamp, NS 24	3756200
RV 10.73 Vapor tube, NS 24/40	3829400
RV 10 digital V	80414A0
RV 10 digital	35500A1
HB 10 heating bath	40680A1
RV 10.1 Set of glassware, vertical	3655300
RV 10.73 Vapor tube, NS 24/40	3829400
RV 10 digital V-C	80416A0
RV 10 digital	35500A1
HB 10 heating bath	40680A1
RV 10.10 Set of glassware, vertical, coated	3755400
RV 10.73 Vapor tube, NS 24/40	3829400
RV 10 digital FLEX	80412A0
RV 10 digital	35500A1
HB 10 heating bath, incl. Woulff bottle	40681A0
RV 05.10 Balljoint clamp	0736600
RV 10.89 Clamp, NS 24	3756200
RV 10.73 Vapor tube, NS 24/40	3829400



RV 8



RV 10 digital

Rotary Evaporators
page 122





RV 10 control auto

Rotary Evaporators
page 124



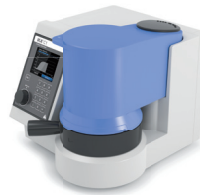
Package name / Package description	Ident No.
RV 10 control V	10000524
RV 10 control	35600A1
HB 10 heating bath	40680A1
RV 10.1 Set of glassware, vertical	3655300
RV 10.73 Vapor tube, NS 24/40	3829400
RV 10.4002 Magnetic valve laboratory vacuum	3880300
RV 10 control V-C	10000525
RV 10 control	35600A1
HB 10 heating bath	40680A1
RV 10.10 Set of glassware, vertical, coated	3755400
RV 10.73 Vapor tube, NS 24/40	3829400
RV 10.4002 Magnetic valve laboratory vacuum	3880300
RV 10 control FLEX	10000526
RV 10 control	35600A1
HB 10 heating bath, incl. Woulff bottle	40680A1
RV 05.10 Balljoint clamp	0736600
RV 10.89 Clamp, NS 24	3756200
RV 10.73 Vapor tube, NS 24/40	3829400
RV 10.4002 Magnetic valve laboratory vacuum	3880300
RV 10 control V auto	10000395
RV 10 control	35600A1
Pump with analog connection	4406000
HB 10 heating bath	40680A1
RV 10.1 Set of glassware, vertical	3655300
RV 10.73 Vapor tube, NS 24/40	3829400
RV 10 control V-C auto	10000396
RV 10 control	35600A1
Pump with analog connection	4406000
HB 10 heating bath	40680A1
RV 10.10 Set of glassware, vertical, coated	3755400
RV 10.73 Vapor tube, NS 24/40	3829400
RV 10 control FLEX auto	10000397
RV 10 control	35600A1
Pump with analog connection	4406000
HB 10 heating bath, incl. Woulff bottle	40680A1
RV 05.10 Balljoint clamp	0736600
RV 10.89 Clamp, NS 24	3756200
RV 10.73 Vapor tube, NS 24/40	3829400





IKA® Packages

Package name / Package description	Ident. No.
C 1 Package 1/10	10001045
C 1	3825000
RC 2 basic refrigerated circulator	4171000
C 6000 global standards Package 1/10	10001046
C 6000 global standards	3780000
C 6010 Decomposition vessel, standard	3770000
RC 2 basic refrigerated circulator	4171000
C 6000 global standards Package 1/12	10001047
C 6000 global standards	3780000
C 6012 Decomposition vessel, halogen resistant	4504000
RC 2 basic refrigerated circulator	4171000
C 6000 global standards Package 2/10	8804300
C 6000 global standards	3780000
C 6010 Decomposition vessel, standard	3770000
C 6000 global standards Package 2/12	8804400
C 6000 global standards	3780000
C 6012 Decomposition vessel, halogen resistant	4504000
C 6000 isoperibol Package 1/10	10001048
C 6000 isoperibol	4025000
C 6010 Decomposition vessel, standard	3770000
RC 2 basic refrigerated circulator	4171000
C 6000 isoperibol Package 1/12	10001049
C 6000 isoperibol	4025000
C 6012 Decomposition vessel, halogen resistant	4504000
RC 2 basic refrigerated circulator	4171000
C 6000 isoperibol Package 2/10	8804700
C 6000 isoperibol	4025000
C 6010 Decomposition vessel, standard	3770000
C 6000 isoperibol Package 2/12	8804800
C 6000 isoperibol	4025000
C 6012 Decomposition vessel, halogen resistant	4504000



C 1



C 6000

Calorimeters
page 150





C 200



C 2000



C 5000

Package name / Package description	Ident. No.
C 200 h	8803700
C 200	3385000
C 200.2 Conversion set for C 5012	4028800
C 248 Oxygen station	3520000
C 5012 Decomposition vessel, halogen resistant	7215000
C 2000 basic Version 1	8801800
C 2000 basic	3180000
C 5010 Decomposition vessel, standard	7114000
C 2000 basic Version 2	8801900
C 2000 basic	3180000
C 5012 Decomposition vessel, halogen resistant	7215000
C 5000 control Package 1/10	8803000
C 5000 control	3048000
C 5001 Cooling system	7066000
C 5003 Measurement cell	3595000
C 5010 Decomposition vessel, standard	7114000
C 5000 control Package 1/12	8803300
C 5000 control	3048000
C 5001 Cooling system	7066000
C 5003 Measurement cell	3595000
C 5012 Decomposition vessel, halogen resistant	7215000
C 5000 control Package 2/10	8803200
C 5000 control	3048000
C 5003 Measurement cell	3595000
C 5004 Heat exchanger	7216500
C 5010 Decomposition vessel, standard	7114000
C 5000 control Package 2/12	8803400
C 5000 control	3048000
C 5003 Measurement cell	3595000
C 5004 Heat exchanger	7216500
C 5012 Decomposition vessel, halogen resistant	7215000





IKA® offers more



IKA® Online

Get up-to-date information about products, new innovations, videos, photos, press releases and much more

www.ika.com
Visit Now!

Worldwide service network – direct contact in your region

Our dedicated team of engineers provides comprehensive worldwide technical service. Please feel free to contact IKA® directly or your dealer in case of any service questions.

For spare parts IKA® guarantees 10 years of availability. In the event of an equipment malfunction or technical questions regarding devices, maintenance and spare parts, please call us at **+82 2 2136 6800** or send an email to sales-lab@ika.kr





IKA®
Online

Application
Support

Worldwide
service
network

Customizing
Center

Customizing Center



It is important that IKA® products work for your application. We are introducing a new program: product solutions tailored to your needs.

Should you not find the appropriate device in our standard product range, please send us your requested specifications through the online form. Our team will determine its feasibility and offer a solution to you.

Please visit www.ika.com/customizingcenter to review already implemented product modifications.

IKA® Application Support

Our Application Center spans 400 sqm and offers modern facilities for presenting and testing lab devices and processes. This brings us even closer to our customers and improves our service. Here, prospective buyers and customers can test processes that involve stirring, shaking, dispersing, grinding, heating, analyzing and distilling.

Call us at **+82 2 2136 6800**
or send an email to sales-lab@ika.kr
or visit our website at
www.ika.com/applicationsupport





Subject to technical changes

IKA®+

Ordering made easy

For more information about our products and to place your order, please visit:

www.ika.com



IKA® Product Overview EN



[IKAworlwide](#) | [#lookattheblue](#)

IKA® Worldwide

Germany

IKA® Werke GmbH & Co. KG
Phone: +49 7633 831-0
sales@ika.de

USA

IKA®-Works, Inc.
Phone: +1 910 452-7059
sales@ika.net

China

IKA® Works Guangzhou
Phone: +86 20 8222 1771
info@ika.cn

India

IKA® India Private Limited
Phone: +91 80 2625 3900
info@ika.in

Japan

IKA® Japan K.K.
Phone: +81 6 6730 6781
info_japan@ika.ne.jp

Brasil

IKA® do Brasil
Phone: +55 19 3772-9600
info@ika.net.br

Malaysia

IKA® Works (Asia) Sdn Bhd
Phone: +60 3 6099-5666
sales.lab@ika.my

IKA® Korea Ltd.

S17-2, 8F Garden Five tool Bld,
Moon jeoung-dong,
Song pa-gu, Seoul,
Korea

Tel. +82 2 2136 6800
Fax +82 2 2136 6810

info@ika.kr
www.ika.com

IKA® German technology

201505_POV 2015_A5_Brochure_EN_IWC_wop

www.ika.com